

# MARVELL SIX ARRIVAL

SE-1, 11 JUL 2024 to 08 AUG 2024

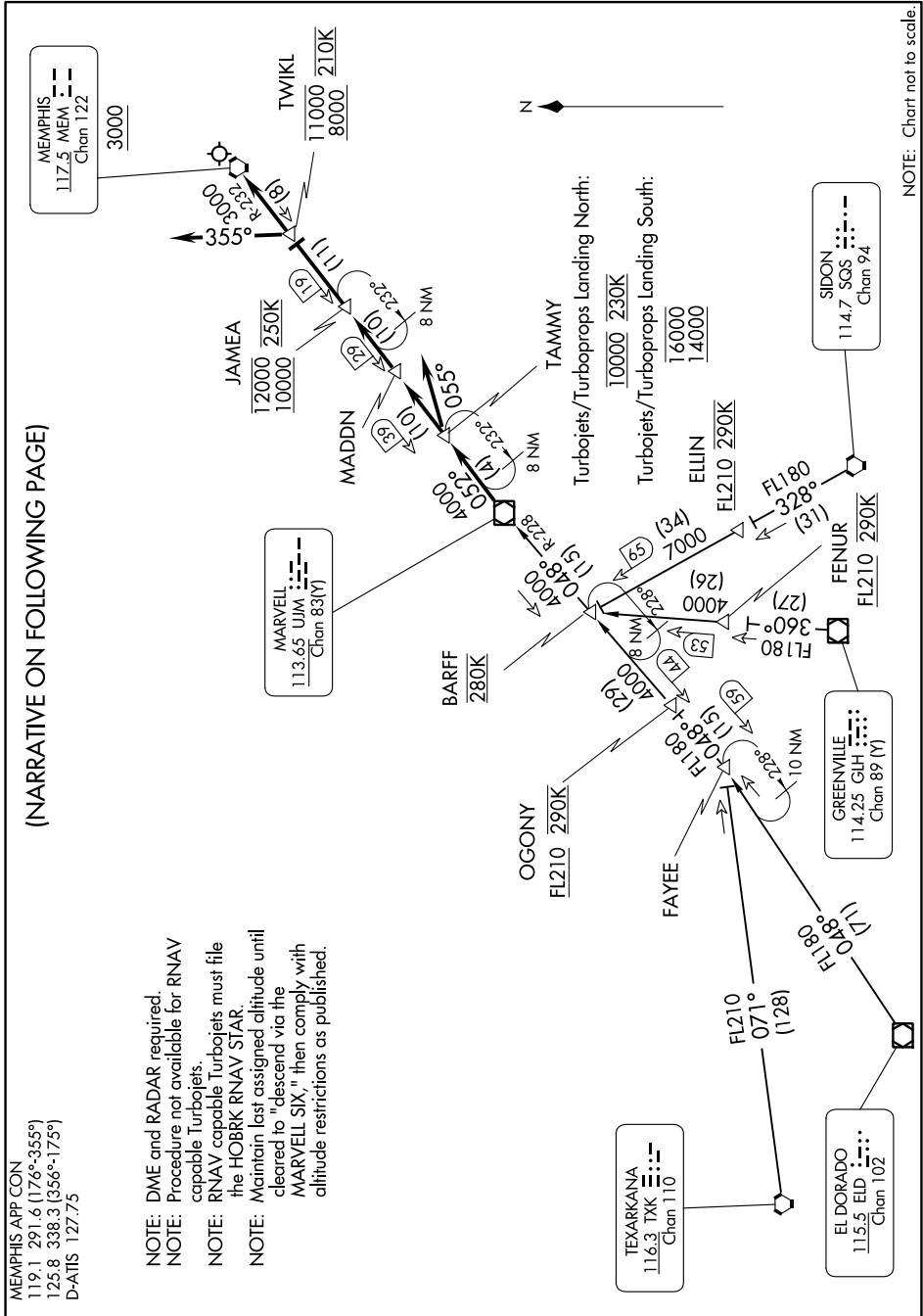
(NARRATIVE ON FOLLOWING PAGE)

MEMPHIS APP CON  
119.1 291.6 (176°-355°)  
125.8 338.3 (356°-175°)  
D-AIIS 127.75

- NOTE: DME and RADAR required.
- NOTE: Procedure not available for RNAV capable Turbojets.
- NOTE: RNAV capable Turbojets must file the HOBKR RNAV STAR.
- NOTE: Maintain last assigned altitude until cleared to "descend via the MARVELL SIX," then comply with altitude restrictions as published.

# MARVELL SIX ARRIVAL

10NOV16



NOTE: Chart not to scale

SE-1, 11 JUL 2024 to 08 AUG 2024