

LOC I-MEM	APP CRS	Rwy Idg	<b>8946</b>
<b>109.5</b>	<b>093°</b>	TDZE	<b>259</b>
		Apt Elev	<b>341</b>

# ILS or LOC RWY 9

MEMPHIS INTL (MEM)

**▼** For inop ALS, increase S-ILS 9 Cat E visibility to RVR 4000 and S-LOC 9 Cat E visibility to 1¾ SM.



**MISSED APPROACH:** Climb to 1000 then climbing right turn to 5000 on MEM R-151 to KEEZE INT/MEM 10.4 DME and hold, continue climb-in-hold to 5000.

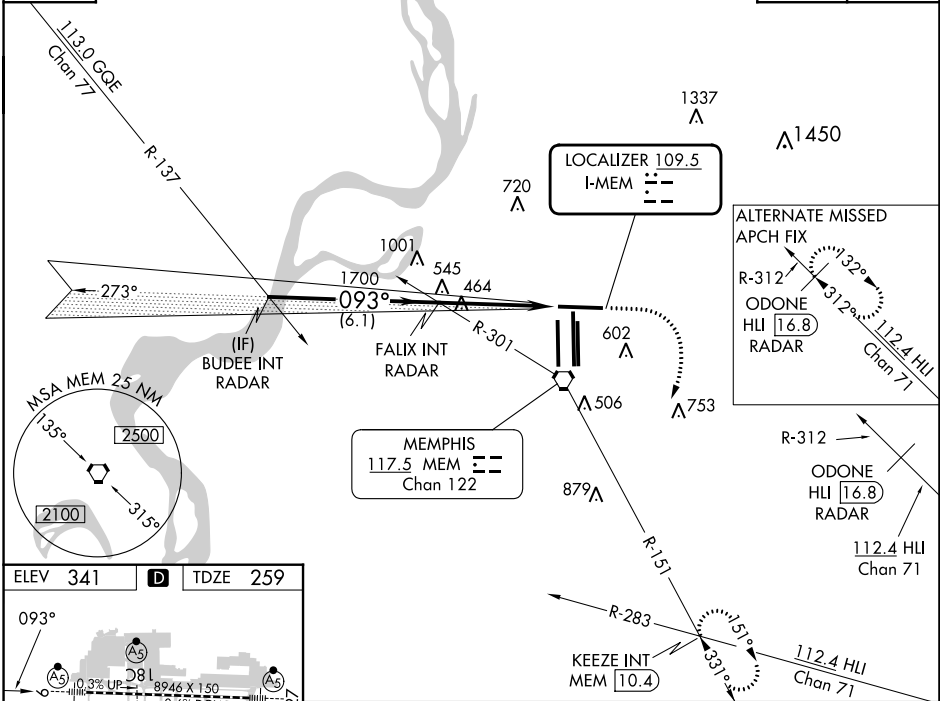
MEMPHIS APP CON		MEMPHIS TOWER		GND CON	
<b>119.1 291.6</b>	(176°-355°)	(Rwy 9-27)	<b>118.3 257.8</b>	(Rwy 9-27)	<b>121.0 379.2</b>
<b>125.8 338.3</b>	(356°-175°)	(Rwys 18C-36C, 18L-36R)	<b>119.7 257.8</b>	(Rwys 18C-36C, 18L-36R)	<b>121.9 379.2</b>
		(Rwy 18R-36L)	<b>128.425 257.8</b>	(Rwy 18R-36L)	<b>121.65 379.2</b>

D-ATIS  
**127.75**

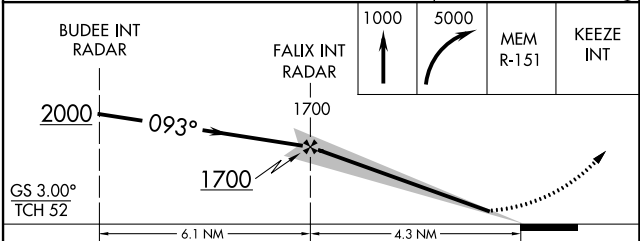
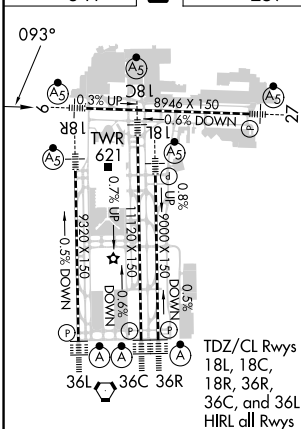
## RADAR REQUIRED

CLNC DEL  
**125.2**

CPDLC



ELEV	<b>341</b>	<b>D</b>	TDZE	<b>259</b>
------	------------	----------	------	------------



BUDEE INT RADAR	FALIX INT RADAR	1000	5000	MEM R-151	KEEZE INT
GS 3.00°		TCH 52			
CATEGORY	A	B	C	D	E
S-ILS 9	466/24 207 (200-½)				
S-LOC 9	720/24	461 (400-½)	720/50	461 (400-1)	720/60 461 (400-1¼)
<input checked="" type="checkbox"/> CIRCLING	940-1	599 (600-1)	940-1½ 599 (600-1½)	1020-2¼ 679 (700-2¼)	1140-2¾ 799 (800-2¾)

FAF to MAP 4.3 NM					
Knots	60	90	120	150	180
Min:Sec	4:18	2:52	2:09	1:43	1:26

SE-1, 03 OCT 2024 to 31 OCT 2024

SE-1, 03 OCT 2024 to 31 OCT 2024