

# GRRIZ FIVE DEPARTURE (RNAV)

MEMPHIS, TENNESSEE

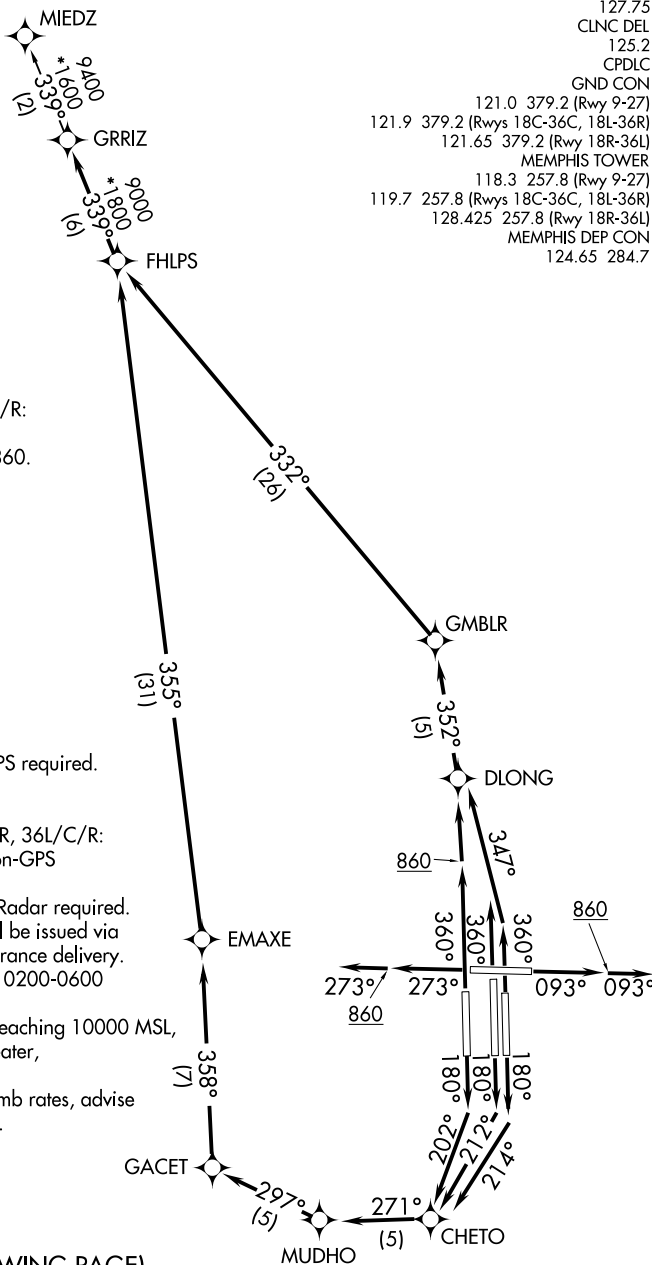
**TOP ALTITUDE:  
5000**

D-ATIS 127.75  
 CLNC DEL 125.2  
 CPDLC  
 GND CON 121.0 379.2 (Rwy 9-27)  
 121.9 379.2 (Rwys 18C-36C, 18L-36R)  
 121.65 379.2 (Rwy 18R-36L)  
 MEMPHIS TOWER 118.3 257.8 (Rwy 9-27)  
 119.7 257.8 (Rwys 18C-36C, 18L-36R)  
 128.425 257.8 (Rwy 18R-36L)  
 MEMPHIS DEP CON 124.65 284.7

**TAKEOFF MINIMUMS:**

Rwys 9, 18L/C/R, 27, 36L/C/R:  
 Standard with minimum  
 climb of 500' per NM to 860.

- NOTE: DME/DME/IRU or GPS required.
- NOTE: RNAV 1.
- NOTE: Turbojets only.
- NOTE: Takeoff Rwys 18L/C/R, 36L/C/R:  
Radar required for non-GPS  
equipped aircraft.
- NOTE: Takeoff Rwys 9, 27: Radar required.
- NOTE: Transponder code will be issued via  
PDC or Memphis clearance delivery.
- NOTE: Procedure authorized 0200-0600  
local only.
- NOTE: Accelerate to 250K, reaching 10000 MSL,  
maintain 250K or greater,  
if unable advise ATC.
- NOTE: If unable to accept climb rates, advise  
ATC on initial contact.



(NARRATIVE ON FOLLOWING PAGE)

NOTE: Chart not to scale.

# GRRIZ FIVE DEPARTURE (RNAV)

(GRRIZ5.GRRIZ) 31DEC20

MEMPHIS, TENNESSEE  
MEMPHIS INTL (M.E.M)

SE-1, 03 OCT 2024 to 31 OCT 2024

SE-1, 03 OCT 2024 to 31 OCT 2024