

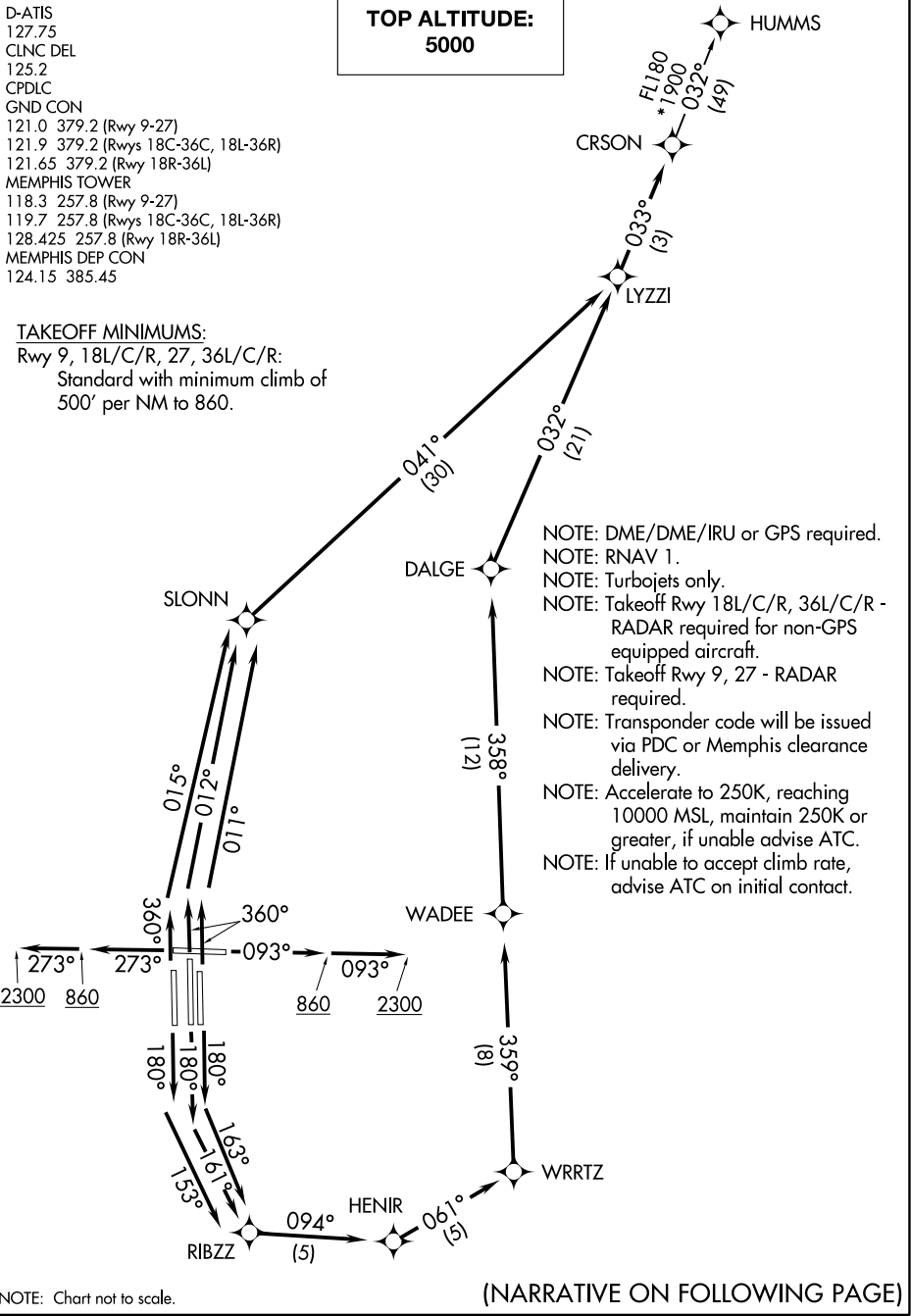
# CRSON SEVEN DEPARTURE (RNAV)

D-ATIS  
127.75  
CLNC DEL  
125.2  
CPDLC  
GND CON  
121.0 379.2 (Rwy 9-27)  
121.9 379.2 (Rwys 18C-36C, 18L-36R)  
121.65 379.2 (Rwy 18R-36L)  
MEMPHIS TOWER  
118.3 257.8 (Rwy 9-27)  
119.7 257.8 (Rwys 18C-36C, 18L-36R)  
128.425 257.8 (Rwy 18R-36L)  
MEMPHIS DEP CON  
124.15 385.45

**TOP ALTITUDE:  
5000**

### TAKEOFF MINIMUMS:

Rwy 9, 18L/C/R, 27, 36L/C/R:  
Standard with minimum climb of  
500' per NM to 860.



SE-1, 11 JUL 2024 to 08 AUG 2024

SE-1, 11 JUL 2024 to 08 AUG 2024

NOTE: Chart not to scale.

(NARRATIVE ON FOLLOWING PAGE)