

CONDR THREE ARRIVAL (RNAV)

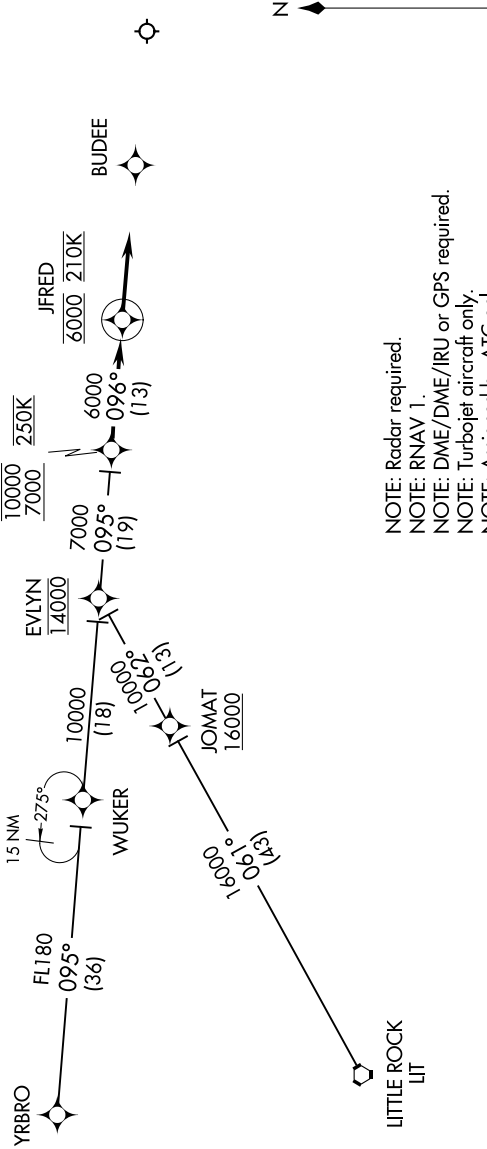
SE-1, 11 JUL 2024 to 08 AUG 2024

ARRIVAL ROUTE DESCRIPTION

EVLYN TRANSITION (EVLYN.CONDR3):
LITTLE ROCK TRANSITION (LIT.CONDR3):
YRBRO TRANSITION (YRBRO.CONDR3):

From over CONDR on track 096° to JFRED, cross JFRED at 6000 at 210K, then on track 096°. Expect radar vectors to final approach course.

MEMPHIS APP CON
119.1 291.6 (176°-355°)
125.8 338.3 (356°-175°)
D-ATIS
127.75



CONDR

10000 250K
7000

EVLYN
14000

10000
(18)

15000
(13)

16000
(13)

17000
(13)

18000
(13)

19000
(13)

20000
(13)

NOTE: Radar required.
NOTE: RNAV 1.
NOTE: DME/DME/IRU or GPS required.
NOTE: Turbojet aircraft only.
NOTE: Assigned by ATC only.

NOTE: Chart not to scale.

SE-1, 11 JUL 2024 to 08 AUG 2024