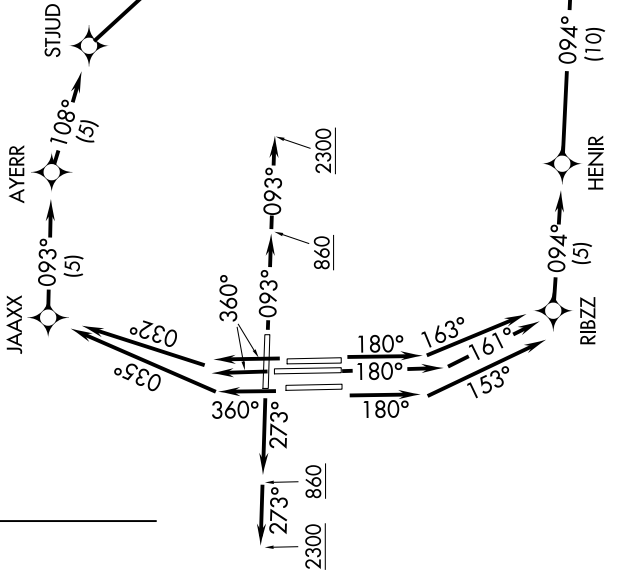


BBKNG SEVEN DEPARTURE (RNAV)

SE-1, 03 OCT 2024 to 31 OCT 2024

TOP ALTITUDE:
5000



D-ATIS 127.75
CLNC DEL 125.2
CPDLC
GND CON
121.0 379.2 (Rwy 9-27)
121.9 379.2 (Rwys 18C-36C, 18L-36R)
121.65 379.2 (Rwy 18R-36L)
MEMPHIS TOWER
118.3 257.8 (Rwy 9-27)
119.7 257.8 (Rwys 18C-36C, 18L-36R)
128.425 257.8 (Rwy 18R-36L)
MEMPHIS DEP CON
124.15 385.45

NOTE: DME/DME/IRU or GPS required.
NOTE: RNAV 1.
NOTE: Turbojets only.
NOTE: Takeoff Rwy 18L/C/R, 36L/C/R - RADAR required for non-GPS equipped aircraft.
NOTE: Takeoff Rwy 9, 27 - RADAR required.
NOTE: Transponder code will be issued via PDC or Memphis clearance delivery.
NOTE: Accelerate to 250K, reaching 10000 MSL, maintain 250K or greater, if unable advise ATC.
NOTE: If unable to accept climb rate, advise ATC on initial contact.

TAKEOFF MINIMUMS:
Rwy 9, 18L/C/R, 27, 36L/C/R: Standard with minimum climb of 500' per NM to 860.
NOTE: Chart not to scale.

(NARRATIVE ON FOLLOWING PAGE)

SE-1, 03 OCT 2024 to 31 OCT 2024

BBKNG SEVEN DEPARTURE (RNAV)