

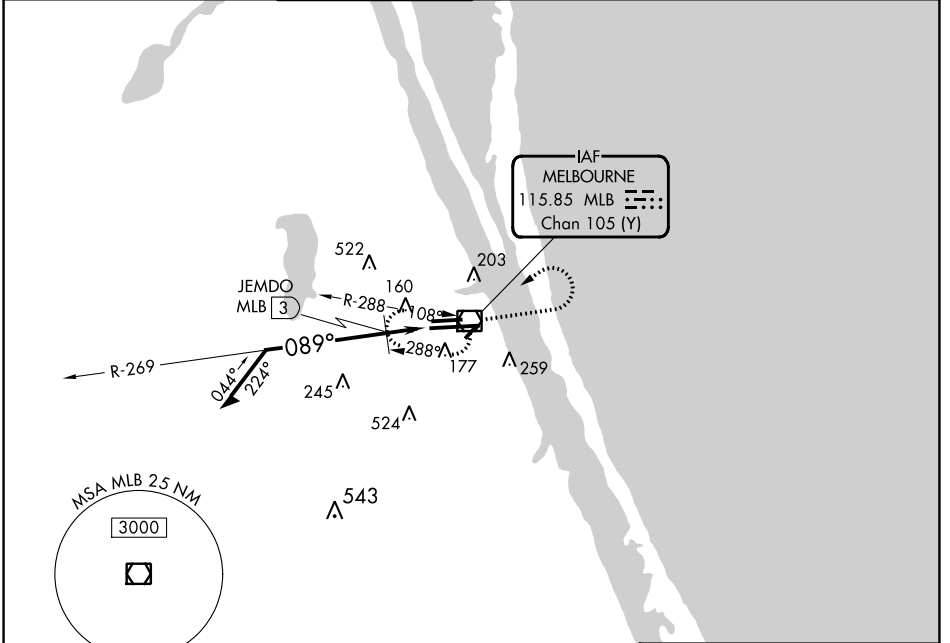
VOR/DME	MLB	APP CRS	Rwy Idg	<b>10181</b>
<b>115.85</b>		<b>089°</b>	TDZE	<b>32</b>
Chan	<b>105 (Y)</b>		Apt Elev	<b>33</b>

# VOR RWY 9R

MELBOURNE ORLANDO INTL (MLB)

<p><b>▼</b> JEMDO FIX minimums: For inop MALSRL, <b>▲</b> increase S-9R Cats C and D visibility to RVR 6000.</p>	<p>MALSRL</p>	<p>MISSED APPROACH: Climb to 1000, then climbing left turn to 2100 direct MLB VOR/DME and hold, continue climb-in-hold to 2100.</p>
--	---------------	---

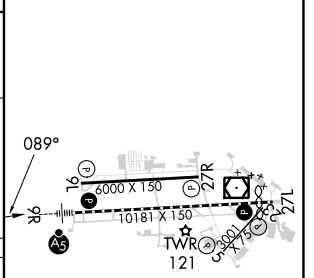
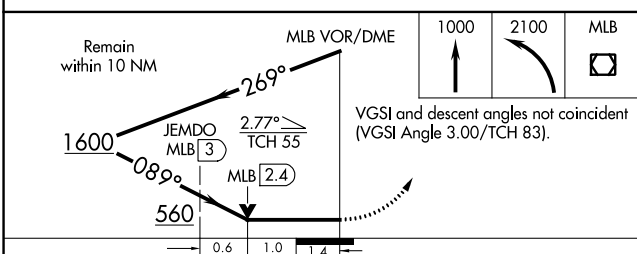
ATIS	ORLANDO APP CON	MELBOURNE TOWER ★	GND CON	CLNC DEL	CLNC DEL	UNICOM
<b>132.55</b>	<b>132.65 281.425</b>	<b>118.2 (CTAF) 257.8</b>	<b>121.9</b>	<b>121.9</b>	<b>132.65</b> (When twr closed)	<b>122.95</b>



SE-3, 03 OCT 2024 to 31 OCT 2024

SE-3, 03 OCT 2024 to 31 OCT 2024

ELEV	<b>33</b>	D	TDZE	<b>32</b>
------	-----------	---	------	-----------



CATEGORY	A	B	C	D
S-9R	560/24	528 (600-½)	560/55	528 (600-1)
<b>C</b> CIRCLING	560-1	527 (600-1)	680-1¾ 647 (700-1¾)	880-2¾ 847 (900-2¾)
JEMDO FIX MINIMUMS				
S-9R	440/24	408 (500-½)	440/40	408 (500-¾)
<b>C</b> CIRCLING	560-1	527 (600-1)	680-1¾ 647 (700-1¾)	880-2¾ 847 (900-2¾)

- REIL Rwy 27L **0**
- HIRL Rwy 9R-27L **0**
- MIRL Rws 5-23 and 9L-27R **0**
- TDZ/CL Rwy 9R **0**