

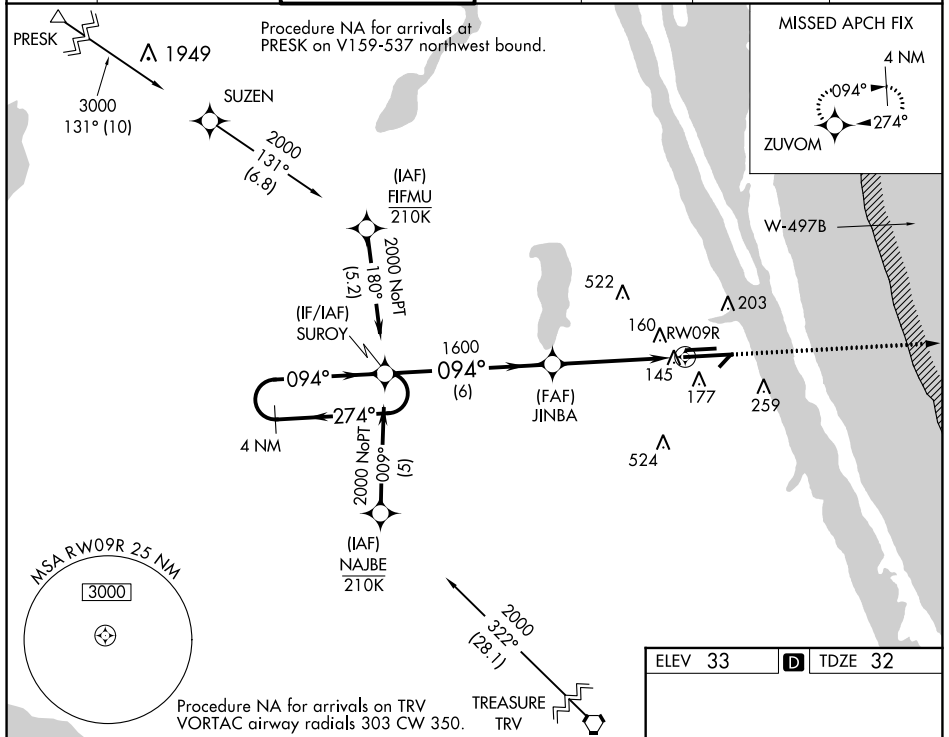
WAAS CH 60901 W09B	APP CRS 094°	Rwy Idg 10181 TDZE 32 Apt Elev 33
--	------------------------	--

RNAV (GPS) RWY 9R

MELBOURNE ORLANDO INTL (MLB)

RNP APCH.		MALSR		MISSED APPROACH: Climb to 2000 direct ZUVOM and hold.	
<p>For uncompensated Baro-VNAV systems, LNAV/VNAV NA below -15°C or above 54°C.</p>					

ATIS 132.55	ORLANDO APP CON 132.65 281.425	MELBOURNE TOWER * 118.2 (CTAF) 257.8	GND CON 121.9	CLNC DEL 121.9	CLNC DEL 132.65 (When twr closed)	UNICOM 122.95
-----------------------	--	---	-------------------------	--------------------------	--	-------------------------



ELEV 33	TDZE 32
---------	---------

SE-3, 31 OCT 2024 to 28 NOV 2024

SE-3, 31 OCT 2024 to 28 NOV 2024