

WAAS CH 77603 W09A	APP CRS 089°	Rwy Idg TDZE Apt Elev	8175 857 869
--	------------------------	-----------------------------	---

RNAV (GPS) RWY 9

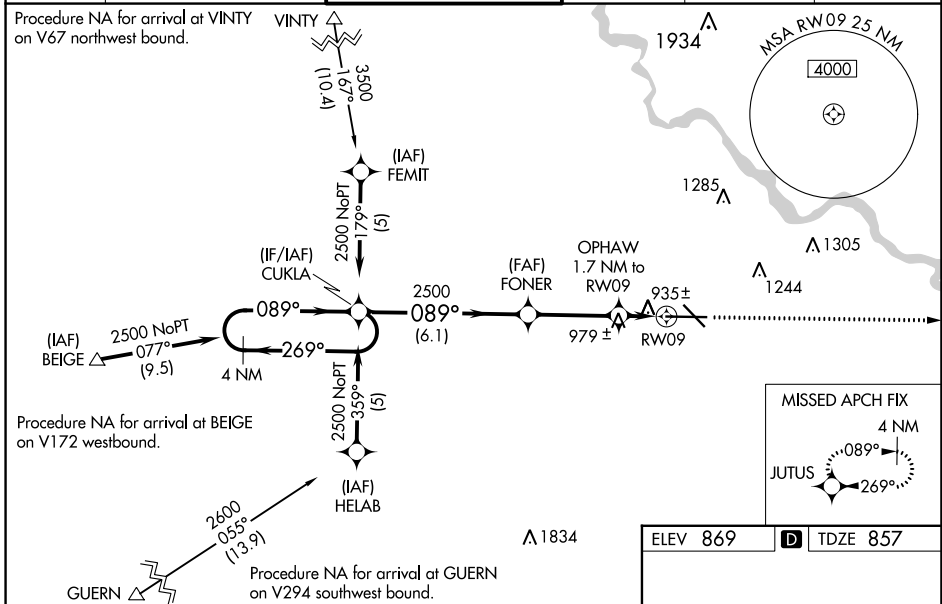
THE EASTERN IOWA (CID)

⚠ Baro-VNAV NA when using Iowa City altimeter setting. For uncompensated Baro-VNAV systems, LNAV/VNAV NA below -16°C (4°F) or above 47°C (116°F). DME/DME RNP-0.3 NA. When local altimeter setting not received use Iowa City altimeter setting: increase LPV DA to 1121 feet; increase LNAV/VNAV DA to 1268 feet and all visibilities to RVR 5000; increase all MDA 80 feet, LNAV Cat C visibility to RVR 4000, and Circling Cat C and D visibility ¼ SM. For inop MALSRS increase LNAV Cat D visibility to RVR 6000. VDP NA with Iowa City altimeter setting. When using Iowa City altimeter setting; for inoperative MALSRS, increase LPV all Cats visibility to RVR 5000, LNAV Cat C visibility to RVR 6000 and LNAV Cat D visibility to 1½ miles.
RVR 1800 authorized with use of FD or AP or HUD to DA, NA when using Iowa City altimeter setting.

MALSRS

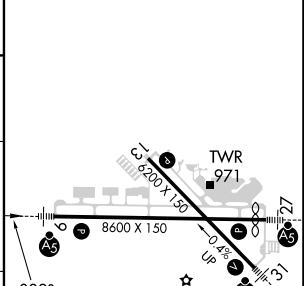
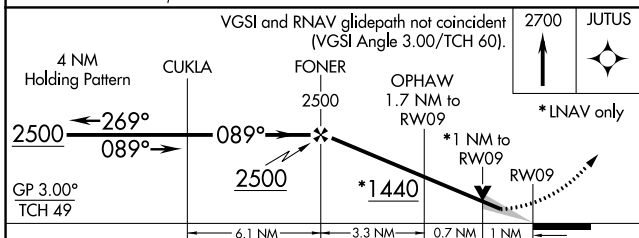
MISSED APPROACH:
Climb to 2700 direct JUTUS and hold.

ATIS 124.15	CEDAR RAPIDS APP CON * 119.7 266.8	CEDAR RAPIDS TOWER * 118.7 (CTAF) 0 266.8	GND CON 121.6	CLNC DEL 125.45	UNICOM 122.95
-----------------------	--	---	-------------------------	---------------------------	-------------------------



MISSED APCH FIX

ELEV 869	D TDZE 857
----------	-------------------



CATEGORY	A	B	C	D
LPV DA#	1057/24 200 (200-½)			
LNAV/VNAV DA	1204/40 347 (400-¾)			
LNAV MDA	1240/24	383 (400-½)	1240/50 383(400-1)	
CIRCLING	1280-1 411 (500-1)	1320-1 451 (500-1)	1560-2 691 (700-2)	1560-2¼ 691 (700-2¼)

MIRL Rwy 13-31
HIRL Rwy 9-27
REIL Rwy 13

NC-3, 05 SEP 2024 to 03 OCT 2024

NC-3, 05 SEP 2024 to 03 OCT 2024