

WAAS CH <b>72902</b> <b>W27A</b>	APP CRS <b>269°</b>	Rwy Idg TDZE Apt Elev	<b>8175</b> <b>862</b> <b>869</b>
--	------------------------	-----------------------------	---


# RNAV (GPS) RWY 27

THE EASTERN IOWA (CID)

**▼** Baro-VNAV NA when using Iowa City altimeter setting. For uncompensated Baro-VNAV systems, LNAV/VNAV NA below -16°C (4°F) or above 47°C (116°F). DME/DME RNP-0.3 NA.

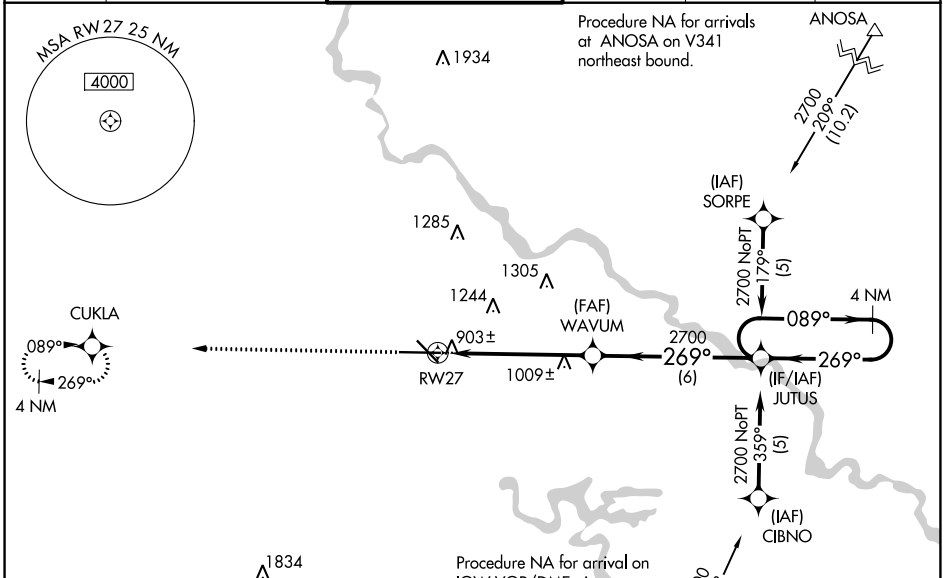
**▲** When local altimeter setting not received, use Iowa City altimeter setting; increase LPV DA to 1192 feet; increase LNAV/VNAV DA to 1243 feet; increase all MDAs 80 feet and Circling visibility Cat C and D ¼ SM. For inop MALSR increase LNAV/VNAV Cat D visibility to RVR 5000 and LNAV Cat D visibility to RVR 6000. VDP NA when using Iowa City altimeter setting.

**MALSR**

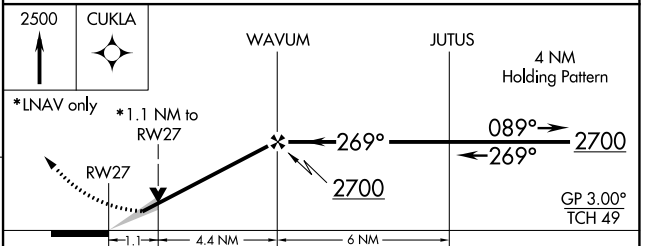
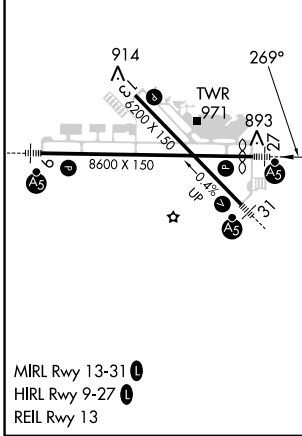


**MISSED APPROACH:**  
Climb to 2500 direct  
CUKLA and hold.

ATIS <b>124.15</b>	CEDAR RAPIDS APP CON* <b>119.7 266.8</b>	CEDAR RAPIDS TOWER* <b>118.7 (CTAF) 266.8</b>	GND CON <b>121.6</b>	CLNC DEL <b>125.45</b>	UNICOM <b>122.95</b>
-----------------------	---	--	-------------------------	---------------------------	-------------------------



ELEV 869	<b>D</b>	TDZE 862
----------	----------	----------



CATEGORY	A	B	C	D
LPV DA	1112/24 250 (300-½)			
LNAV/VNAV DA	1163/24 301 (300-½)			1163/40 301 (300-¾)
LNAV MDA	1260/24 398 (400-½)			1260/50 398 (400-1)
CIRCLING	1280-1 411 (500-1)	1320-1 451 (500-1)	1560-2 691 (700-2)	1560-2¼ 691 (700-2¼)

NC-3, 11 JUL 2024 to 08 AUG 2024

NC-3, 11 JUL 2024 to 08 AUG 2024