

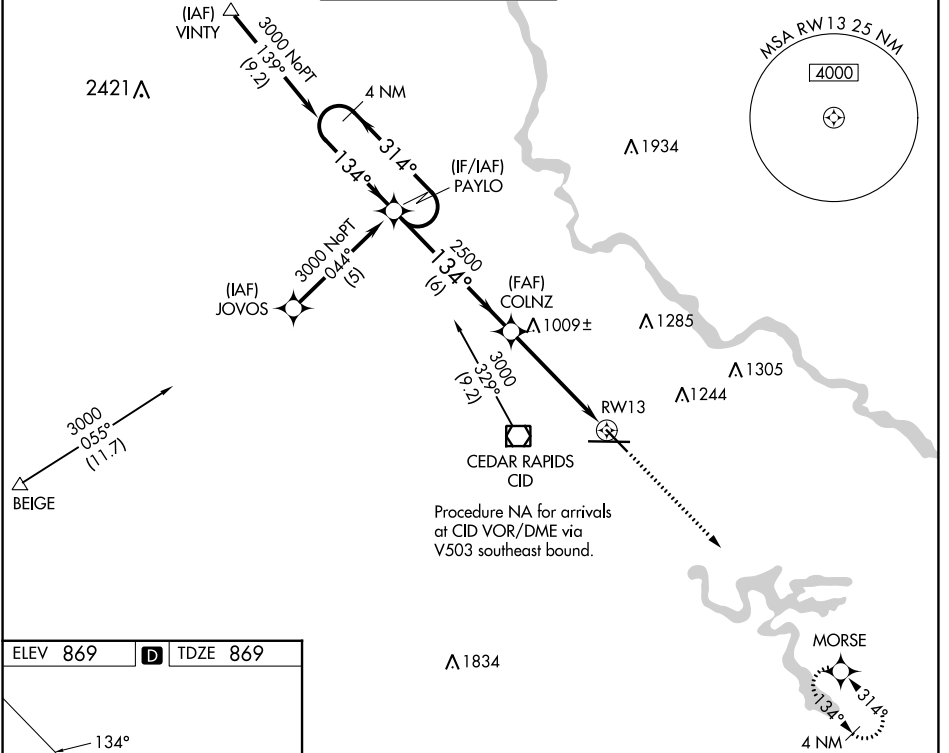
WAAS CH 86201 W13A	APP CRS 134°	Rwy ldg TDZE Apt Elev	6200 869 869
--	------------------------	-----------------------------	---

RNAV (GPS) RWY 13

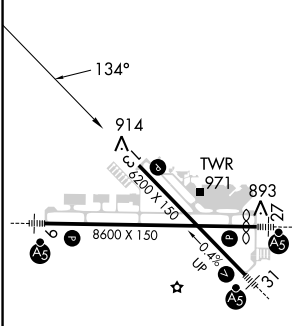
THE EASTERN IOWA (CID)

RNP APCH.	MISSED APPROACH: Climb to 3000 direct MORSE and hold.				
Baro-VNAV NA below -16°C (4°F).					

ATIS 124.15	CEDAR RAPIDS APP CON * 119.7 266.8	CEDAR RAPIDS TOWER * 118.7 (CTAF) 266.8	GND CON 121.6	CLNC DEL 125.45	UNICOM 122.95
-----------------------	--	---	-------------------------	---------------------------	-------------------------



ELEV 869	D	TDZE 869
----------	----------	----------



GP 3.00°	TCH 40
4 NM Holding Pattern	PAYLO
3000	314°
134°	134°
2500	134°
6 NM	3.9 NM
1 NM	
3000	MORSE
*LNNAV only.	
*1 NM to RWY 13	
RWY 13	

VGSI and descent angles not coincident (VGSI Angle 3.00/TCH 51).	3000	MORSE		
	↑	✦		
		*LNNAV only.		
		*1 NM to RWY 13		
		RWY 13		
CATEGORY	A	B	C	D
LPV DA	1120-1 251 (300-1)			
LNNAV/VNAV DA	1200-1¼ 331 (400-1¼)			
LNNAV MDA	1260-1 391 (400-1)			1260-1¼ 391 (400-1¼)