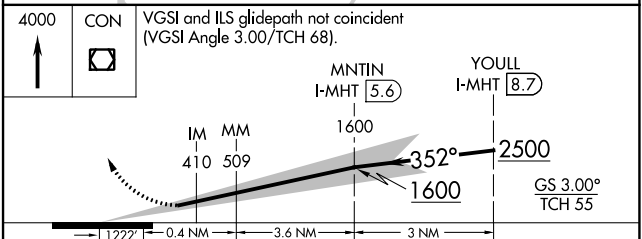
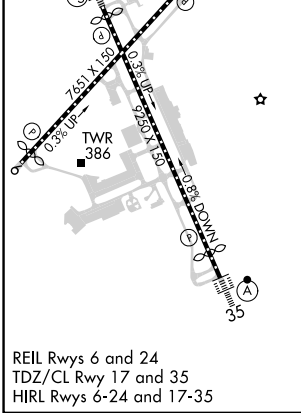
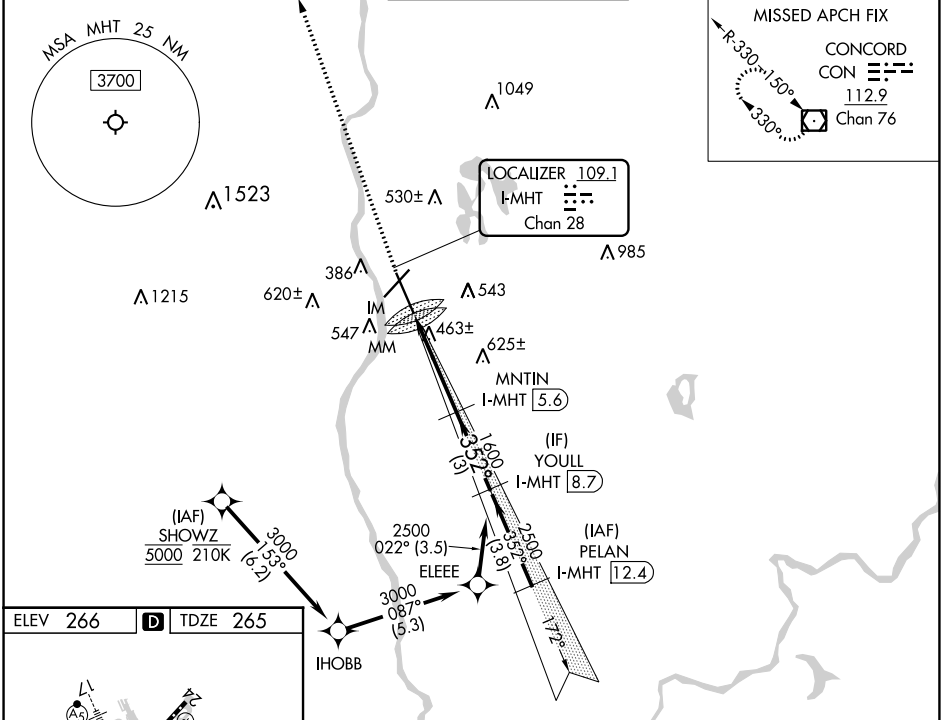


LOC/DME I-MHT 109.1 Chan 28	APP CRS 352°	Rwy Idg TDZE Apt Elev	7650 265 266
--	------------------------	-----------------------------	---

ILS RWY 35 (CAT II & III)

MANCHESTER BOSTON RGNL (MHT)

From SHOWZ: RNAV 1-DME/DME/IRU or GPS required. DME or RADAR required.		ALSIF-2 	MISSED APPROACH: Climb to 4000 direct CON VOR/DME and hold.	
Rwy 35 helicopter visibility reduction below RVR 4000 NA.				
ATIS 119.55	BOSTON APP CON 124.9 269.075	MANCHESTER TOWER 121.3 239.025	GND CON 121.9	CLNC DEL 135.9



CATEGORY	A	B	C	D
S-ILS 35	CAT II RA 101/12 100 DA 365			
S-ILS 35	CAT III RVR 700			

CATEGORY II & III ILS - SPECIAL AIRCREW & AIRCRAFT CERTIFICATION REQUIRED

NE-1, 31 OCT 2024 to 28 NOV 2024

NE-1, 31 OCT 2024 to 28 NOV 2024