

VORTAC MSN <b>108.6</b> Chan <b>23</b>	APP CRS <b>139°</b>	Rwy Idg TDZE <b>861</b> Apt Elev <b>887</b>
--	------------------------	---

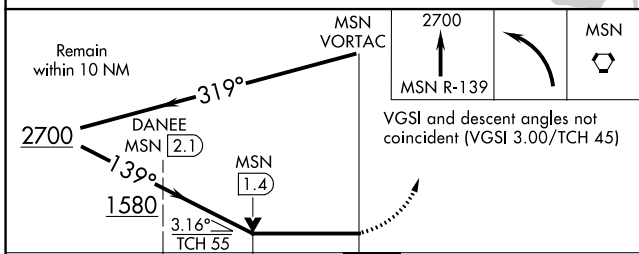
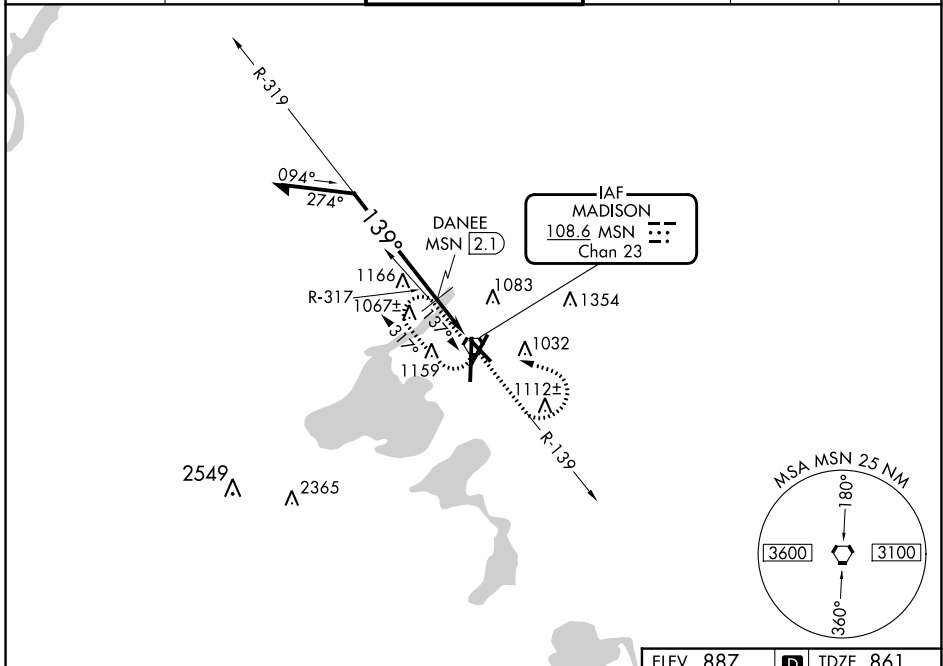
# VOR RWY 14

DANE COUNTY RGNL/TRUAX FLD (MSN)

**⚠** Rwy 14 helicopter visibility reduction below 3/4 SM NA.

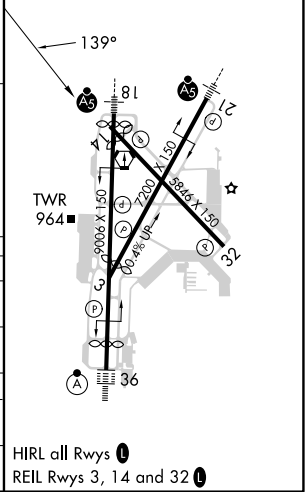
**⚠** MISSED APPROACH: Climb to 2700 via MSN R-139 then left turn direct MSN VORTAC and hold.

ATIS <b>124.65 278.3</b>	MADISON APP CON * <b>135.45 343.7</b>	MADISON TOWER * <b>119.3 (CTAF) 257.8</b>	GND CON <b>121.9 348.6</b>	CLNC DEL <b>121.625</b>	UNICOM <b>122.95</b>
-----------------------------	--	--	-------------------------------	----------------------------	-------------------------



ELEV 887	<b>D</b> TDZE 861
----------	-------------------

CATEGORY	A	B	C	D
S-14	1580-1 719 (700-1)		1580-2 719 (700-2)	
<b>C</b> CIRCLING	1580-1 693 (700-1)		1580-2 693 (700-2)	1700-2 3/4 813 (900-2 3/4)
DANEE FIX MINIMUMS				
S-14	1320-1 459 (500-1)		1320-1 1/4 459 (500-1 1/4)	1320-1 1/2 459 (500-1 1/2)
<b>C</b> CIRCLING	1520-1 633 (700-1)		1520-1 3/4 633 (700-1 3/4)	1700-2 3/4 813 (900-2 3/4)



EC-3, 05 SEP 2024 to 03 OCT 2024

EC-3, 05 SEP 2024 to 03 OCT 2024