

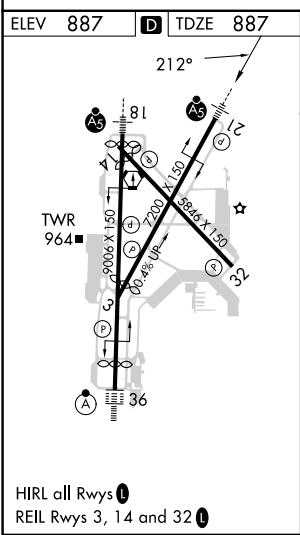
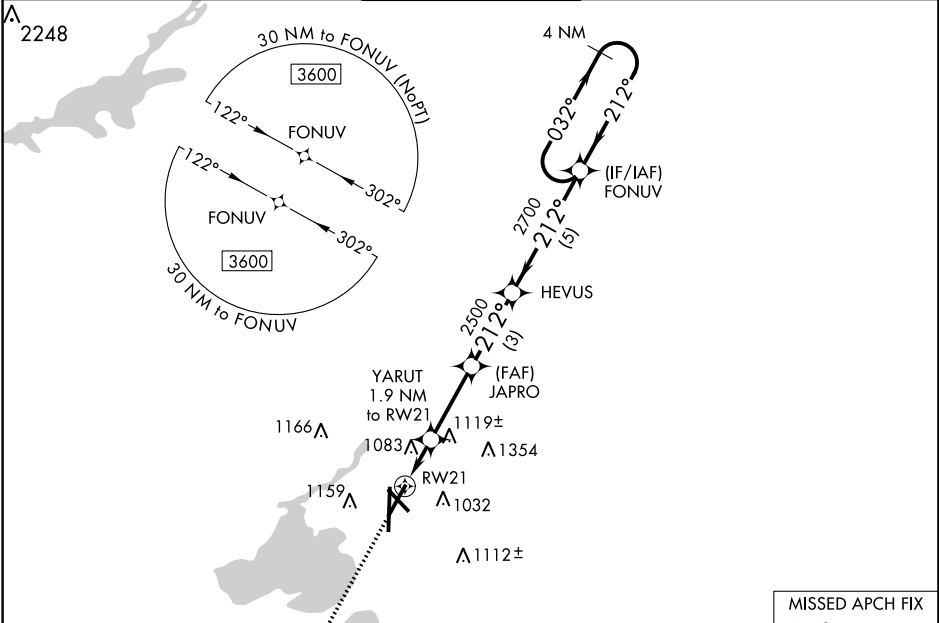
WAAS CH 42829 W21A	APP CRS 212°	Rwy Idg TDZE 887 Apt Elev 887	7015
--	------------------------	---	-------------

RNAV (GPS) RWY 21
DANE COUNTY RGNL/TRUAX FLD (MSN)

⚠ For uncompensated Baro-VNAV systems, LNAV/VNAV NA below -20°C (-4°F) or above 54°C (130°F). DME/DME RNP-0.3 NA. For inop MALSR, increase LNAV/VNAV all Cats visibility to 1 3/4 mile and LNAV Cat C/D visibility to 1 1/2 mile.

MALSR  MISSED APPROACH: Climb to 3600 direct WIROD and hold.

ATIS 124.65 278.3	MADISON APP CON * 135.45 343.7	MADISON TOWER * 119.3 (CTAF) 0 257.8	GND CON 121.9 348.6	CLNC DEL 121.625	UNICOM 122.95
-----------------------------	--	--	-------------------------------	----------------------------	-------------------------



ELEV 887	D TDZE 887
3600 WIROD * LNAV only	FONUV 4 NM Holding Pattern
YARUT 1.9 NM to RW21	JAPRO 2500
* 1.4 NM to RW21	* 1540
1.4 NM	0.5 3 NM 5 NM
212°	212° 2700 032° 3600
GP 3.00° TCH 53	
CATEGORY	A B C D
LPV DA	1087-1/2 200 (200-1/2)
LNAV/VNAV DA	1412-1 3/8 525 (600-1 3/8)
LNAV MDA	1380-1/2 493 (500-1/2) 1380-1 493 (500-1)
C CIRCLING	1420-1 533 (600-1) 1460-1 573 (600-1) 1460-1 1/2 573 (600-1 1/2) 1700-2 3/4 813 (900-2 3/4)

EC-3, 08 AUG 2024 to 05 SEP 2024

EC-3, 08 AUG 2024 to 05 SEP 2024