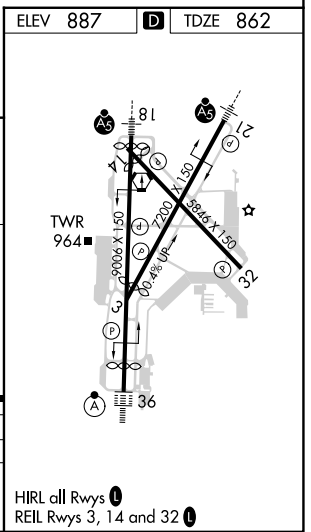
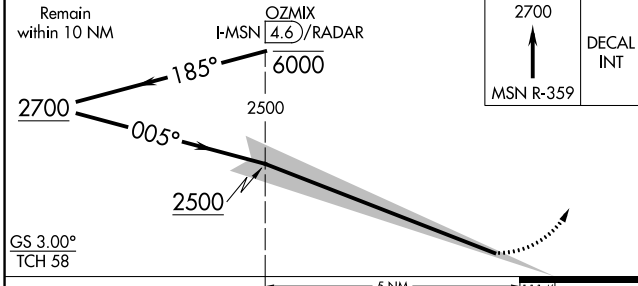
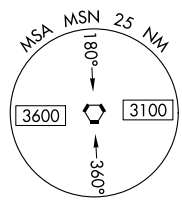
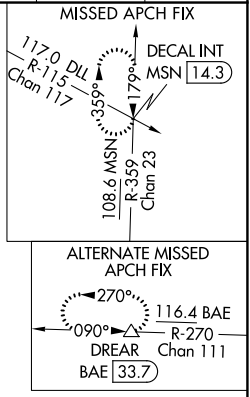
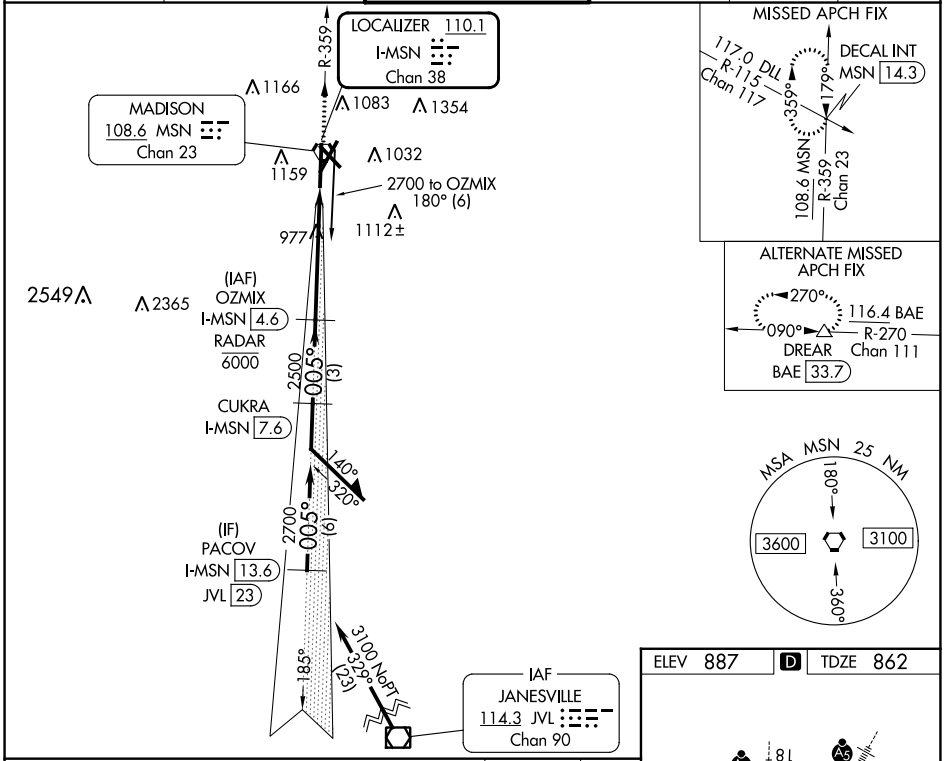


LOC/DME I-MSN 110.1 Chan 38	APP CRS 005°	Rwy Idg TDZE Apt Elev	8005 862 887
---	------------------------	-----------------------------	---

ILS RWY 36 (SA CAT I)

DANE COUNTY RGNL/TRUAX FLD (MSN)

DME or RADAR required.		ALSf-2	MISSED APPROACH: Climb to 2700 on MSN VORTAC R-359 to DECAL INT/MSN 14.3 DME and hold.		
ATIS 124.65 278.3	MADISON APP CON * 135.45 343.7	MADISON TOWER * 119.3 (CTAF) 0 257.8	GND CON 121.9 348.6	CLNC DEL 121.625	UNICOM 122.95



GS 3.00° TCH 58	RA 159/14 150 DA 1012			
CATEGORY	A	B	C	D
S-ILS 36	RA 159/14 150 DA 1012			

SA CATEGORY I ILS - SPECIAL AIRCREW & AIRCRAFT CERTIFICATION REQUIRED

HIRL all Rwy's
REIL Rwy's 3, 14 and 32

EC-3, 31 OCT 2024 to 28 NOV 2024

EC-3, 31 OCT 2024 to 28 NOV 2024