

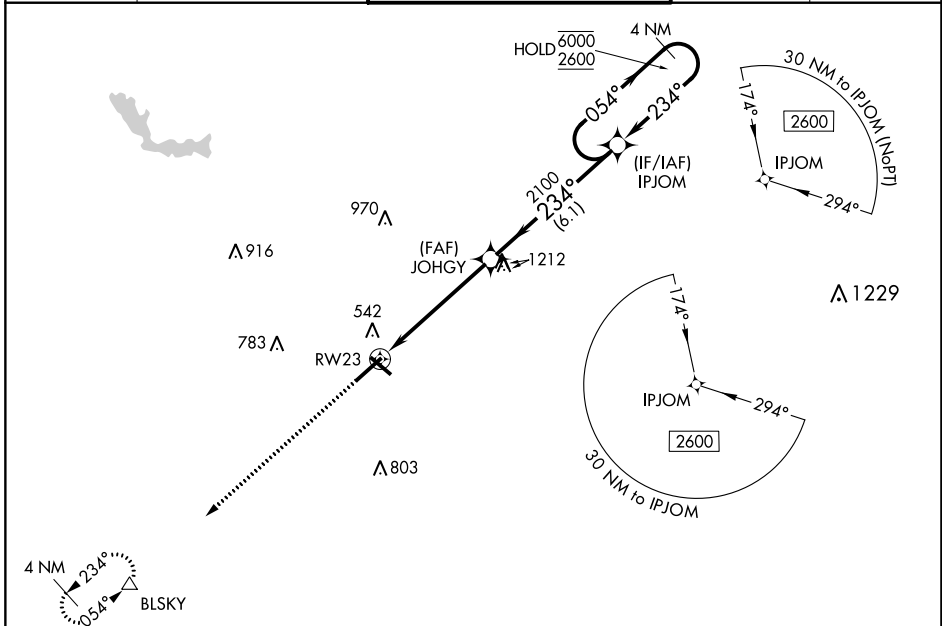
WAAS CH <b>40419</b> <b>W23A</b>	APP CRS <b>234°</b>	Rwy Idg TDZE Apt Elev	<b>6426</b> <b>354</b> <b>354</b>
--	------------------------	-----------------------------	---

# RNAV (GPS) RWY 23

MIDDLE GEORGIA RGNL (MCN)

RNP APCH.		MISSED APPROACH: Climb to 2600 direct BLSKY and hold.	
Rwy 23 helicopter visibility reduction below 3/4 SM NA. For uncompensated Baro-VNAV systems, LNAV/VNAV NA below -8°C or above 54°C.			

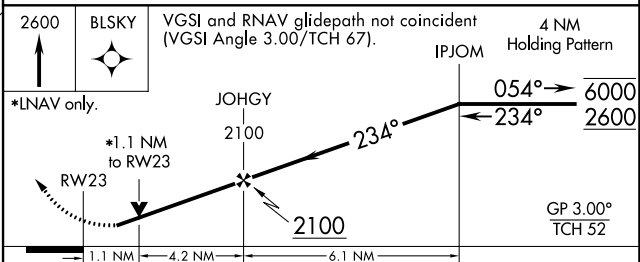
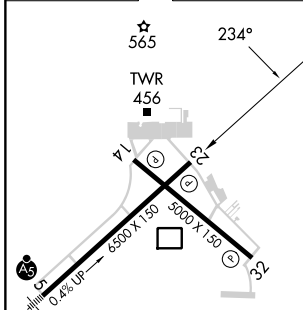
ATIS <b>120.775</b>	ATLANTA APP CON ★ <b>124.2 279.6</b>	MACON TOWER ★ <b>128.2 (CTAF) 257.8</b>	GND CON <b>121.65</b>	UNICOM <b>122.95</b>
------------------------	---	--	--------------------------	-------------------------



SE-4, 31 OCT 2024 to 28 NOV 2024

SE-4, 31 OCT 2024 to 28 NOV 2024

ELEV 354	<b>D</b>	TDZE 354
----------	----------	----------



CATEGORY	A	B	C	D
LPV DA		635-1	281 (300-1)	
LNAV/VNAV DA		726-1¼		372 (400-1¼)
LNAV MDA	760-1	406 (500-1)		760-1½ 406 (500-1½)
CIRCLING	900-1	546 (600-1)		920-1½ 566 (600-1½) 1120-2½ 766 (800-2½)

HIRL Rwy 5-23   
 MIRL Rwy 14-32   
 REIL Rwy 23, and 32