

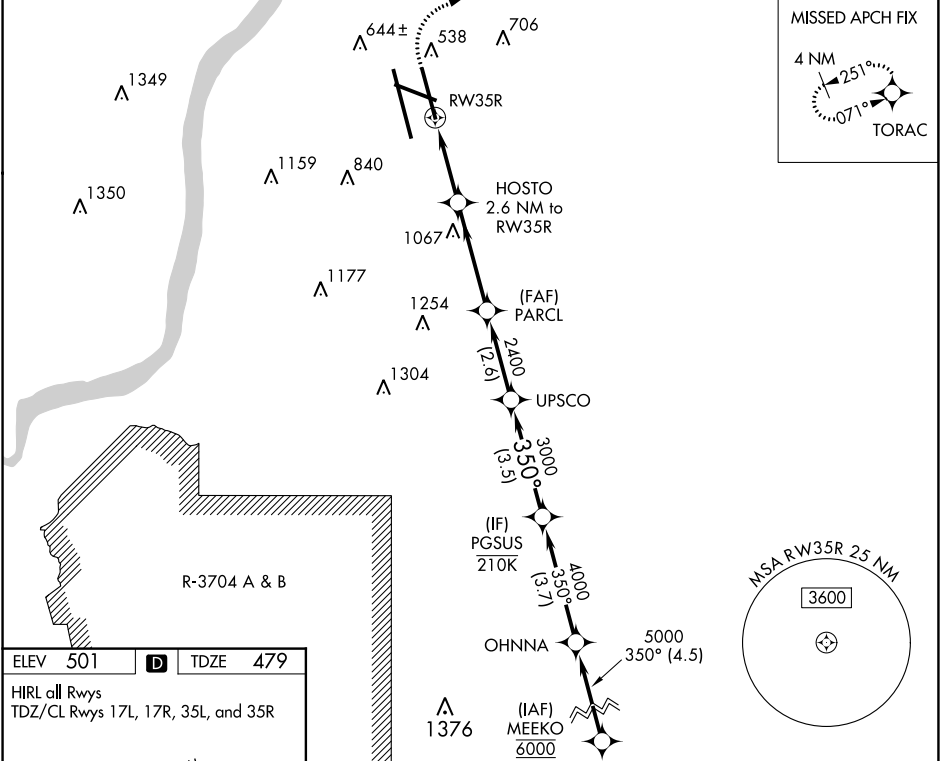
WAAS CH <b>70709</b> <b>W35D</b>	APP CRS <b>350°</b>	Rwy ldg TDZE Apt Elev	<b>7800</b> <b>479</b> <b>501</b>
--	------------------------	-----------------------------	---

# RNAV (GPS) Y RWY 35R

LOUISVILLE MUHAMMAD ALI INTL (SDF)

RNP APCH - GPS.		ALSIF-2 MISSED APPROACH: Climb to 1600 then climbing right turn to 4000 direct TORAC and hold.	
<p>Simultaneous approach authorized. LNAV procedure NA during simultaneous operations.</p> <p>Use of FD or AP required during simultaneous operations. Circling Rwy 11 NA at night.</p> <p>For uncompensated Baro-VNAV systems, LNAV/VNAV NA below -13°C or above 54°C.</p>			

D-ATIS <b>118.725</b>	LOUISVILLE APP CON <b>132.075 327.0</b>	LOUISVILLE TOWER <b>124.2 257.8</b>	GND CON <b>121.7 348.6</b>	CLNC DEL <b>126.1 275.8</b>	CPDLC
--------------------------	--	--	-------------------------------	--------------------------------	-------

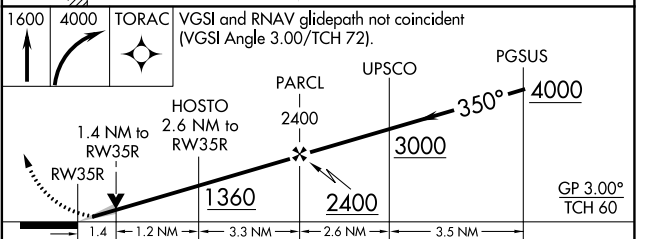
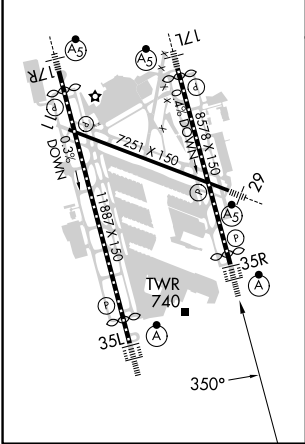


SE-1, 05 SEP 2024 to 03 OCT 2024

SE-1, 05 SEP 2024 to 03 OCT 2024

ELEV 501	<b>D</b>	TDZE 479
----------	----------	----------

HIRL all Rwys  
TDZ/CL Rwys 17L, 17R, 35L, and 35R



CATEGORY	A		B		C		D
LPV DA	679/18		200 (200-1/2)				
LNAV/VNAV DA	901/40		422 (400-3/4)				
LNAV MDA	1000/24	521 (500-1/2)	1000/55	521 (500-1)			
<b>C</b> CIRCLING	1040-1 539 (600-1)	1140-1 639 (700-1)	1160-1 1/4 659 (700-1 1/4)	1400-3 899 (900-3)			