

RNAV (RNP) Z RWY 35R

LOUISVILLE MUHAMMAD ALI INTL (SDF)

| | | |
|-------------|----------|-------------|
| APP CRS | Rwy Idg | 7800 |
| 350° | TDZE | 479 |
| | Apt Elev | 501 |

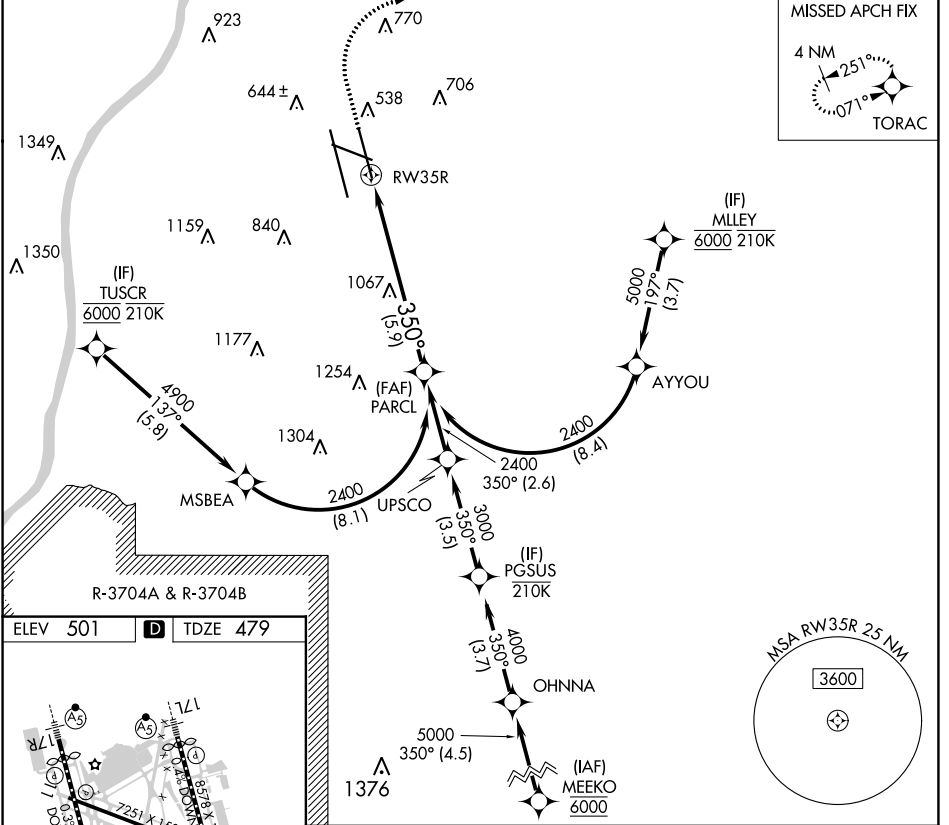
RNP AR APCH - GPS.

▼ For uncompensated Baro-VNAV systems, procedure NA below -13°C or above 54°C. For inop ALS, increase RNP 0.12 all Cats visibility to RVR 4500. Simultaneous approach authorized.

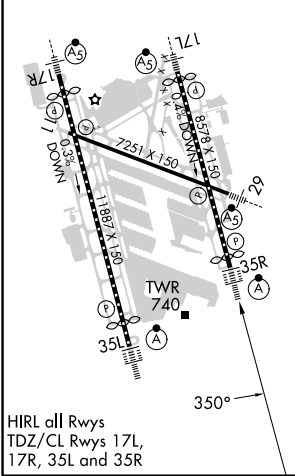
ALSF-2

MISSED APPROACH: Climb to 1600 then climbing right turn to 4000 direct TORAC and hold.

| | | | | | |
|----------------|----------------------|--------------------|--------------------|--------------------|-------|
| D-ATIS | LOUISVILLE APP CON | LOUISVILLE TOWER | GND CON | CLNC DEL | CPDLC |
| 118.725 | 132.075 327.0 | 124.2 257.8 | 121.7 348.6 | 126.1 275.8 | |



| | | | | |
|------|------------|----------|------|------------|
| ELEV | 501 | D | TDZE | 479 |
|------|------------|----------|------|------------|



1600 4000 TORAC

VGSI and RNAV glidepath not coincident (VGSI Angle 3.00/TCH 72). See planview for multiple IF locations.

PARCL 2400

RW35R 350°

5.9 NM

GP 3.00° TCH 60

| CATEGORY | A | B | C | D |
|-------------|---|--------|---------------|---|
| RNP 0.12 DA | | 792/24 | 313 (300-1/2) | |
| RNP 0.30 DA | | 892/40 | 413 (400-3/4) | |

AUTHORIZATION REQUIRED

SE-1, 05 SEP 2024 to 03 OCT 2024

SE-1, 05 SEP 2024 to 03 OCT 2024