

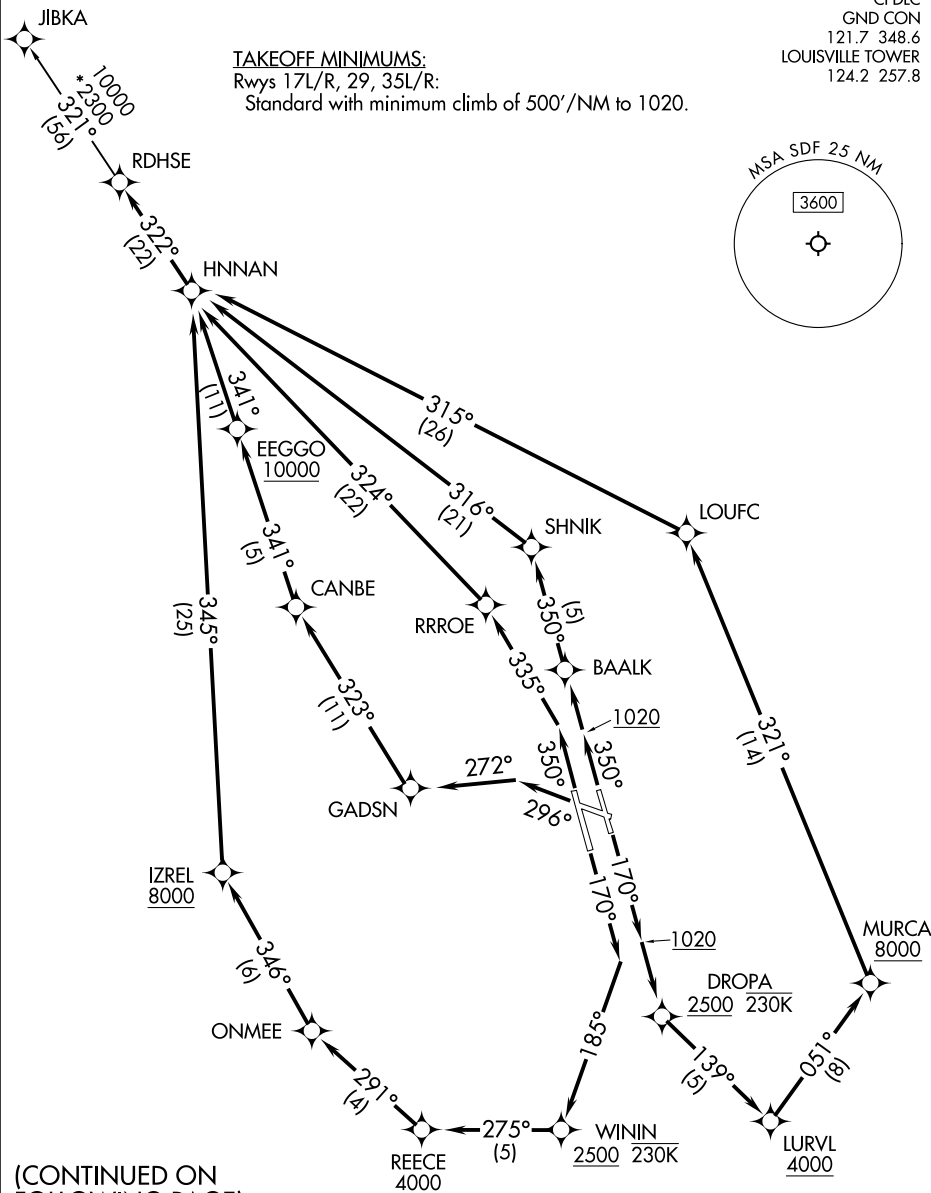
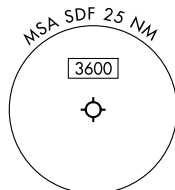
# RDHSE ONE DEPARTURE (RNAV)

**TOP ALTITUDE:**  
**13000**

RNAV 1 - DME/DME/IRU or GPS.  
RADAR required for non-GPS equipped aircraft.

LOUISVILLE DEP CON 132.075 327.0  
D-ATIS 118.725  
CLNC DEL 126.1 275.8  
CPDLC  
GND CON 121.7 348.6  
LOUISVILLE TOWER 124.2 257.8

**TAKEOFF MINIMUMS:**  
Rwys 17L/R, 29, 35L/R:  
Standard with minimum climb of 500'/NM to 1020.



(CONTINUED ON FOLLOWING PAGE)

NOTE: Chart not to scale.

# RDHSE ONE DEPARTURE (RNAV)

SE-1, 05 SEP 2024 to 03 OCT 2024

SE-1, 05 SEP 2024 to 03 OCT 2024