

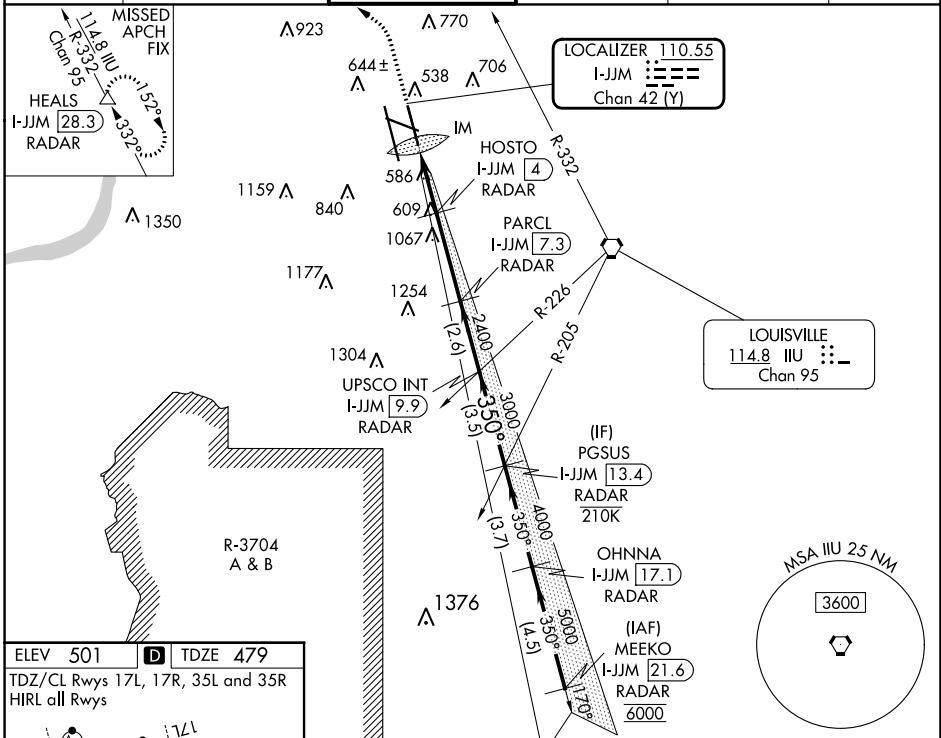
LOC/DME I-JJM <b>110.55</b> Chan <b>42 (Y)</b>	APP CRS <b>350°</b>	Rwy Idg TDZE Apt Elev	<b>7800</b> <b>479</b> <b>501</b>
--	------------------------	-----------------------------	---

# ILS or LOC RWY 35R

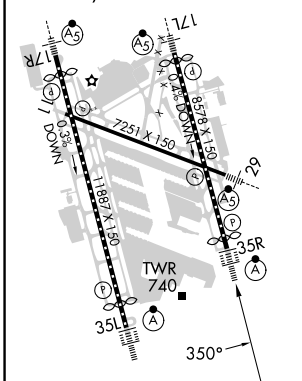
LOUISVILLE MUHAMMAD ALI INTL (SDF)

DME or RADAR required for LOC only.	ALSF-2	MISSED APPROACH: Climb to 2500 then climbing left turn to 4000 on heading 350° and on IIL VORTAC R-332 to HEALS/28.3 DME/RADAR and hold.
Simultaneous approach authorized. Circling Rwy 11 NA at night. For inop ALS, increase LOC Cat C/D to 5000 RVR.		

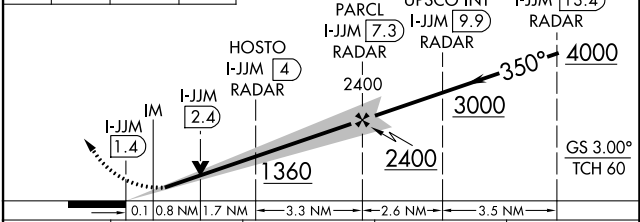
D-ATIS <b>118.725</b>	LOUISVILLE APP CON <b>132.075 327.0</b>	LOUISVILLE TOWER <b>124.2 257.8</b>	GND CON <b>121.7 348.6</b>	CLNC DEL <b>126.1 275.8</b>	CPDLC
--------------------------	--	--	-------------------------------	--------------------------------	-------



ELEV 501	<b>D</b> TDZE 479
TDZ/CL Rwys 17L, 17R, 35L and 35R	
HIRL all Rwys	



2500	4000	HEALS	VGSI and ILS glidepath not coincident (VGSI Angle 3.00/TCH 72).
	hdg 350°	IIL R-332	



CATEGORY	A	B	C	D
S-ILS 35R	679/18 200 (200-½)			
S-LOC 35R	840/24	361 (400-½)	840/35	361 (400-¾)
<b>C</b> CIRCLING	1040-1 539 (600-1)	1140-1 639 (700-1)	1160-1¾ 659 (700-1¾)	1400-3 899 (900-3)

FAF to MAP 5.9 NM					
Knots	60	90	120	150	180
Min:Sec	5:54	3:56	2:57	2:22	1:58

SE-1, 03 OCT 2024 to 31 OCT 2024

SE-1, 03 OCT 2024 to 31 OCT 2024