

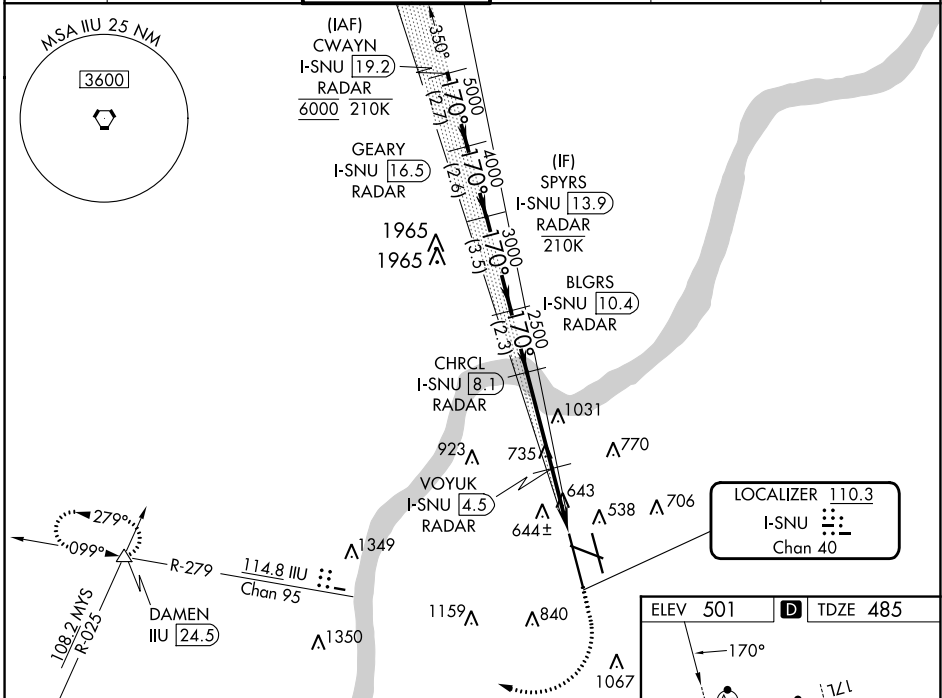
LOC/DME I-SNU <b>110.3</b> Chan <b>40</b>	APP CRS <b>170°</b>	Rwy Idg <b>10000</b> TDZE <b>485</b> Apt Elev <b>501</b>
---	------------------------	--

# ILS or LOC RWY 17R

LOUISVILLE MUHAMMAD ALI INTL (SDF)

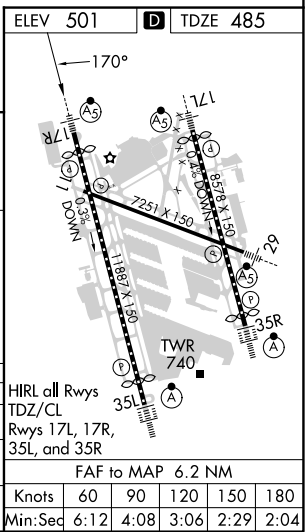
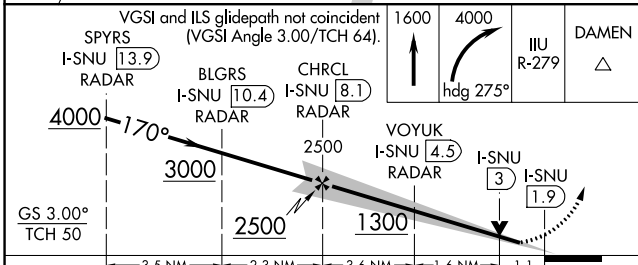
RADAR required for procedure entry at CWAYN. DME or RADAR required.		MALSR 	MISSED APPROACH: Climb to 1600 then climbing right turn to 4000 on heading 275° and on IIL VORTAC R-279 to DAMEN INT/24.5 DME and hold.
<p><b>▼</b> Simultaneous approach authorized. Circling Rwy 11 NA at night.  <b>▲</b> For inop ALS, increase S-LOC 17R Cat C/D visibility to RVR 6000.</p>			

D-ATIS <b>118.725</b>	LOUISVILLE APP CON <b>132.075 327.0</b>	LOUISVILLE TOWER <b>124.2 257.8</b>	GND CON <b>121.7 348.6</b>	CLNC DEL <b>126.1 275.8</b>	CPDLC
--------------------------	--	--	-------------------------------	--------------------------------	-------



SE-1, 05 SEP 2024 to 03 OCT 2024

SE-1, 05 SEP 2024 to 03 OCT 2024



CATEGORY	A	B	C	D
S-ILS 17R	685/18 200 (200-½)			
S-LOC 17R	900/24	415 (400-½)	900/40	415 (400-¾)
<b>C</b> CIRCLING	1040-1 539 (600-1)	1140-1 639 (700-1)	1160-1¾ 659 (700-1¾)	1400-3 899 (900-3)

HIRL all Rwys TDZ/CL	Rwys 17L, 17R, 35L, and 35R				
FAF to MAP 6.2 NM					
Knots	60	90	120	150	180
Min:Sec	6:12	4:08	3:06	2:29	2:04