

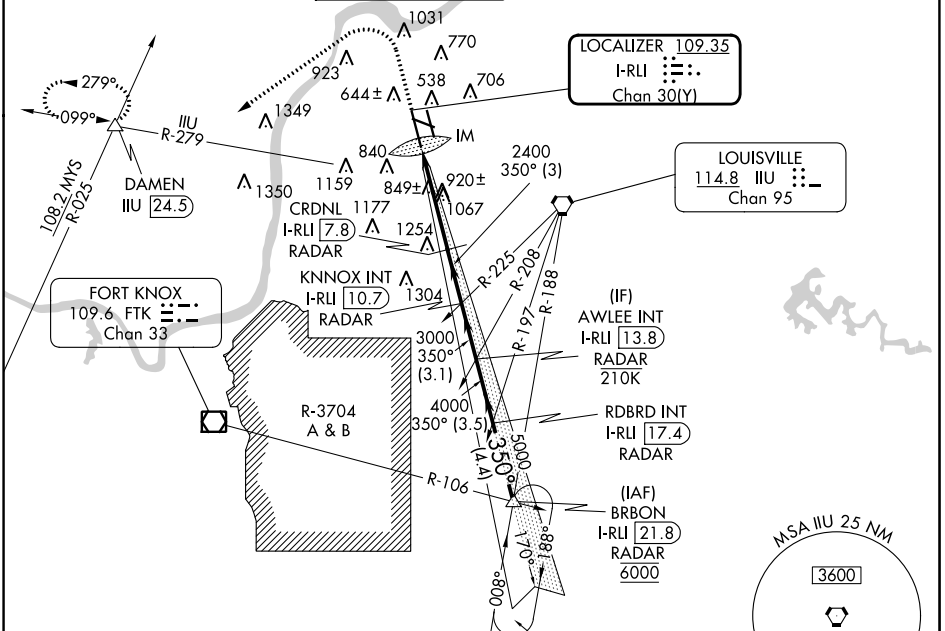
LOC/DME I-RLI 109.35	APP CRS 350°	Rwy Idg TDZE Apt Elev	10000 464 501
Chan 30(Y)			

ILS RWY 35L (CAT II & III)

LOUISVILLE MUHAMMAD ALI INTL (SDF')

RADAR required.		ALSF-2 	MISSED APPROACH: Climb to 1000 then climbing left turn to 4000 on heading 240° and IJU VORTAC R-279 to DAMEN INT/ IJU 24.5 DME and hold.
<p>Simultaneous approach authorized. CAT II: RVR 1000 authorized with specific OPSPEC, MSPEC, or LOA approval and use of autoland or HUD to touchdown.</p>			

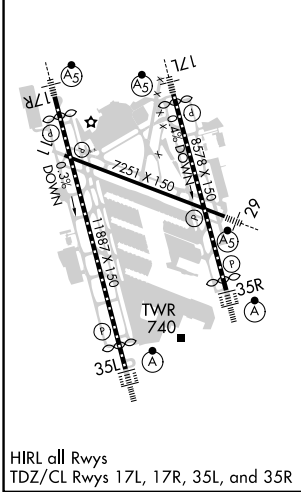
D-ATIS 118.725	LOUISVILLE APP CON 132.075 327.0	LOUISVILLE TOWER 124.2 257.8	GND CON 121.7 348.6	CLNC DEL 126.1 275.8	CPDLC
--------------------------	--	--	-------------------------------	--------------------------------	-------



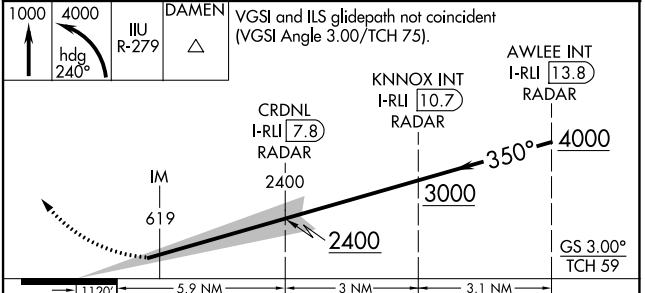
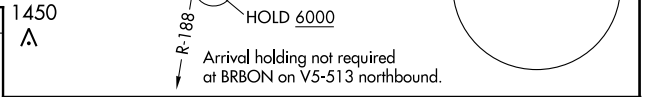
SE-1, 05 SEP 2024 to 03 OCT 2024

SE-1, 05 SEP 2024 to 03 OCT 2024

ELEV 501	D	TDZE 464
----------	----------	----------



HIRL all Rwys
TDZ/CL Rwys 17L, 17R, 35L, and 35R



CATEGORY	A	B	C	D
S-ILS 35L	CAT II RA 99/12 100 DA 564			
S-ILS 35L	CAT III RVR 600			

CATEGORY II & III ILS - SPECIAL AIRCREW & AIRCRAFT CERTIFICATION REQUIRED