

WAAS CH 49007 W25B	APP CRS 251°	Rwy Idg 11134 TDZE 104 Apt Elev 128
--	------------------------	--

RNAV (GPS) Y RWY 25R

LOS ANGELES INTL (LAX)

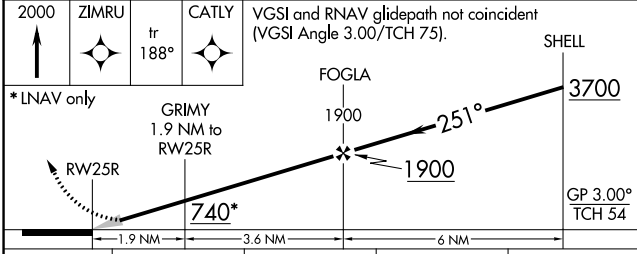
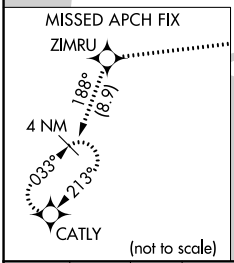
RNP APCH.	MALSR	MISSED APPROACH: Climb to 2000 direct ZIMRU and track 188° to CATLY and hold.
<p>▼ For uncompensated Baro-VNAV systems, LNAV/VNAV NA below 5°C or above 54°C. Simultaneous approach authorized. Simultaneous approach authorized with HHR. LNAV procedure NA during simultaneous operations. Use of FD or AP required during simultaneous operations. # RVR 1800 authorized with use of FD or AP or HUD to DA.</p>		

D-ATIS ARR 133.8 DEP 135.65	SOCAL APP CON 124.3 363.2 (APCH FM WEST) 124.5 235.975 (225°-044°)	124.9 269.0 (090°-224°) 128.5 360.7 (045°-089°)	LOS ANGELES TOWER N 133.9 239.3 S 120.95 379.1	GND CON N 121.65 327.0 S 121.75 327.0 W 121.4 327.0	CLNC DEL 120.35 327.0	CPDLC
---	--	--	--	---	---	-------



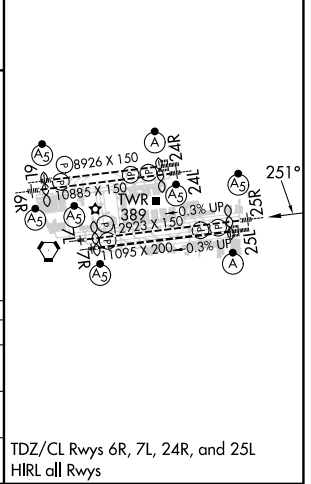
SW-3, 31 OCT 2024 to 28 NOV 2024

SW-3, 31 OCT 2024 to 28 NOV 2024



CATEGORY	A	B	C	D
LPV DA#		304/24	200 (200-½)	
LNAV/VNAV DA		578/60	474 (500-1¼)	
LNAV MDA	640/24	536 (600-½)	640/55	536 (600-1)

ELEV 128	TDZE 104
----------	----------



TDZ/CL Rwy's 6R, 7L, 24R, and 25L
HIRL all Rwy's