

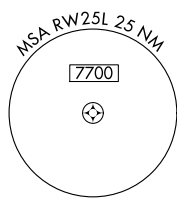
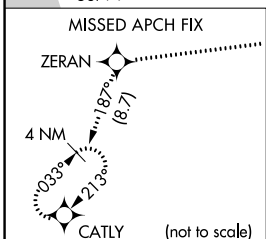
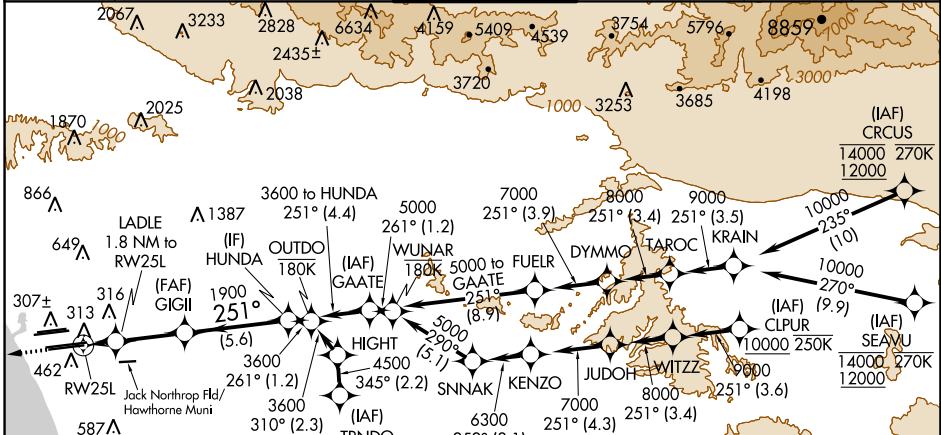
WAAS CH 53507 W25A	APP CRS 251°	Rwy Idg 11095 TDZE 104 Apt Elev 128
--	------------------------	--

RNAV (GPS) Y RWY 25L

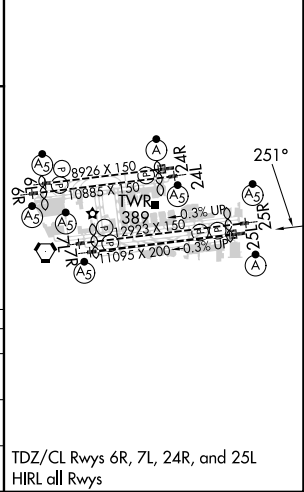
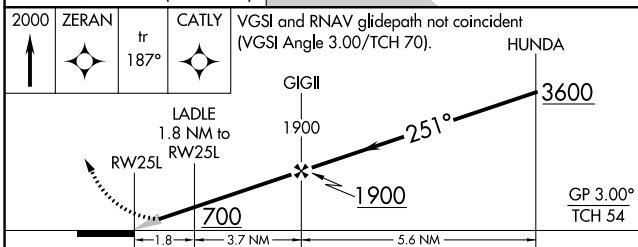
LOS ANGELES INTL (LAX)

RNP APCH - GPS.	ALSF-2 	MISSED APPROACH: Climb to 2000 direct ZERAN and on track 187° to CATLY and hold.
<p>▼ For uncompensated Baro-VNAV systems, LNAV/VNAV NA below 5°C or above 54°C. Simultaneous approach authorized. Simultaneous approach authorized with HHR 25. For inop ALS, increase LNAV/VNAV all Cats visibility to RVR 5500, LNAV Cat C/D visibility to 1 3/8 SM. LNAV procedure NA during simultaneous operations. Use of FD or AP required during simultaneous operations.</p>		

D-ATIS ARR 133.8 DEP 135.65	SOCAL APP CON 124.3 363.2 [APCH FM WEST] 124.5 235.975 [225°-044°]	124.9 269.0 (090°-224°) 128.5 360.7 [045°-089°]	LOS ANGELES TOWER N 133.9 239.3 S 120.95 379.1	GND CON N 121.65 327.0 S 121.75 327.0 W 121.4 327.0	CLNC DEL 120.35 327.0	CPDLC
---	--	--	--	---	---	-------



ELEV 128	D TDZE 104
----------	-------------------



CATEGORY	A	B	C	D
LPV DA		304/18	200 (200-1/2)	
LNAV/VNAV DA		479/35	375 (400-3/8)	
LNAV MDA	580/24	476 (500-1/2)	580/50	476 (500-1)

TDZ/CL Rwws 6R, 7L, 24R, and 25L
HIRL all Rwws

SW-3, 11 JUL 2024 to 08 AUG 2024

SW-3, 11 JUL 2024 to 08 AUG 2024