

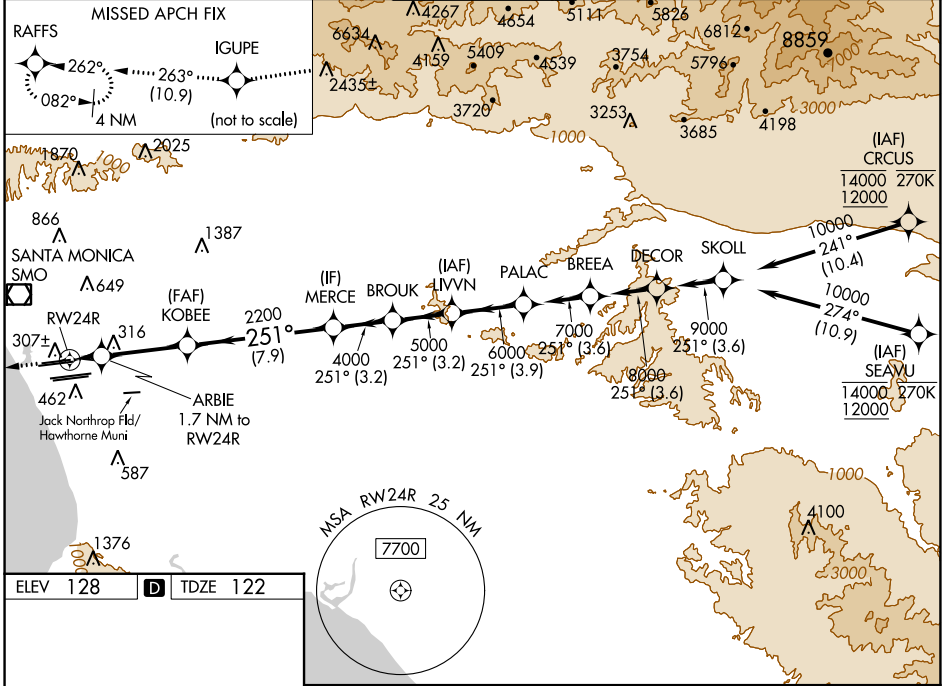
WAAS CH <b>69307</b> <b>W24A</b>	APP CRS <b>251°</b>	Rwy Idg TDZE Apt Elev	<b>8926</b> <b>122</b> <b>128</b>
--	------------------------	-----------------------------	---

# RNAV (GPS) Y RWY 24R

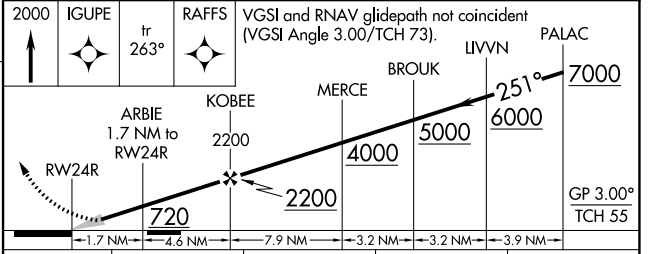
LOS ANGELES INTL (LAX)

RNP APCH.	<p>▼ LNAV procedure NA during simultaneous operations. Use of FD or AP required during simultaneous operations. Simultaneous approach authorized with HHR. For uncompensated Baro-VNAV systems, LNAV/VNAV NA below 6°C or above 54°C. Simultaneous approach authorized. For inop ALS, increase LNAV/VNAV all Cats visibility to 1½ SM, and LNAV Cat C/D visibility to 1⅓ SM.</p>	<p>ALS-F-2</p>	<p>MISSED APPROACH: Climb to 2000 direct IGUPE and track 263° to RAFFS and hold.</p>
-----------	--	----------------	--

D-ATIS ARR <b>133.8</b> DEP <b>135.65</b>	SOCAL APP CON <b>124.3 363.2</b> <small>[APCH FM WEST]</small> <b>124.5 235.975</b> <small>[225°-044°]</small>	<b>124.9 269.0</b> <small>[090°-224°]</small> <b>128.5 360.7</b> <small>[045°-089°]</small>	LOS ANGELES TOWER <b>N 133.9 239.3</b> <b>S 120.95 379.1</b>	GND CON <b>N 121.65 327.0</b> <b>S 121.75 327.0</b> <b>W 121.4 327.0</b>	CLNC DEL <b>120.35</b> <b>327.0</b>	CPDLC
---	--	--	--	---	---	-------



ELEV <b>128</b>	<b>D</b>	TDZE <b>122</b>
<p>TDZ/CL Rwy 6s, 7L, 24R, and 25L HIRL all Rwys</p>		



CATEGORY	A	B	C	D
LPV	DA	322/18	200 (200-½)	
LNAV/VNAV	DA	589/60	467 (500-1¼)	
LNAV MDA	640/24	518 (600-½)	640/55	518 (600-1)

SW-3, 11 JUL 2024 to 08 AUG 2024

SW-3, 11 JUL 2024 to 08 AUG 2024