

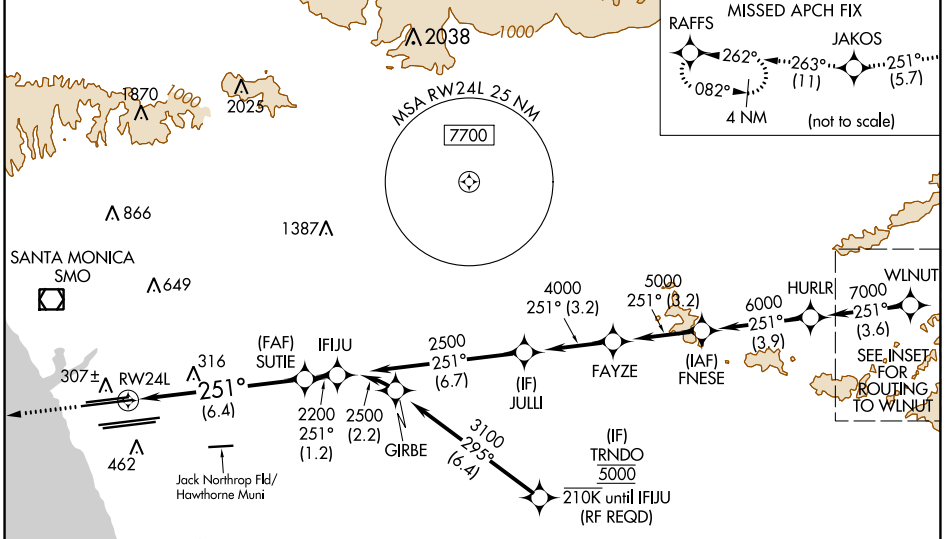
APP CRS	Rwy Idg	<b>9483</b>
<b>251°</b>	TDZE	<b>123</b>
	Apt Elev	<b>128</b>

# RNAV (RNP) Z RWY 24L

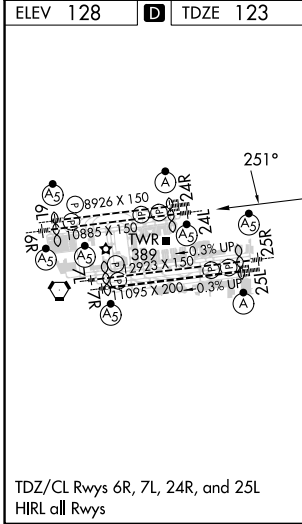
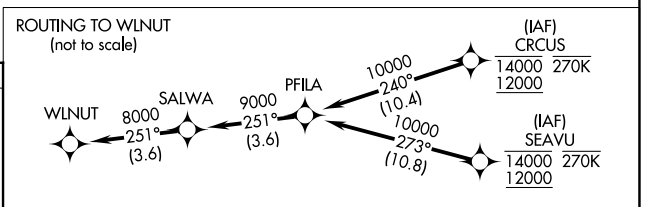
LOS ANGELES INTL (LAX)

RNP AR APCH.	MALSIR	MISSED APPROACH: Climb to 2000 on track 251° to JAKOS and track 263° to RAFFS and hold.
<p>Simultaneous approach authorized. Simultaneous approach authorized with HHR. For uncompensated Baro-VNAV systems, procedure NA below 5°C or above 54°C. For inop ALS, increase RNP 0.15 all Cats visibility to 1 3/8 SM.</p>		

D-ATIS	SOCAL APP CON	LOS ANGELES TOWER	GND CON	CLNC DEL	CPDLC
ARR <b>133.8</b>	<b>124.3 363.2</b> (APCH FM WEST)	<b>124.9 269.0</b> (090°-224°)	<b>N 121.65 327.0</b> <b>S 121.75 327.0</b> <b>W 121.4 327.0</b>	<b>120.35</b> <b>327.0</b>	
DEP <b>135.65</b>	<b>124.5 235.975</b> (225°-044°)	<b>128.5 360.7</b> (045°-089°)			



ELEV 128	<b>D</b>	TDZE 123
----------	----------	----------



2000	JAKOS	fr 263°	RAFFS	See planview for multiple IF locations.
tr 251°				
VGSi and RNAV glidepath not coincident (VGSi Angle 3.00/TCH 79).				
				GP 3.00° TCH 59

CATEGORY	A	B	C	D
RNP 0.15 DA		545/35	422 (500-5%)	
RNP 0.30 DA		592/45	469 (500-7%)	

TDZ/CL Rwy's 6R, 7L, 24R, and 25L  
HIRL all Rwy's

**AUTHORIZATION REQUIRED**

SW-3, 03 OCT 2024 to 31 OCT 2024

SW-3, 03 OCT 2024 to 31 OCT 2024