

SW-3, 03 OCT 2024 to 31 OCT 2024

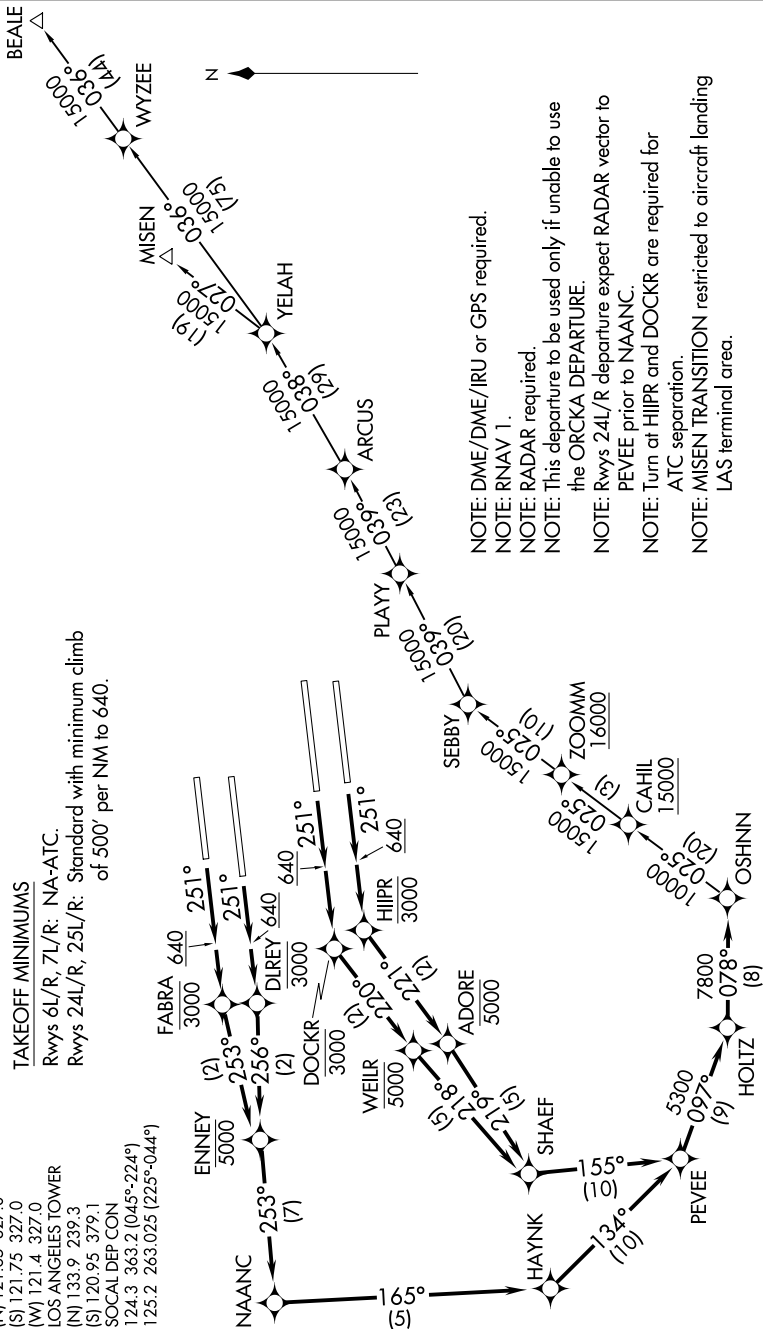
**TOP ALTITUDE:  
17000**

D-ATIS DEP  
135.65  
CLNC DEL  
120.35 327.0  
CPDLC  
GND CON  
(N) 121.65 327.0  
(S) 121.75 327.0  
(W) 121.4 327.0  
LOS ANGELES TOWER  
(N) 133.9 239.3  
(S) 120.95 379.1  
SOCAL DEP CON  
124.3 363.2 (045°-224°)  
125.2 263.025 (225°-044°)

**TAKEOFF MINIMUMS**

Rwys 6L/R, 7L/R: NA-ATC.

Rwys 24L/R, 25L/R: Standard with minimum climb of 500' per NM to 640.



NOTE: DME/DME/IRU or GPS required.

NOTE: RNAV 1.

NOTE: RADAR required.

NOTE: This departure to be used only if unable to use the ORCKA DEPARTURE.

NOTE: Rwys 24L/R departure expect RADAR vector to PEVEE prior to NAANC.

NOTE: Turn at HJIPR and DOCKR are required for ATC separation.

NOTE: MISEN TRANSITION restricted to aircraft landing LAS terminal area.

(NARRATIVE ON FOLLOWING PAGE)

NOTE: Chart not to scale.

SW-3, 03 OCT 2024 to 31 OCT 2024