

LOC/DME I-AS 111.1 Chan 48	APP CRS 071°	Rwy Idg 11259 11095 TDZE 128 128 Apt Elev 128 128
--	------------------------	---

ILS or LOC RWY 7L

LOS ANGELES INTL (LAX)

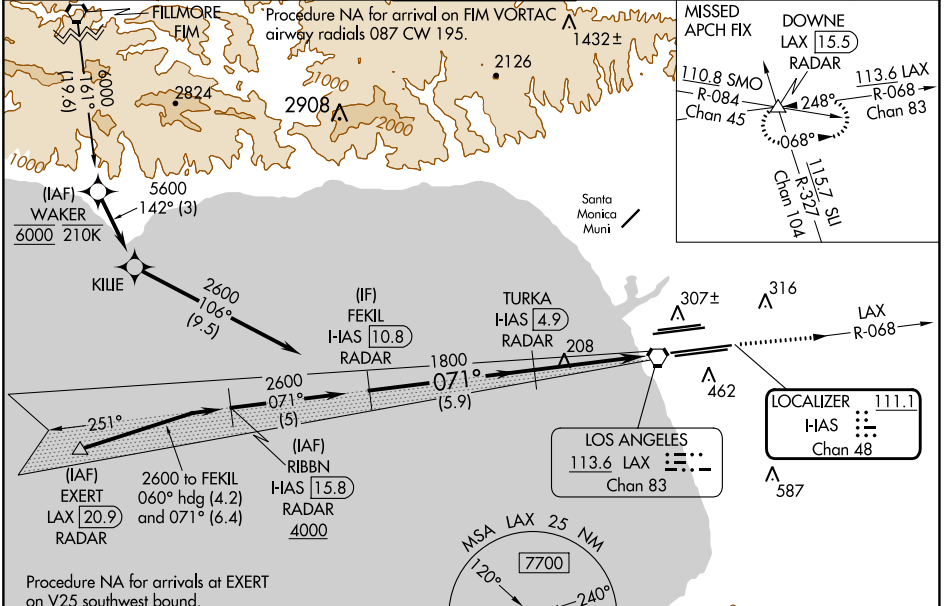
From FIM VORTAC: RNAV 1-GPS required. DME or RADAR required.

Simultaneous approach authorized. Autopilot coupled approach NA below 925. Inop table does not apply to Sidestep Rwy 7R Cats A and B.

MALS Rwy 7L MALS Rwy 7R

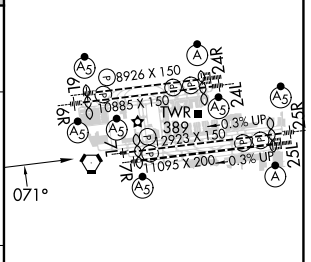
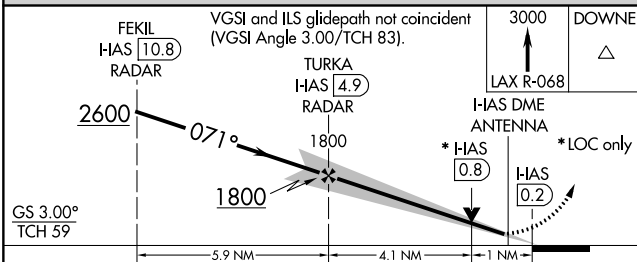
MISSED APPROACH: Climb to 3000 on LAX VORTAC R-068 to DOWNE INT/LAX 15.5 DME/RADAR and hold.

D-ATIS ARR 133.8 DEP 135.65	SOCAL APP CON 124.3 363.2 (APCH FM WEST) 124.5 235.975 (225°-044°)	124.9 269.0 (090°-224°) 128.5 360.7 (045°-089°)	LOS ANGELES TOWER N 133.9 239.3 S 120.95 379.1	GND CON N 121.65 327.0 S 121.75 327.0 W 121.4 327.0	CLNC DEL 120.35 327.0	CPDLC
---	--	--	--	---	---	-------



Procedure NA for arrivals at EXERT on V25 southwest bound.

ELEV 128	D TDZE 7L 128	TDZE 7R 128
----------	----------------------	-------------



CATEGORY	A	B	C	D
S-ILS 7L	336/18 208 (300-1/2)			
S-LOC 7L	520/24	392 (400-1/2)	520/35	392 (400-3/8)
SIDESTEP 7R	520/55 392 (400-1)			520-1 1/2 392 (400-1/2)
TDZ/CL Rwy 6R, 7L, 24R, and 25L HIRL all Rwy				
FAF to MAP 5.1 NM				
Knots	60	90	120	150 180
Min:Sec	5:06	3:24	2:33	2:02 1:42

SW-3, 03 OCT 2024 to 31 OCT 2024

SW-3, 03 OCT 2024 to 31 OCT 2024