

LOC/DME I-GPE <b>111.7</b> Chan <b>54</b>	APP CRS <b>071°</b>	Rwy ldg <b>6R</b> 9748 TDZE <b>116</b> Apt Elev <b>128</b>	<b>6L</b> 8566 <b>119</b> <b>128</b>
---	------------------------	--	---

# ILS or LOC RWY 6R

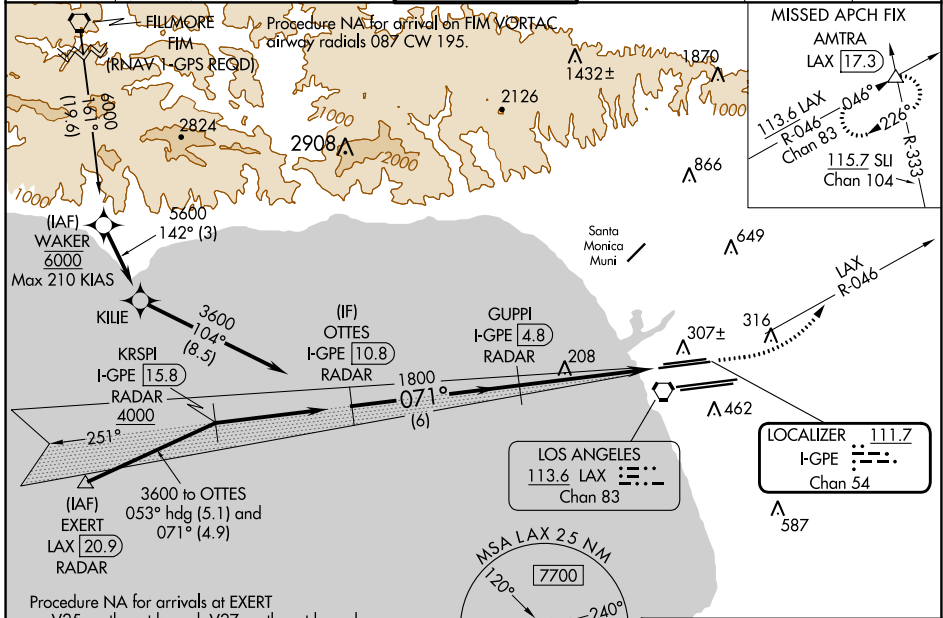
LOS ANGELES INTL (LAX)

Simultaneous approach authorized. For inop ALS, increase S-LOC 6R Cat C/D visibility to RVR 5500. Inop table does not apply to Sidestep 6L Cats A and B.  
# RVR 1800 authorized with use of FD or AP or HUD to DA.



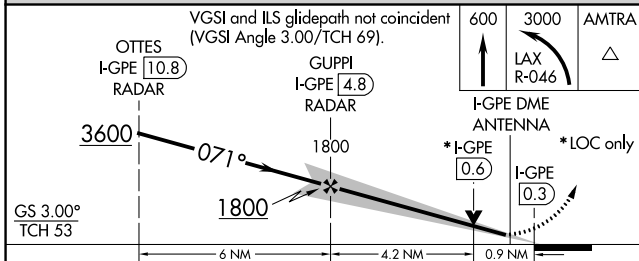
MISSED APPROACH: Climb to 600 then climbing left turn to 3000 on LAX VORTAC R-046 to AMTRA INT/ LAX 17.3 DME and hold.

D-ATIS ARR <b>133.8</b> DEP <b>135.65</b>	SOCAL APP CON <b>124.3 363.2 124.9 269.0</b> (APCH FM WEST) (090°-224°) <b>124.5 235.975 128.5 360.7</b> (045°-089°)	LOS ANGELES TOWER <b>N 133.9 239.3</b> <b>S 120.95 379.1</b>	GND CON <b>N 121.65 327.0</b> <b>S 121.75 327.0</b> <b>W 121.4 327.0</b>	CLNC DEL <b>120.35</b> <b>327.0</b>	CPDLC
---	---	--	---	---	-------

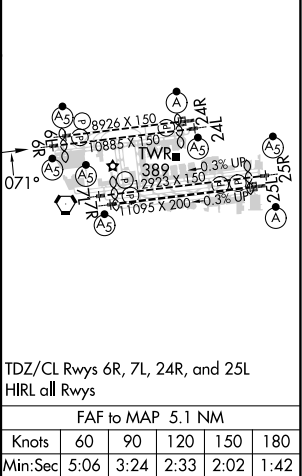


Procedure NA for arrivals at EXERT on V25 southwest bound, V27 northwest bound.

## DME or RADAR REQUIRED



ELEV 128	<b>D</b> TDZE 6R 116
	TDZE 6L 119



CATEGORY	A	B	C	D
S-ILS 6R#	316/24 200 (200-1/2)			
S-LOC 6R	460/24 344 (400-1/2)		460/30 344 (400-5/8)	
SIDESTEP 6L	460/55 341 (400-1)			460-1 1/2 341 (400-1/2)

TDZ/CL Rwy 6R, 7L, 24R, and 25L HIRL all Rwy	FAF to MAP 5.1 NM					
	Knots	60	90	120	150	180
	Min:Sec	5:06	3:24	2:33	2:02	1:42

SW-3, 11 JUL 2024 to 08 AUG 2024

SW-3, 11 JUL 2024 to 08 AUG 2024