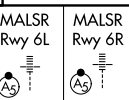


LOC/DME I-UWU 108.5 Chan 22	APP CRS 071°	Rwy ldg 6L 8566 TDZE 119 Apt Elev 128	6R 9748 116 128
---	------------------------	---	---

ILS or LOC RWY 6L

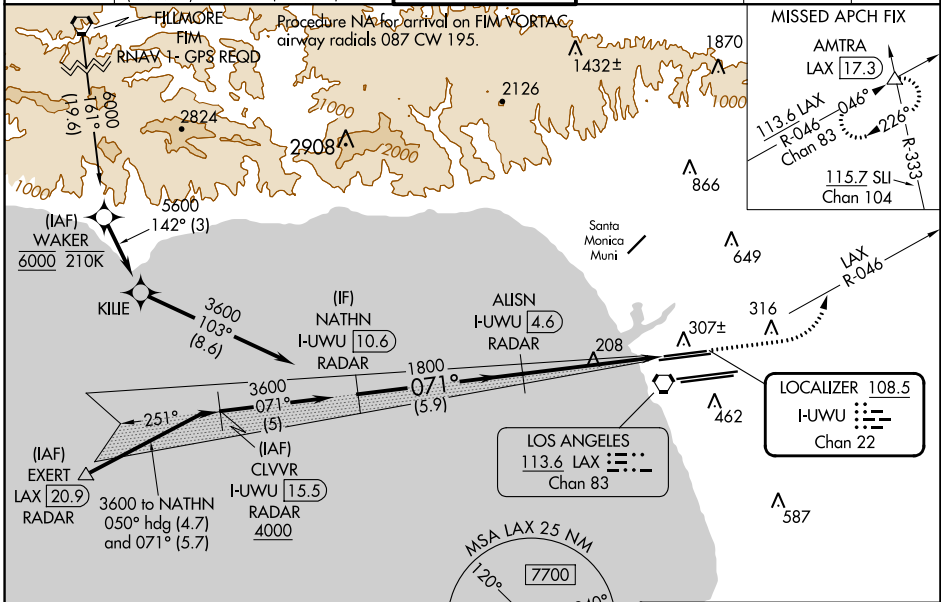
LOS ANGELES INTL (LAX)

▼ Inop table does not apply to Sidestep 6R Cats A/B. For inop ALS, increase S-LOC 6L Cat C/D visibility to RVR 5500. Simultaneous approach authorized. Autopilot coupled approach NA below 503.



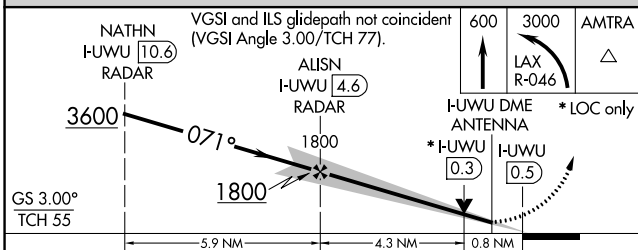
MISSED APPROACH: Climb to 600 then climbing left turn to 3000 on LAX VORTAC R-046 to AMTRA INT/LAX 17.3 DME and hold.

D-ATIS ARR 133.8 DEF 135.65	SOCAL APP CON 124.3 363.2 (APCH FM WEST) 124.5 235.975 (223°-044°)	124.9 269.0 (090°-224°) 128.5 360.7 (043°-089°)	LOS ANGELES TOWER N 133.9 239.3 S 120.95 379.1	GND CON N 121.65 327.0 S 121.75 327.0 W 121.4 327.0	CLNC DEL 120.35 327.0	CPDLC
---	--	--	--	---	---	-------



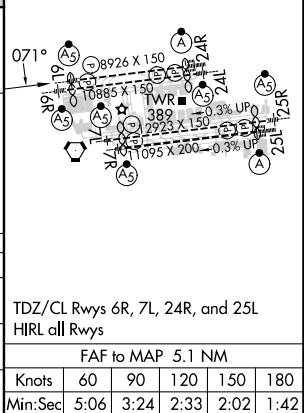
Procedure NA for arrivals at EXERT on V25 southwest bound, V27 northwest bound.

DME or RADAR REQUIRED



ELEV 128	D TDZE 6L 119
	TDZE 6R 116

CATEGORY	A	B	C	D
S-ILS 6L	369/24 250 (300-½)			
S-LOC 6L	460/24 341 (400-½)		460/30 341 (400-¾)	
SIDESTEP 6R	460/55 344 (400-1)			460-1½ 344 (400-1½)



TDZ/CL Rwy 6R, 7L, 24R, and 25L HIRL all Rwy	FAF to MAP 5.1 NM					
	Knots	60	90	120	150	180
	Min:Sec	5:06	3:24	2:33	2:02	1:42