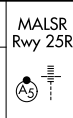


LOC/DME I-FCN 111.1 Chan 48	APP CRS 251°	Rwy ldg 1134	25R 11095	25L 11095
		TDZE 104	104	104
		Apt Elev 128	128	128

ILS or LOC RWY 25R

LOS ANGELES INTL (LAX)

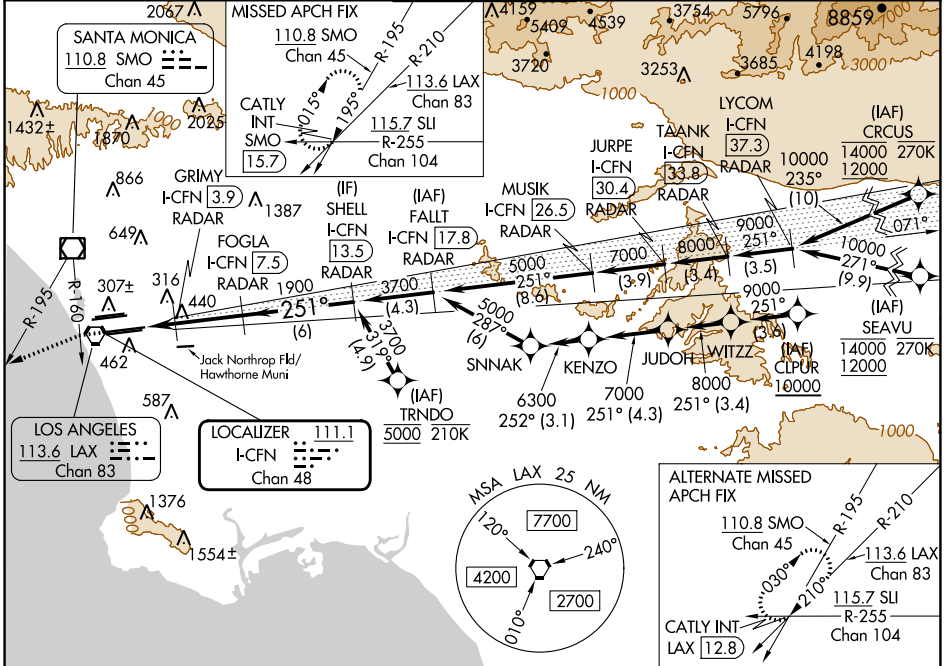
From CRCUS, SEAVU, TRNDO, CLPUR: RNAV 1-GPS required.
DME or RADAR required.



MISSED APPROACH: Climb to 2000 on heading 251° until crossing SMO R-160 then left turn on heading 236° and SMO VOR/DME R-195 to CATLY INT/SMO 15.7 DME and hold.

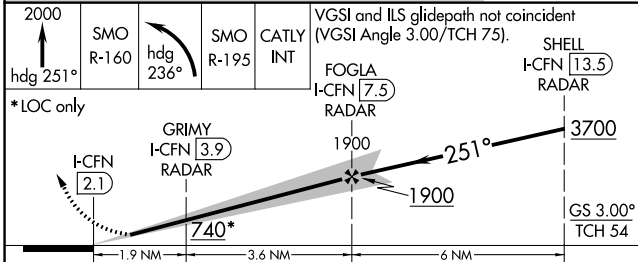
Simultaneous approach authorized. Simultaneous approach authorized with HHR. For inop ALS increase Sidestep 25L Cat C visibility to 1½ SM. #RVR 1800 authorized with use of FD or AP or HUD to DA.

D-ATIS ARR 133.8 DEP 135.65	SOCAL APP CON 124.3 363.2 <small>(ARCFM WEST)</small> 124.5 235.975 <small>(225°-044°)</small>	SOCAL APP CON 124.9 269.0 <small>(090°-224°)</small> 128.5 360.7 <small>(045°-089°)</small>	LOS ANGELES TOWER N 133.9 239.3 S 120.95 379.1	GND CON N 121.65 327.0 S 121.75 327.0 W 121.4 327.0	CLNC DEL 120.35 327.0	CPDLC
---	--	---	--	---	---	-------

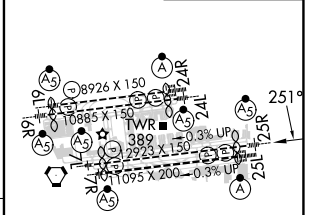


SW-3, 03 OCT 2024 to 31 OCT 2024

SW-3, 03 OCT 2024 to 31 OCT 2024



ELEV 128	TDZE 25R 104	TDZE 25L 104
----------	--------------	--------------



CATEGORY	A	B	C	D
S-ILS 25R#	304/24		200 (200-½)	
S-LOC 25R	700/24	596 (600-½)	700-1¼	596 (600-1¼)
SIDESTEP 25L	700/55	596 (600-1)	700-1¼	700-1½
			596 (600-1¼)	596 (600-1½)

TDZ/CL Rwyys 6R, 7L, 24R, and 25L	
HIRL all Rwyys	
FAF to MAP 5.5 NM	
Knots	60 90 120 150 180
Min:Sec	5:30 3:40 2:45 2:12 1:50