

LOC/DME I-OSS 108.5 Chan 22	APP CRS 251°	Rwy Idg 8926 9483 TDZE 122 123 Apt Elev 128 128
---	------------------------	---

ILS or LOC RWY 24R

LOS ANGELES INTL (LAX)

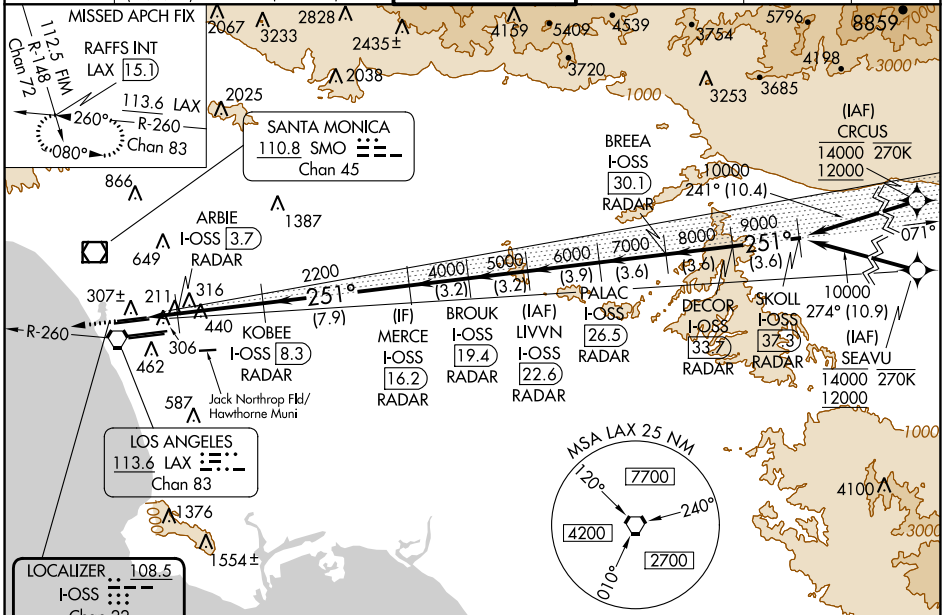
From CRCLC, SEAVU: RNAV 1-GPS required. DME or RADAR required.

Simultaneous approach authorized with HHR. LOC procedure NA during simultaneous operations with HHR LOC RWY 25. Simultaneous approach authorized. For inop ALS, increase S-LOC 24R Cat C/D visibility to RVR 5500.



MISSED APPROACH: Climb to 2000 on heading 251° and LAX VORTAC R-260 to RAFFS INT/LAX 15.1 DME and hold.

D-ATIS ARR 133.8 DEP 135.65	SOCAL APP CON 124.3 363.2 [APCH FM WEST] [225°-044°] 124.9 269.0 [090°-224°] 124.5 235.975 [045°-089°] 128.5 360.7	LOS ANGELES TOWER N 133.9 239.3 S 120.95 379.1	GND CON N 121.65 327.0 S 121.75 327.0 W 121.4 327.0	CLNC DEL 120.35 327.0	CPDLC
---	--	--	---	---	-------



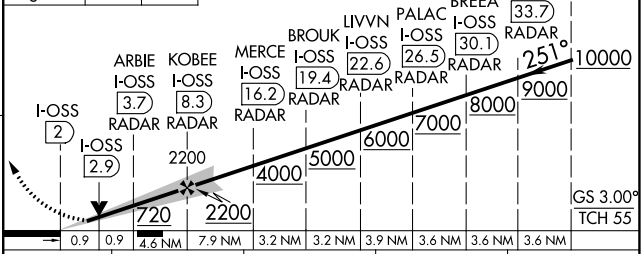
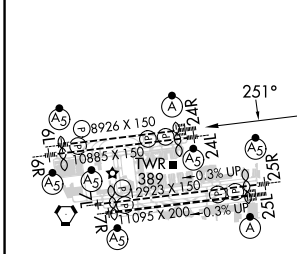
SW-3, 03 OCT 2024 to 31 OCT 2024

SW-3, 03 OCT 2024 to 31 OCT 2024

ELEV 128	TDZE 24R 122	TDZE 24L 123
-----------------	---------------------	---------------------

2000
↑
hdg 251°

VGSI and ILS glidepath not coincident (VGSI Angle 3.00/TCH 73).



TDZ/CL Rwy 6L, 7L, 24R, and 25L HIRL all Rwy	FAF to MAP 6.4 NM				
Knots Min:Sec	60 6:24	90 4:16	120 3:12	150 2:34	180 2:08
S-ILS 24R	322/18				200 (200-½)
S-LOC 24R	480/24		358 (400-½)		480/30 358 (400-¾)
SIDESTEP 24L	500/55			377 (400-1)	
				500-1½ 377 (400-1½)	