

LOC/DME I-OSS 108.5 Chan 22	APP CRS 251°	Rwy Idg 8926 TDZE 122 Apt Elev 128
---	------------------------	---

ILS RWY 24R (CAT II & III)

LOS ANGELES INTL (LAX)

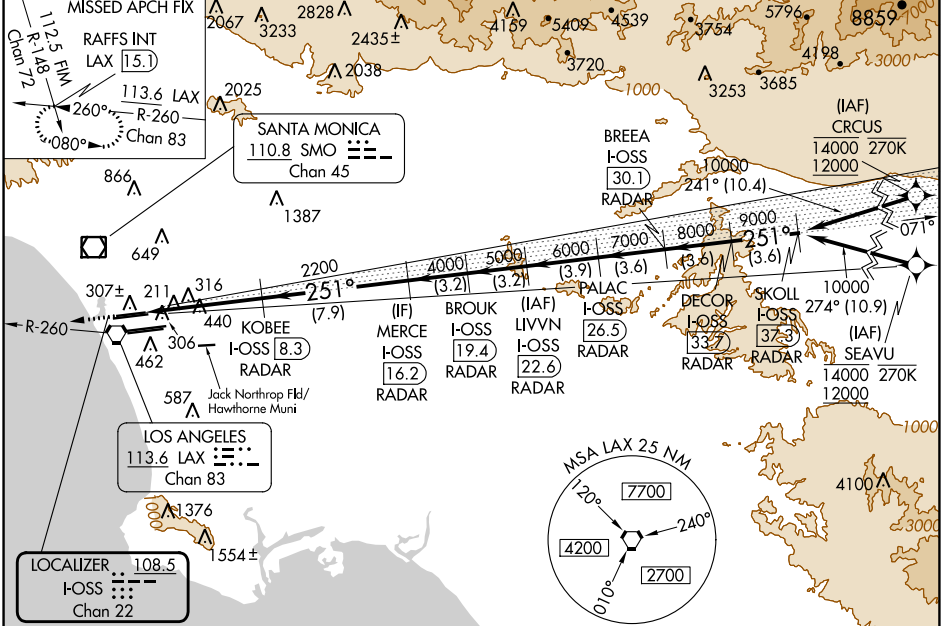
From CRUCS, SEAVU: RNAV 1-GPS required. DME or RADAR required.

Simultaneous approach authorized with HHR.
Simultaneous approach authorized.

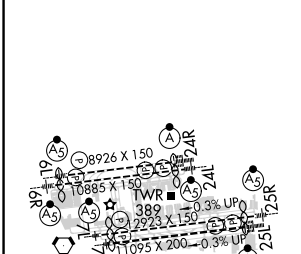
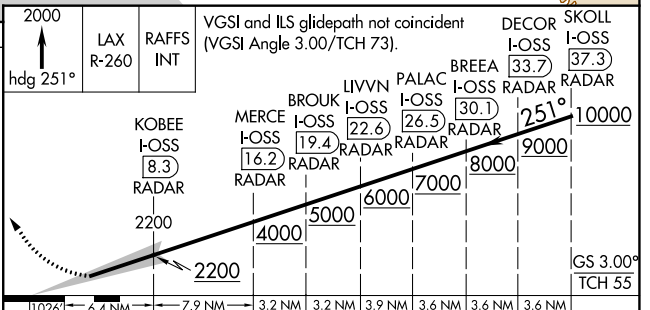


MISSED APPROACH: Climb to 2000 on heading 251° and LAX VORTAC R-260 to RAFFS INT/LAX 15.1 DME and hold.

D-ATIS ARR 133.8 DEP 135.65	SOCAL APP CON 124.3 363.2 124.9 269.0 (APCH FM WEST) (090°-224°) 124.5 235.975 128.5 360.7 (225°-044°) (045°-089°)	LOS ANGELES TOWER N 133.9 239.3 S 120.95 379.1	GND CON N 121.65 327.0 S 121.75 327.0 W 121.4 327.0	CLNC DEL 120.35 327.0	CPDLC
---	--	--	---	---	-------



ELEV 128	D TDZE 122
----------	-------------------



10227	6.4 NM	7.9 NM	3.2 NM	3.2 NM	3.9 NM	3.6 NM	3.6 NM	3.6 NM
CATEGORY	A	B	C	D				
S-ILS 24R	CAT II RA 118/12 100 DA 222							
S-ILS 24R	CAT III RVR 06							

CATEGORY II & III ILS - SPECIAL AIRCREW & AIRCRAFT CERTIFICATION REQUIRED

SW-3, 03 OCT 2024 to 31 OCT 2024

SW-3, 03 OCT 2024 to 31 OCT 2024