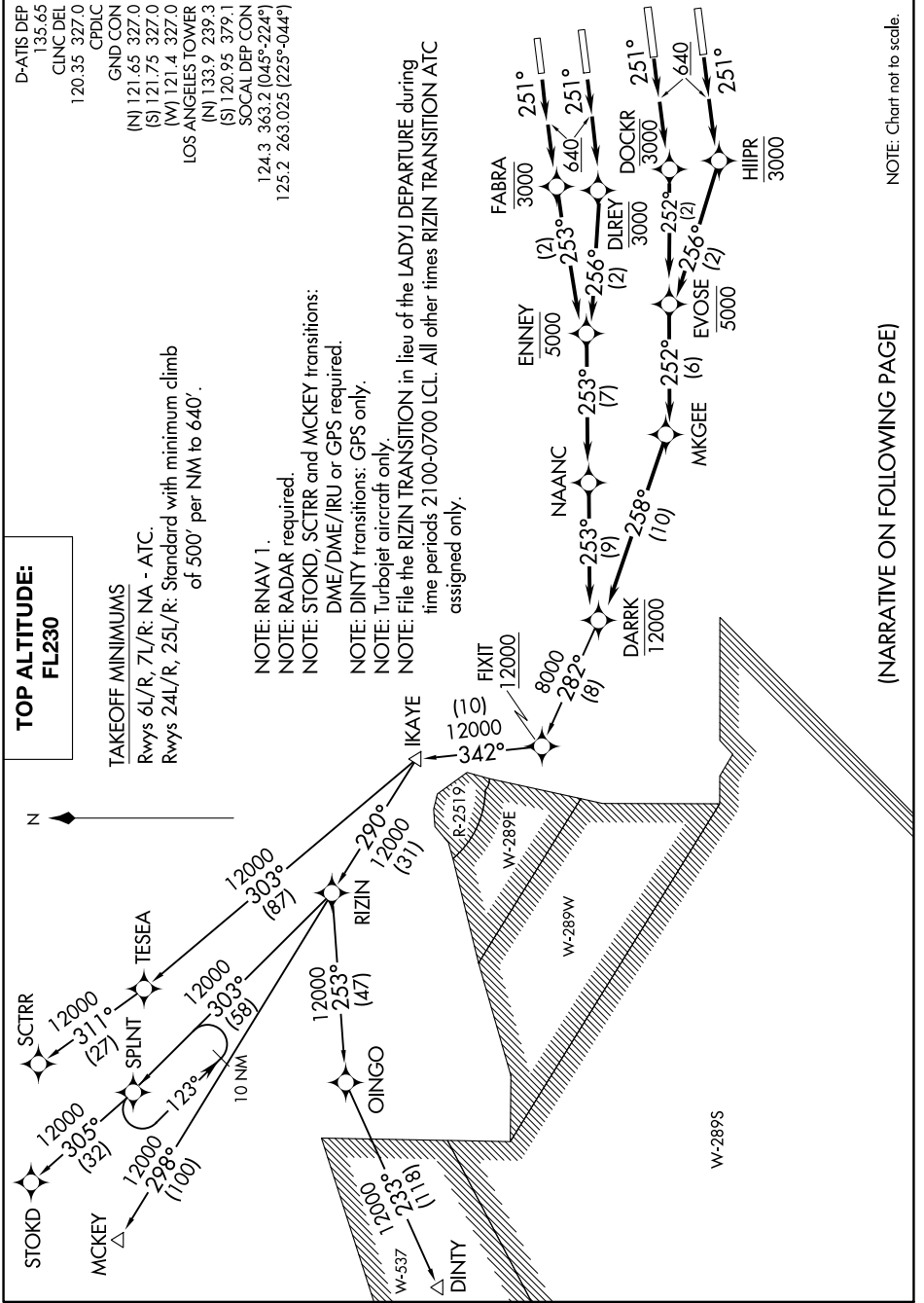


DARRK THREE DEPARTURE (RNAV)

AL-237 (FAA)

LOS ANGELES INTL (LAX)
LOS ANGELES, CALIFORNIA

SW-3, 03 OCT 2024 to 31 OCT 2024



TOP ALTITUDE:
FL230

TAKEOFF MINIMUMS
Rwys 6L/R, 7L/R: NA - ATC.
Rwys 24L/R, 25L/R: Standard with minimum climb
of 500' per NM to 640'.

NOTE: RNAV 1.
 NOTE: RADAR required.
 NOTE: SCTR, SCTR and MCKEY transitions:
 DME/DME/IRU or GPS required.
 NOTE: DINTY transitions: GPS only.
 NOTE: Turbojet aircraft only.
 NOTE: File the RIZIN TRANSITION in lieu of the LADYJ DEPARTURE during
 time periods 2100-0700 LCL. All other times RIZIN TRANSITION ATC
 assigned only.

D-ATIS DEP 135.65
 CLNC DEL 120.35 327.0
 CPDLC
 GND CON (N) 121.65 327.0
 (S) 121.75 327.0
 (W) 121.4 327.0
 LOS ANGELES TOWER (N) 133.9 239.3
 (S) 120.95 379.1
 SOCIAL DEP CON (S) 124.3 363.2 (045°-224°)
 125.2 263.025 (225°-044°)

(NARRATIVE ON FOLLOWING PAGE)

NOTE: Chart not to scale.

DARRK THREE DEPARTURE (RNAV)

LOS ANGELES, CALIFORNIA
LOS ANGELES INTL (LAX)

SW-3, 03 OCT 2024 to 31 OCT 2024