

(CHATY5.CHATY) 23334  
**CHATY FIVE DEPARTURE**

AL-237 (FAA)

LOS ANGELES INTL (LAX)  
 LOS ANGELES, CALIFORNIA

SW-3, 03 OCT 2024 to 31 OCT 2024

**TOP ALTITUDE:  
 ASSIGNED BY ATC**

SOCAL DEP CON  
 124.3 363.2 (045°-224°)  
 125.2 263.025 (225°-044°)  
 D-ATIS DEP  
 135.65  
 120.35 327.0  
 CINC DEL  
 120.35 327.0  
 CPDLC  
 GND CON  
 (N) 121.65 327.0  
 (S) 121.75 327.0  
 (W) 121.4 327.0  
 LOS ANGELES TOWER  
 (N) 133.9 239.3  
 (S) 120.95 379.1



GORMAN  
 116.1 GMN  
 Chan 108

SAN MARCUS  
 114.9 RZS  
 Chan 96

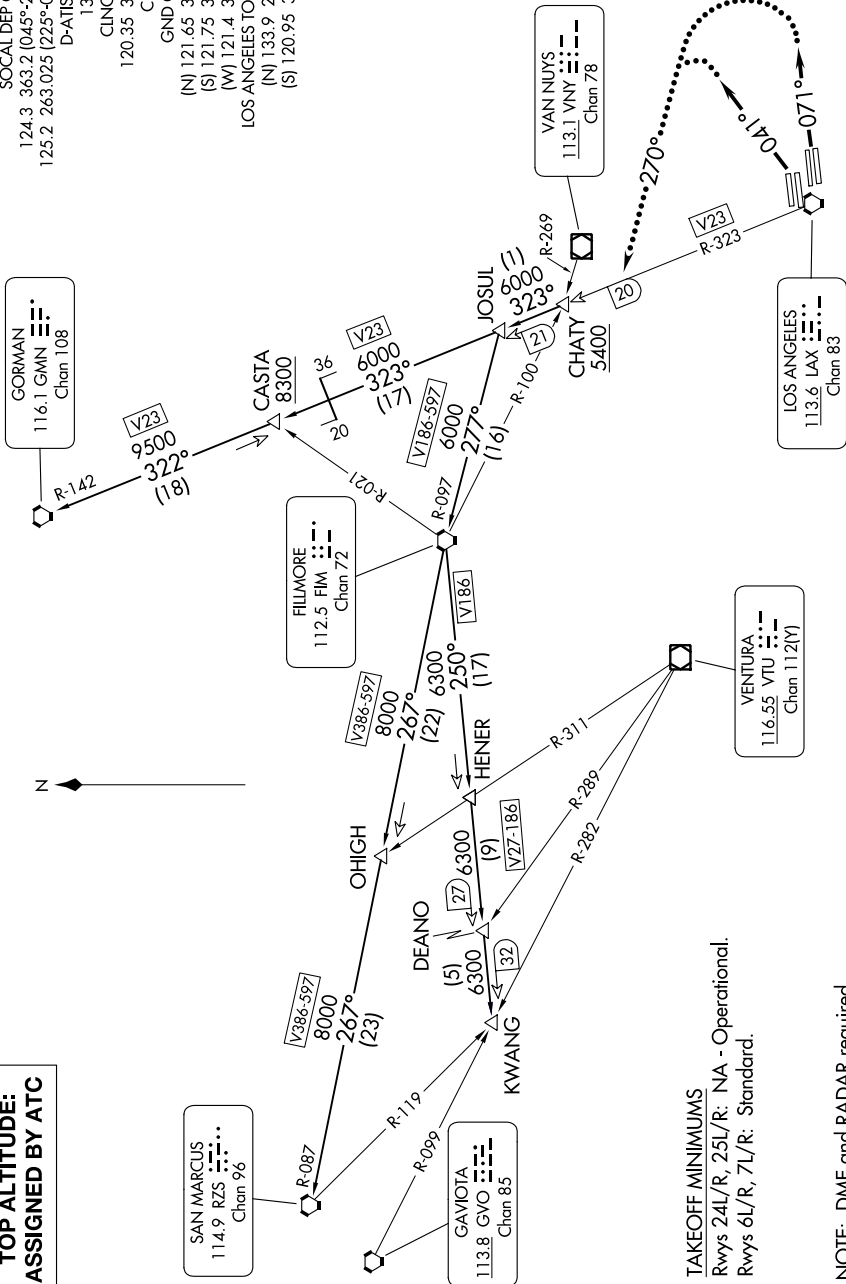
FILMORE  
 112.5 FIM  
 Chan 72

GAVIOTA  
 113.8 GVO  
 Chan 85

VANNIUNYS  
 113.1 VNY  
 Chan 78

VENTURA  
 116.55 VTU  
 Chan 112(Y)

LOS ANGELES  
 113.6 LAX  
 Chan 83



**TAKEOFF MINIMUMS**

Rwys 24L/R, 25L/R: NA - Operational.  
 Rwys 6L/R, 7L/R: Standard.

NOTE: DME and RADAR required.  
 NOTE: Procedure for non turbojet aircraft only.  
 NOTE: Chart not to scale.

(CONTINUED ON FOLLOWING PAGE)

SW-3, 03 OCT 2024 to 31 OCT 2024

(CHATY5.CHATY) 27APR17  
**CHATY FIVE DEPARTURE**

LOS ANGELES, CALIFORNIA  
 LOS ANGELES INTL (LAX)