

# ZOOMM THREE DEPARTURE (RNAV)

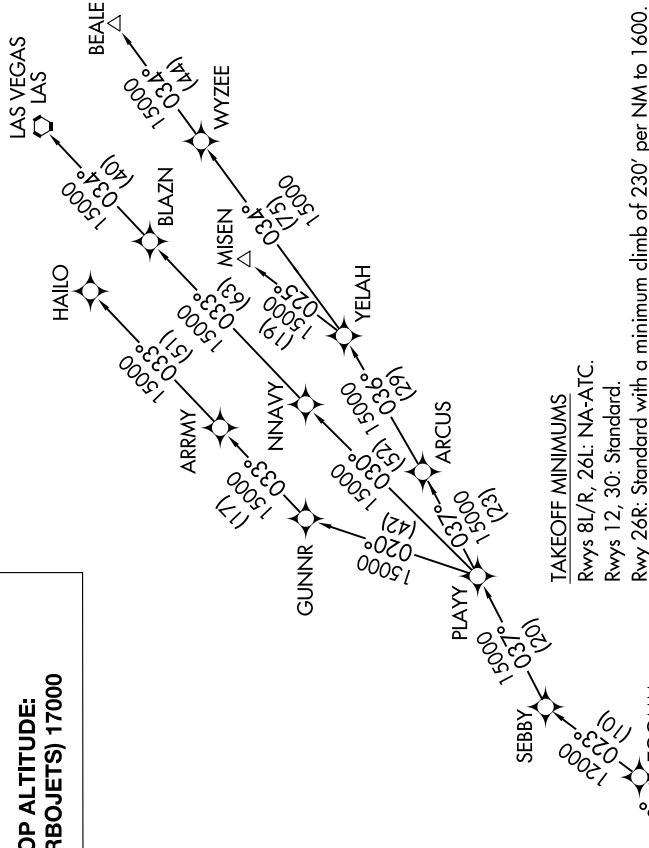
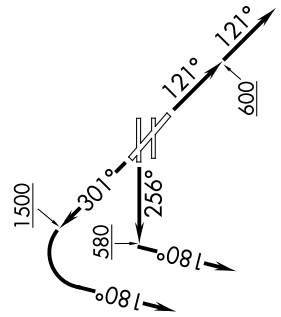
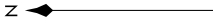
AL-236 (FAA)

LONG BEACH (DAUGHERTY FLD) (LGB)  
LONG BEACH, CALIFORNIA

SW-3, 31 OCT 2024 to 28 NOV 2024

**TOP ALTITUDE:  
(TURBOJETS) 17000**

ATIS 127.75  
 CINC DEL 118.15  
 GND CON 133.0, 257.6  
 SOCIAL DEP CON 125.35 316.125 (Rwy 12)  
 127.2 269.6 (Rwys 26R, 30)



**TAKEOFF MINIMUMS**

Rwys 8L/R, 26L: NA-ATC.

Rwys 12, 30: Standard.

Rwy 26R: Standard with a minimum climb of 230' per NM to 1600.

NOTE: RADAR required.

NOTE: RNAV 1

NOTE: DME/DME/IRU or GPS required.

NOTE: Turbojet only.

NOTE: MISEN TRANSITION restricted to aircraft landing LAS terminal area.

NOTE: HAILO/ LAS/ NNAV transitions ATC only.

(NARRATIVE ON FOLLOWING PAGE)

NOTE: Chart not to scale.

SW-3, 31 OCT 2024 to 28 NOV 2024

# ZOOMM THREE DEPARTURE (RNAV)