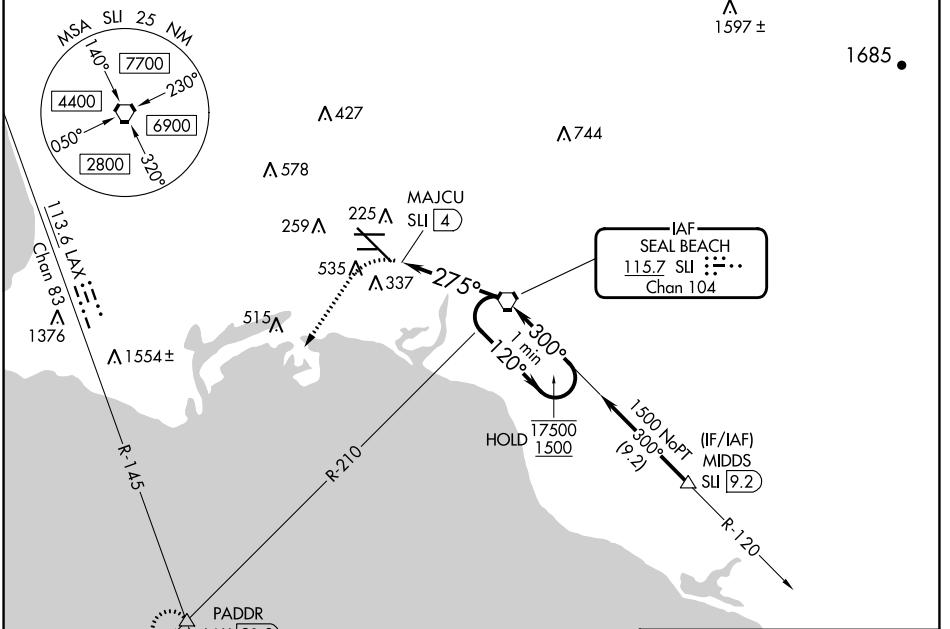


VORTAC SU 115.7 Chan 104	APP CRS 275°	Rwy ldg TDZE 38 Apt Elev 60	7414
--	------------------------	---	-------------

VOR or TACAN RWY 30

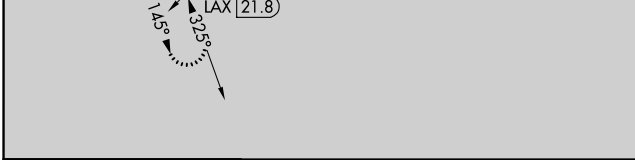
LONG BEACH (DAUGHERTY FLD) (LGB)

▽ △ Rwy 30 helicopter visibility reduction below RVR 4000 NA. Inop table does not apply.	MALSR 	MISSED APPROACH: Climbing left turn to 3000 on heading 200° and LAX VORTAC R-145 to PADDR INT/LAX 21.8 DME and hold.			
ATIS 127.75	SOCAL APP CON 125.35 316.125	LONG BEACH TOWER* 120.5 257.6 (Rwy 12) 119.4 (CTAF) 257.6 (Rwy 30)	GND CON 133.0 257.6	CLNC DEL 118.15	UNICOM 122.95



SW-3, 31 OCT 2024 to 28 NOV 2024

SW-3, 31 OCT 2024 to 28 NOV 2024



ELEV 60	D	TDZE 38
---------	----------	---------

0.4% DOWN
18°
0.3% UP
6192 X 150
26R
0.5% UP
3918 X 100
16L
275°
0.3% UP
AS
TWR 181

TDZ/CL Rwy 30
HIRL Rwy 12-30
HIRL Rwy 8R-26L
MIRL Rwy 8L-26R
REIL Rws 8R, 12, 26L, and 26R

FAF to MAP 4 NM

Knots	60	90	120	150	180
Min:Sec	4:00	2:40	2:00	1:36	1:20

CATEGORY	A	B	C	D
S-30	600/55 562 (600-1)	600-1 5/8 562 (600-1 1/8)	600-1 5/8 562 (600-1 1/8)	
C CIRCLING	840-1 780 (800-1)	840-2 1/4 780 (800-2 1/4)	840-2 1/2 780 (800-2 1/2)	