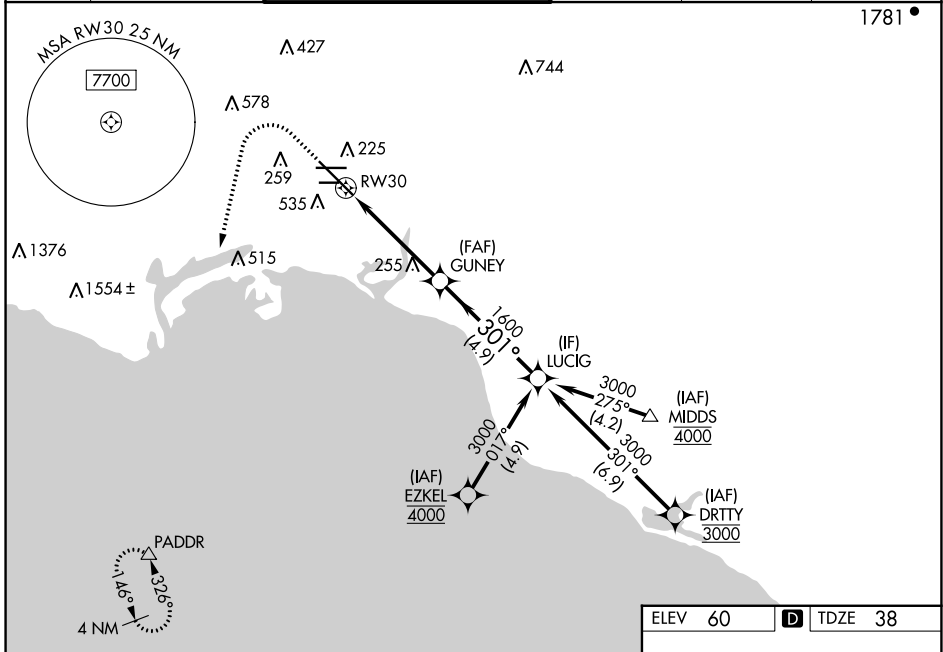


WAAS CH 99521 W30A	APP CRS 301°	Rwy Idg TDZE Apt Elev	7414 38 60
--	------------------------	-----------------------------	---------------------------------------

RNAV (GPS) Z RWY 30

LONG BEACH (DAUGHERTY FLD) (LGB)

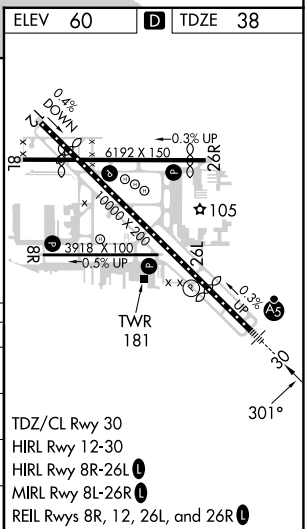
RNP APCH. ▼ For uncompensated Baro-VNAV systems, LNAV/VNAV NA below 4°C or above 54°C. For inop ALS, increase LNAV Cat C and D visibility to 1½ SM.		MALSR 	MISSED APPROACH: Climb to 800 then climbing left turn to 3000 direct PADDR and hold		
ATIS 127.75	SOCAL APP CON 125.35 316.125	LONG BEACH TOWER* 120.5 257.6 (Rwy 12) 119.4 (CTAF) 257.6 (Rwy 30)	GND CON 133.0 257.6	CLNC DEL 118.15	UNICOM 122.95



SW-3, 31 OCT 2024 to 28 NOV 2024

SW-3, 31 OCT 2024 to 28 NOV 2024

800	3000	PADDR	VGSI and RNAV glidepath not coincident (VGSI Angle 3.00/TCH 64).	
*LNAV only				
CATEGORY	A	B	C	D
LPV DA	261/18		223 (300-½)	
LNAV/VNAV DA	568/55		530 (600-1)	
LNAV MDA	520/24	482 (500-½)	520/50	482 (500-1)
C CIRCLING	840-1	780 (800-1)	840-1¾	780 (800-1¾)



TDZ/CL Rwy 30
HIRL Rwy 12-30
HIRL Rwy 8R-26L **L**
MIRL Rwy 8L-26R **L**
REIL Rws 8R, 12, 26L, and 26R **L**