

# ANAHEIM ONE DEPARTURE

AL-236 (FAA)

LONG BEACH (DAUGHERTY FLD) (LGB)  
LONG BEACH, CALIFORNIA

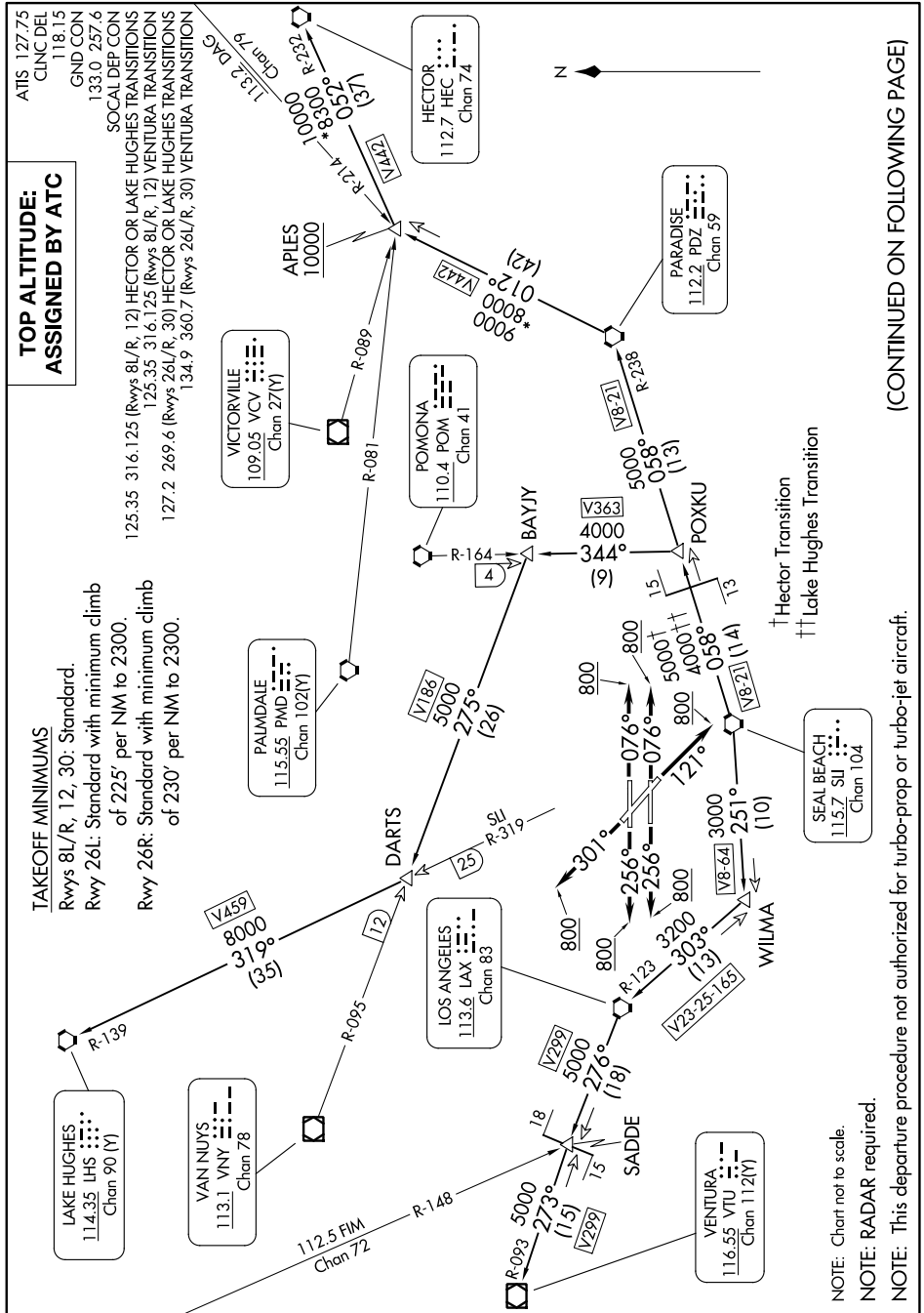
SW-3, 31 OCT 2024 to 28 NOV 2024

### TOP ALTITUDE: ASSIGNED BY ATC

### TAKEOFF MINIMUMS

Rwys 8/L/R, 12, 30: Standard.  
 Rwy 26L: Standard with minimum climb of 225' per NM to 2300.  
 Rwy 26R: Standard with minimum climb of 230' per NM to 2300.

ATIS 127.75  
 CLNC DEL 118.15  
 GND CON 133.0 257.6  
 SOCIAL DEP CON 125.35 316.125 (Rwys 8/L/R, 12) HECTOR OR LAKE HUGHES TRANSITIONS  
 125.35 316.125 (Rwys 8/L/R, 12) VENTURA TRANSITION  
 127.2 269.6 (Rwys 26L/R, 30) HECTOR OR LAKE HUGHES TRANSITIONS  
 134.9 360.7 (Rwys 26L/R, 30) VENTURA TRANSITION



NOTE: Chart not to scale.

NOTE: RADAR required.

NOTE: This departure procedure not authorized for turbo-prop or turbo-jet aircraft.

(CONTINUED ON FOLLOWING PAGE)

SW-3, 31 OCT 2024 to 28 NOV 2024