

WAAS CH 40137 W17A	APP CRS 177°	Rwy Idg TDZE Apt Elev	5400 1219 1219
--	------------------------	-----------------------------	---

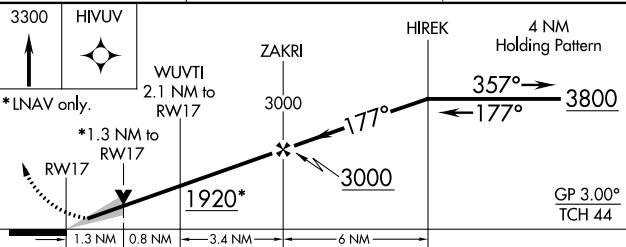
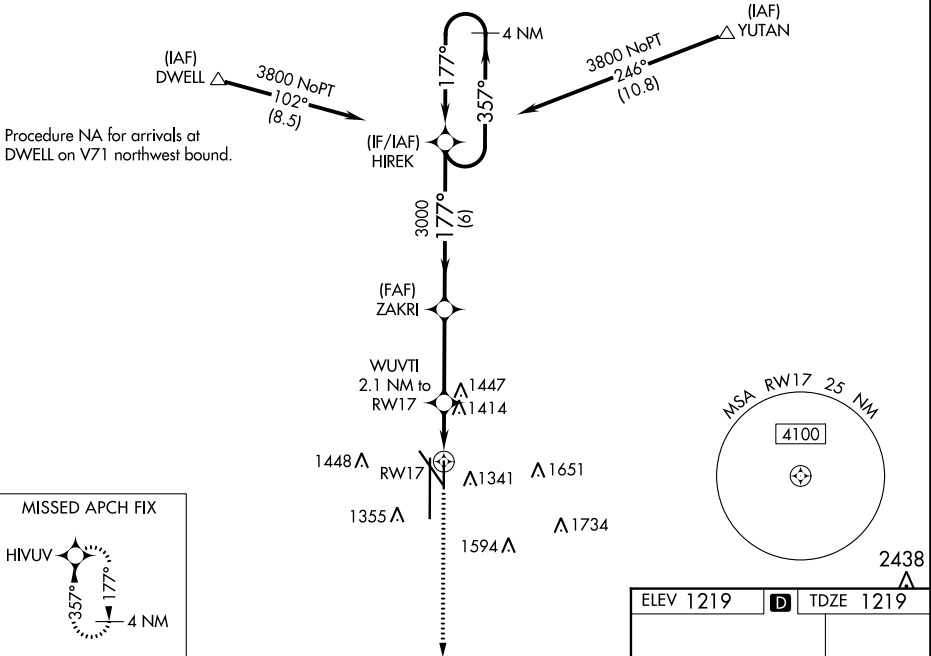
RNAV (GPS) RWY 17

LINCOLN (LNK)

Baro-VNAV NA when using Beatrice altimeter setting. For uncompensated Baro-VNAV systems, LNAV/VNAV NA below -22°C (-7°F) or above 54°C (130°F). DME/DME RNP-0.3 NA. When local altimeter setting not received, use Beatrice altimeter setting and increase all DA 91 feet, and all MDA 100 feet, increase LPV and LNAV/VNAV all Cats visibility ¼ mile, increase LNAV Cats C/D and Circling Cats C/D visibility ¼ mile.

MISSED APPROACH:
Climb to 3300 direct
HIVUV and hold.

ATIS 118.05 290.9	OMAHA APP CON 124.0 270.3	LINCOLN TOWER* 118.5 (CTAF) 253.5	GND CON 121.9 275.8	CLNC DEL 120.7 225.4	UNICOM 122.95
-----------------------------	-------------------------------------	---	-------------------------------	--------------------------------	-------------------------



CATEGORY	A	B	C	D
LPV DA		1419-3/4	200 (200-3/4)	
LNAV/VNAV DA		1615-13/8	396 (400-13/8)	
LNAV MDA	1680-1	461 (500-1)	1680-13/8	461 (500-13/8)
CIRCLING	1680-1 461 (500-1)	1760-1 541 (600-1)	1820-13/4 601 (700-13/4)	1960-21/2 741 (800-21/2)

