

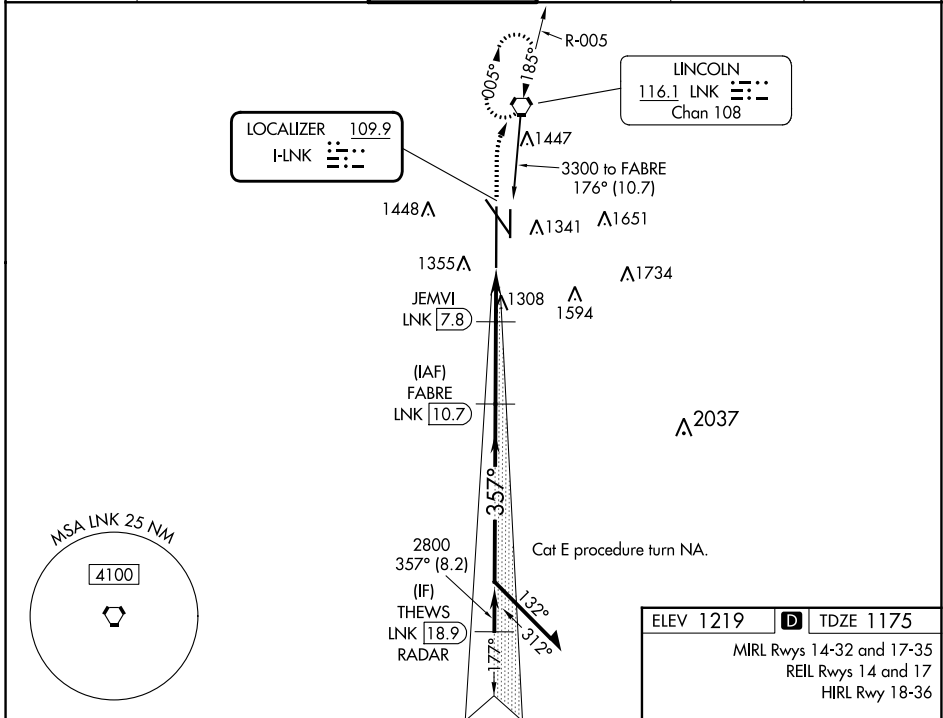
LOC I-LNK 109.9	APP CRS 357°	Rwy Idg 12901 TDZE 1175 Apt Elev 1219
---------------------------	------------------------	--

ILS Y or LOC Y RWY 36

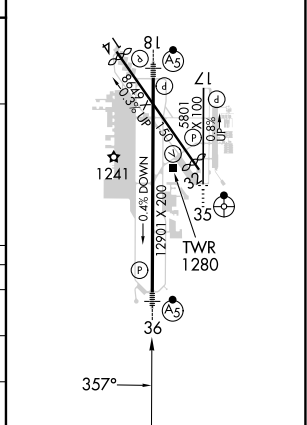
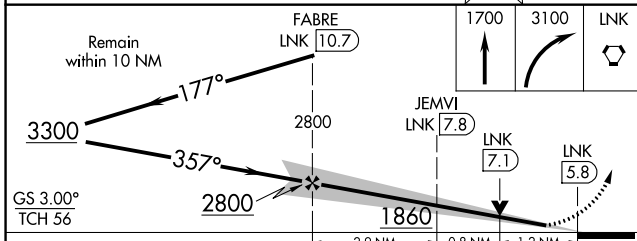
LINCOLN (LNK)

DME required. RADAR required for procedure entry at THEWS.		MALSR 	MISSED APPROACH: Climb to 1700 then climbing right turn to 3100 direct LNK VORTAC and hold, continue climb-in-hold to 3100.
<p>▽ For inop ALS, increase S-ILS 36 Cat E visibility to RVR 4000, ▲ S-LOC 36 Cat E visibility to 1 3/8 SM. DME from LNK VORTAC. DME use requires simultaneous reception of I-LNK and LNK DME. *RVR 1800 authorized with use of FD or AP or HUD to DA.</p>			

ATIS 118.05 290.9	OMAHA APP CON 124.0 270.3	LINCOLN TOWER * 118.5 (CTAF) 253.5	GND CON 121.9 275.8	CLNC DEL 120.7 225.4	UNICOM 122.95
-----------------------------	-------------------------------------	--	-------------------------------	--------------------------------	-------------------------



ELEV 1219	D TDZE 1175
MIRL Rwy 14-32 and 17-35 REIL Rwy 14 and 17 HIRL Rwy 18-36	



CATEGORY	A	B	C	D	E
S-ILS 36*	1375/24 200 (200-1/2)				
S-LOC 36	1620/24	445 (500-1/2)	1620/45 445 (500-7/8)		
CIRCLING	1680-1 461 (500-1)	1760-1 541 (600-1)	1820-1 3/4 601 (700-13/4)	1960-2 1/2 741 (800-2 1/2)	2040-3 821 (900-3)

NC-2, 11 JUL 2024 to 08 AUG 2024

NC-2, 11 JUL 2024 to 08 AUG 2024