

LINCOLN, NEBRASKA

# HI-VOR Z or TACAN RWY 18

VORTAC LNK <b>116.1</b> Chan <b>108</b>	APCH CRS <b>185°</b>	Rwy ldg <b>12,901</b> TDZE <b>1195</b> Arprt Elev <b>1219</b>
---	-------------------------	---

AL-232 [USAF]

LINCOLN (KLNK)

DME, RADAR required.

MALSR

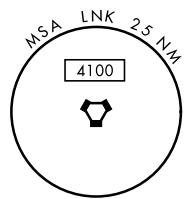
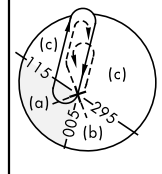
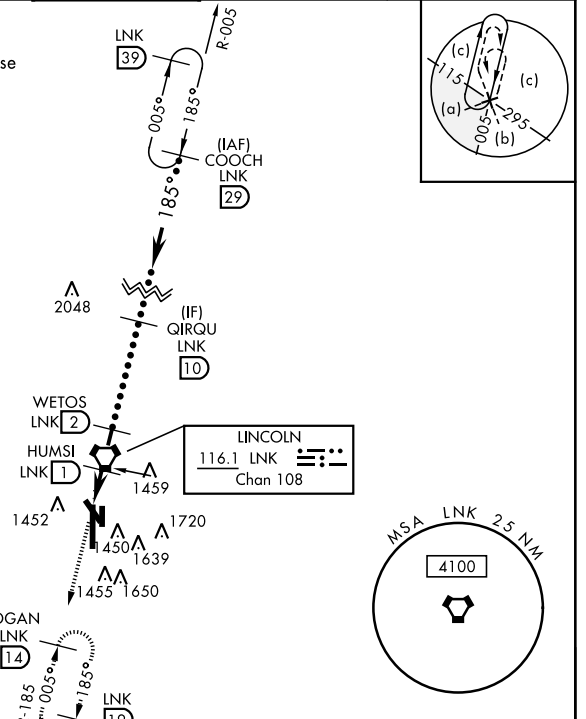


MISSED APPROACH: Climb to 3300 via LNK  
VORTAC R-185 to JOGAN 14 DME and hold.

ATIS <b>118.05 290.9</b>	OMAHA APP CON <b>124.0 270.3</b>	TOWER★ <b>118.5 253.5</b>	GND CON <b>121.9 275.8</b>	CLNC DEL <b>120.7 225.4</b>
-----------------------------	-------------------------------------	------------------------------	-------------------------------	--------------------------------

Inoperative table does not apply.

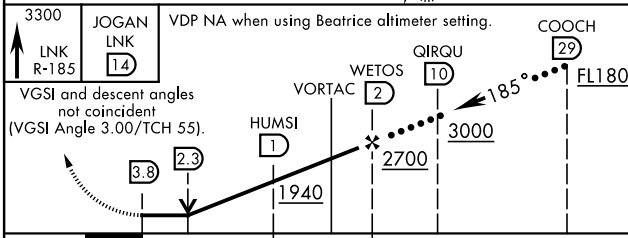
When local altimeter setting not received use  
Beatrice altimeter setting.



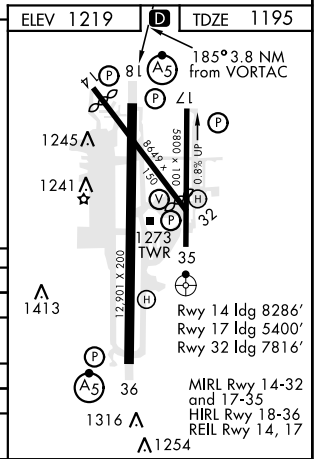
NC-2, 11 JUL 2024 to 08 AUG 2024

NC-2, 11 JUL 2024 to 08 AUG 2024

EMERG SAFE ALT 100 NM 4800



CATEGORY	C	D	E
S-18	1760-1½	1720-1½	525 (600-1½)
CIRCLING	541 (600-1½)	601 (700-2)	821 (900-3)
BEATRICE ALTIMETER SETTING			
S-18	1860-1½	1820-1¾	625 (700-1¾)
CIRCLING	641 (700-1½)	701 (800-2¼)	921 (1000-3¼)



LINCOLN, NEBRASKA

40°51'N-96°46'W

LINCOLN (KLNK)

Amdt 5A 04NOV21

# HI-VOR Z or TACAN RWY 18