

# HI-ILS Z or LOC Z RWY 36

LOC I-LNK <b>109.9</b>	APCH CRS <b>357°</b>	Rwy Idg <b>12,901</b> TDZE <b>1175</b> Arprt Elev <b>1219</b>	[USAF]	LINCOLN (KLNK)
---------------------------	-------------------------	---	--------	----------------

DME required

\* When ALS inop, increase RVR to 40, vis to ¾ mile.  
 \*\* When ALS inop, increase vis to 1½ miles.  
 \*\*\* When ALS inop, increase RVR to 45, vis to ⅞ mile.

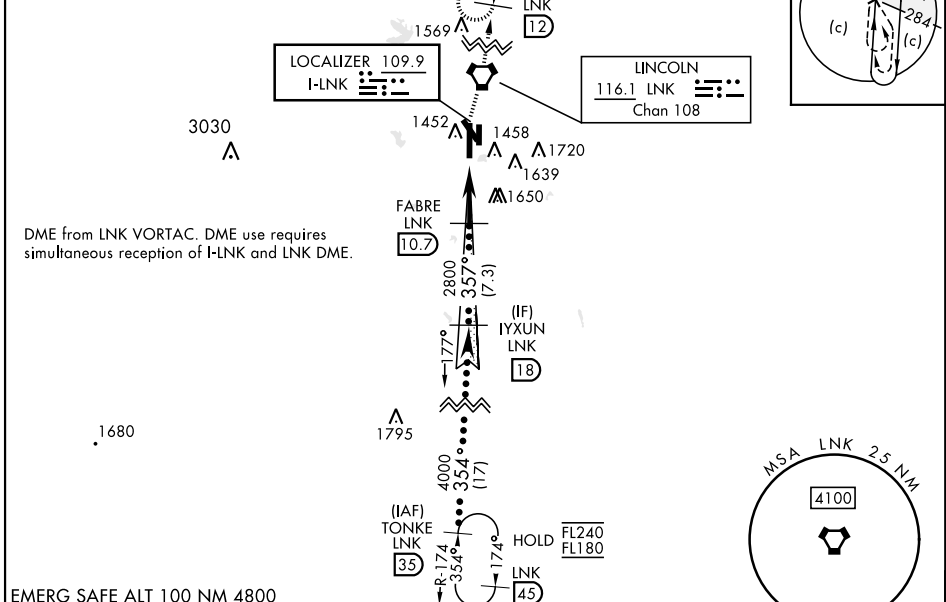
MALSRL (A5)

MISSED APPROACH: Climb to 1700 then climbing right turn to 3000 direct LNK VORTAC and on LNK R-360 to BUMBE 12 DME and hold.

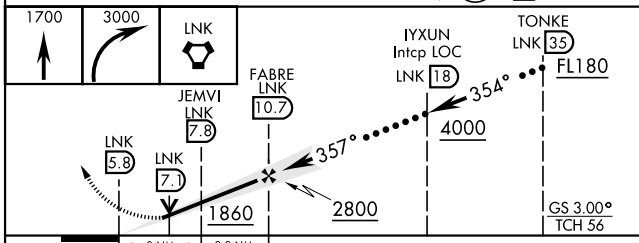
ATIS <b>118.05 290.9</b>	OMAHA APP CON <b>124.0 270.3</b>	TOWER ★ <b>118.5 253.5</b>	GND CON <b>121.9 275.8</b>	CLNC DEL <b>120.7 225.4</b>
-----------------------------	-------------------------------------	-------------------------------	-------------------------------	--------------------------------

† When ALS inop, increase vis to 1½ miles.

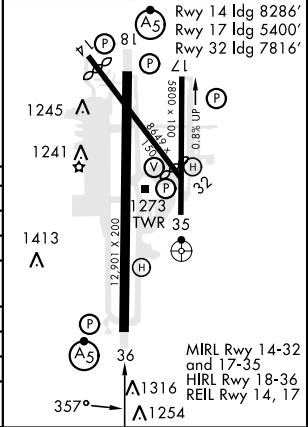
When local altimeter setting not received use Beatrice altimeter setting.



EMERG SAFE ALT 100 NM 4800



ELEV	1219	TDZE	1175
------	------	------	------



CATEGORY	C	D	E
S-ILS 36 *	1375/24	200	(200-½)
S-LOC 36 **	1620/45	445	(500-⅞)
CIRCLING	1820-1½ 601 (700-1½)	1960-2¼ 741 (800-2¼)	2040-3 821 (900-3)
BEATRICE ALTIMETER SETTING			
S-ILS 36 ***	1466/24	291	(300-½)
S-LOC 36 †	1720/60	545	(600-1½)
CIRCLING	1920-2 601 (700-2)	2060-2¾ 741 (800-2¾)	2140-3¼ 921 (1000-3¼)

# HI-ILS Z or LOC Z RWY 36

NC-2, 08 AUG 2024 to 05 SEP 2024

NC-2, 08 AUG 2024 to 05 SEP 2024