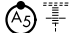


HI-ILS Z or LOC Z RWY 18

LOC I-OCZ 111.1	APCH CRS 177°	Rwy Idg 12,901 TDZE 1195 Arprt Elev 1219	AL-232 [USAF]	LINCOLN (KLNK)
---------------------------	-------------------------	---	---------------	----------------

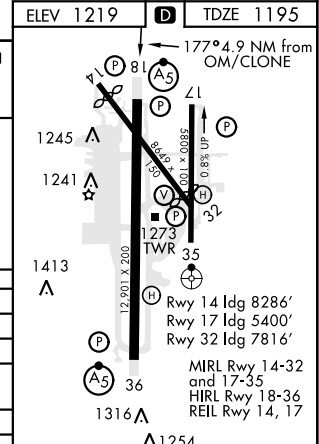
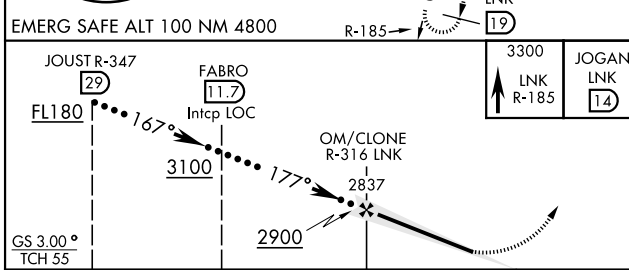
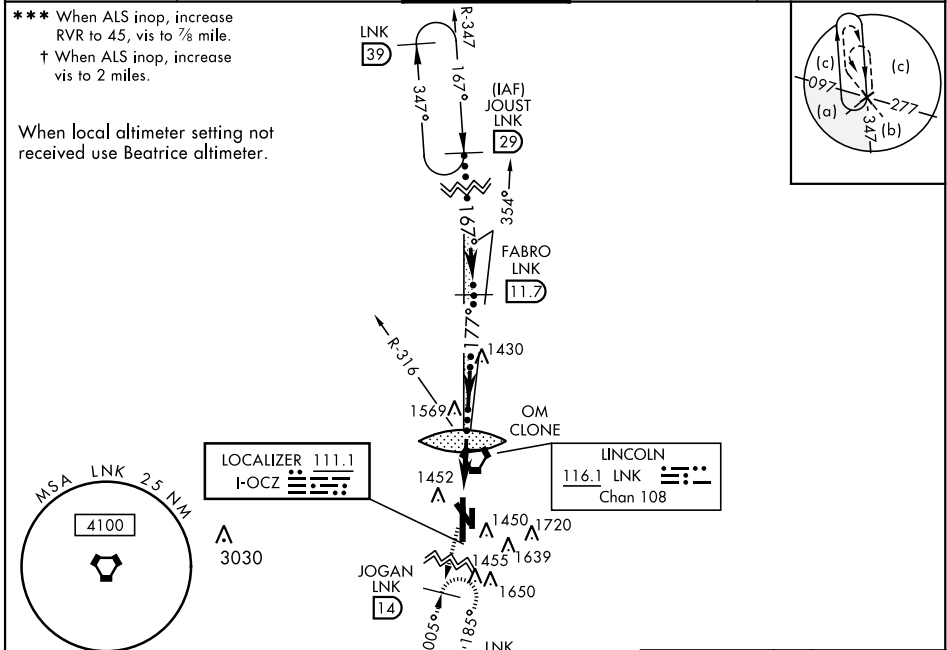
DME, RADAR required for procedure entry.

MALS  MISSED APPROACH: Climb to 3300 on LNK VORTAC R-185 to JOGAN (LNK 14 DME) and hold.

ATIS **118.05 290.9** **OMAHA APP CON** **124.0 270.3** **TOWER*** **118.5 253.5** **GND CON** **121.9 275.8** **CLNC DEL** **120.7 225.4**

******* When ALS inop, increase RVR to 45, vis to ¾ mile.
† When ALS inop, increase vis to 2 miles.

When local altimeter setting not received use Beatrice altimeter.



CATEGORY	C	D	E
S-ILS 18*	1395/24	200	(200-½)
S-LOC 18**	1820-1 ¾	625	(700-1 ¾)
CIRCLING	1820-1 ¾	1820-2	2040-3
	601 (700-1 ¾)	601 (700-2)	821 (900-3)
BEATRICE ALTIMETER SETTING			
S-ILS 18***	1486/24	291	(200-½)
S-LOC 18 †	1920-1 ¾	725	(800-1 ¾)
CIRCLING	1920-2	1920-2 ¼	2140-3 ¼
	701 (800-2)	701 (800-2 ¼)	921 (1000-3 ¼)

FAF to MAP 4.9 NM					
Knots	120	140	160	180	200
Min:Sec	2:27	2:06	1:50	1:38	1:28

HI-ILS Z or LOC Z RWY 18

NC-2, 11 JUL 2024 to 08 AUG 2024

NC-2, 11 JUL 2024 to 08 AUG 2024

