

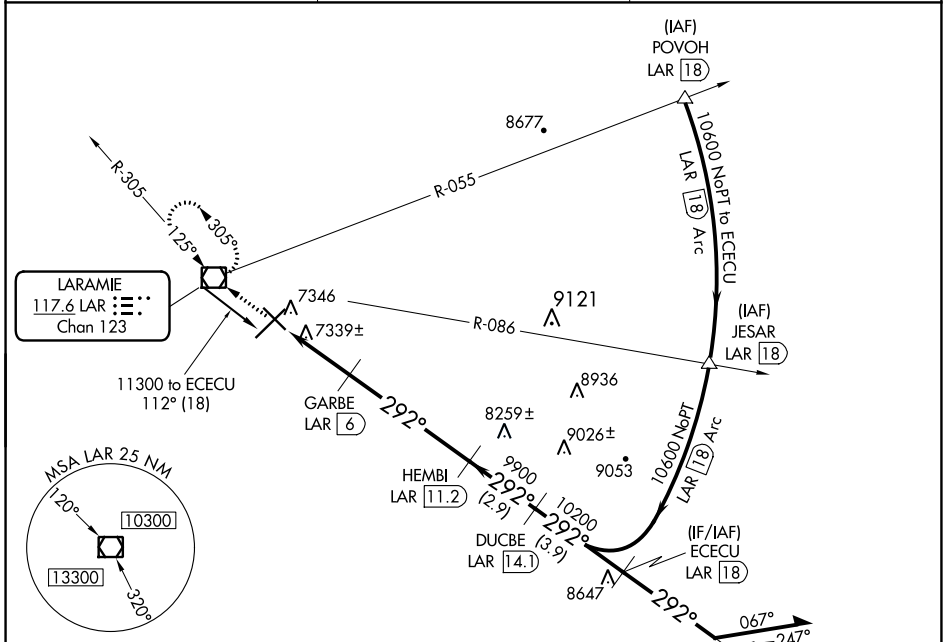
VOR/DME LAR 117.6 Chan 123	APP CRS 292°	Rwy Idg TDZE Apt Elev 6300 7278 7284
---	------------------------	---

VOR/DME RWY 30

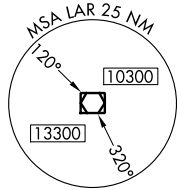
LARAMIE RGNL (L.A.R.)

	ODALS	MISSED APPROACH: Climb to 9600 direct LAR VOR/DME and hold, continue climb-in-hold to 9600.

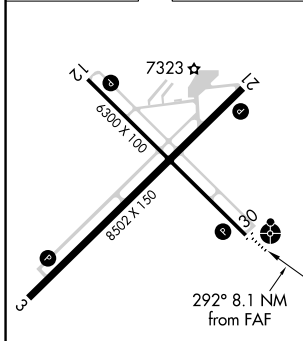
ASOS 135.475	DENVER CENTER 125.9 284.7	UNICOM 123.05 (CTAF)
------------------------	-------------------------------------	--------------------------------



LARAMIE
117.6 LAR
Chan 123



ELEV 7284	D	TDZE 7278
-----------	---	-----------



9600	LAR	ECECU LAR 18	Remain within 10 NM
↑	☐		
	LAR 4	GARBE LAR 6	HEMBI LAR 11.2
	LAR 3.1	LAR 6	LAR 11.2
	8220	9900	10200
	0.9	2 NM	5.2 NM
			2.9 NM
			3.9 NM

CATEGORY	A	B	C	D
S-30	7600-¾ 322 (400-¾)			7600-1 322 (400-1)
CIRCLING	7660-1 376 (400-1)	7760-1 476 (500-1)	7880-1½ 596 (600-1½)	7920-2 636 (700-2)

NW-1, 26 JAN 2023 to 23 FEB 2023

NW-1, 26 JAN 2023 to 23 FEB 2023