

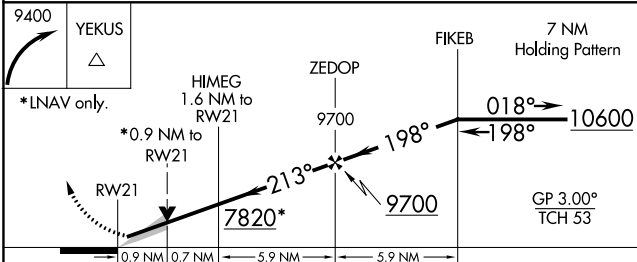
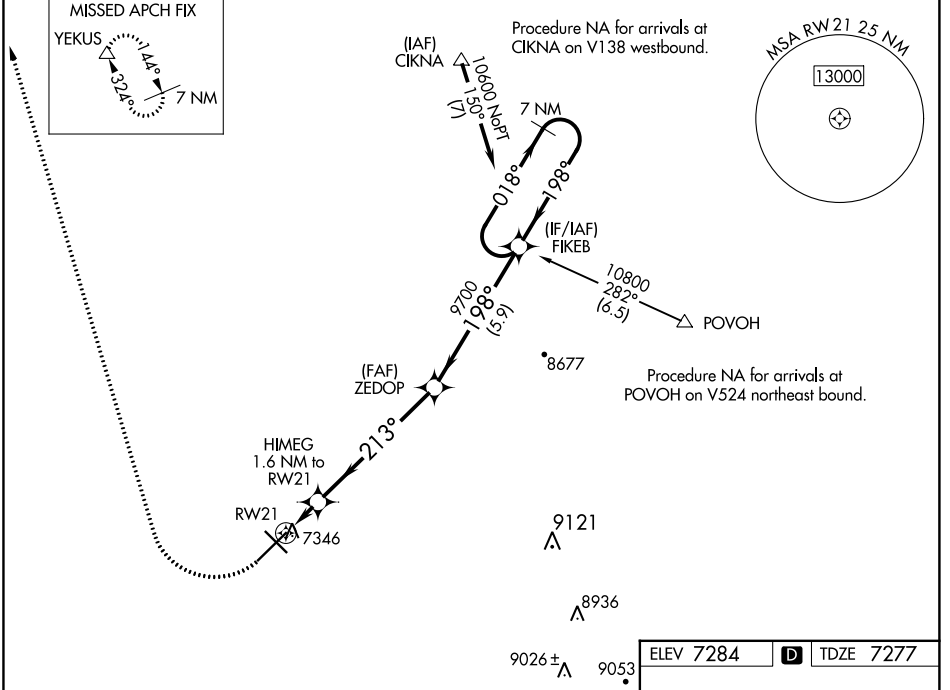
WAAS CH <b>72825</b> <b>W21A</b>	APP CRS <b>213°</b>	Rwy Idg TDZE Apt Elev	<b>8502</b> <b>7277</b> <b>7284</b>
--	------------------------	-----------------------------	---

# RNAV (GPS) RWY 21

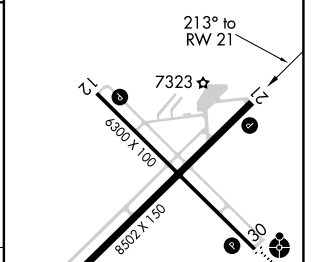
LARAMIE RGNL (L.A.R.)

<p>Circling to Rwy 30 NA at night. Baro-VNAV NA. DME/DME RNP-0.3 NA.</p>	<p>MISSED APPROACH: Climbing right turn to 9400 direct YEKUS and hold.</p>
--	--

ASOS <b>135.475</b>	DENVER CENTER <b>125.9 284.7</b>	UNICOM <b>123.05</b> (CTAF)
------------------------	-------------------------------------	--------------------------------



ELEV 7284		TDZE 7277
-----------	--	-----------



CATEGORY	A	B	C	D
LPV DA		7527-3/4	250 (300-3/4)	
LNAV/VNAV DA		7527-3/4	250 (300-3/4)	
LNAV MDA		7600-1	323 (400-1)	
CIRCLING	7660-1 376 (400-1)	7760-1 476 (500-1)	7880-1 1/2 596 (600-1 1/2)	7920-2 636 (700-2)

REIL Rwy 3, 12 and 21

MIRL Rwy 3-21 and 12-30

NW-1, 26 JAN 2023 to 23 FEB 2023

NW-1, 26 JAN 2023 to 23 FEB 2023