

WAAS CH <b>61314</b> <b>W10A</b>	APP CRS <b>096°</b>	Rwy Idg TDZE Apt Elev	<b>8506</b> <b>861</b> <b>861</b>
--	------------------------	-----------------------------	---

# RNAV (GPS) RWY 10R

CAPITAL REGION INTL (LAN)

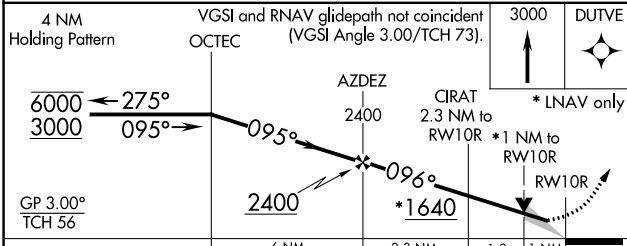
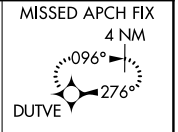
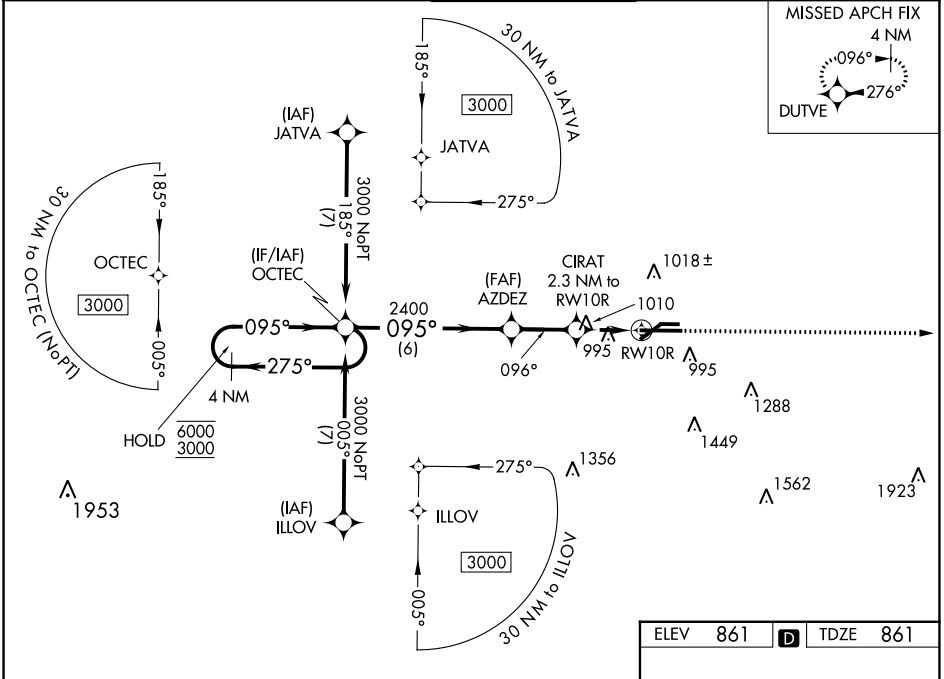
RNP APCH.

**▼** Circling Rwy 10L, 28R NA at night. For uncompensated Baro-VNAV systems, LNAV/VNAV NA below -19°C or above 54°C. For inop ALS, increase LNAV/VNAV all Cats visibility to RVR 4500. \*\* RVR 1800 authorized with use of FD or AP or HUD to DA.

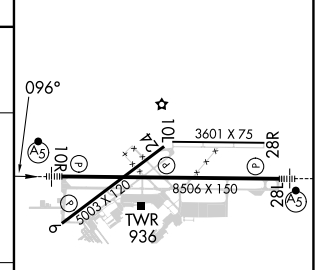


MISSED APPROACH:  
Climb to 3000 direct  
DUTVE and hold.

ATIS <b>119.75</b>	GREAT LAKES APP CON ★ <b>118.65 226.4</b>	LANSING TOWER <b>119.9 240.9</b>	GND CON <b>121.9</b>	CLNC DEL <b>123.675</b>
-----------------------	--	-------------------------------------	-------------------------	----------------------------



ELEV	861	<b>D</b>	TDZE	861
------	-----	----------	------	-----



CATEGORY	A	B	C	D
LPV DA **	1061/24		200 (200-½)	
LNAV/VNAV DA	1172/24		311 (400-½)	
LNAV MDA	1260/24	399 (400-½)	1260/35	399 (400-¾)
<b>C</b> CIRCLING	1320-1 459 (600-1)	1380-1 519 (600-1)	1600-2 739 (800-2)	1760-3 899 (900-3)

MIRL Rwy 6-24  
HIRL Rwy 10R-28L  
REIL Rwy 6 and 24

EC-1, 31 OCT 2024 to 28 NOV 2024

EC-1, 31 OCT 2024 to 28 NOV 2024