

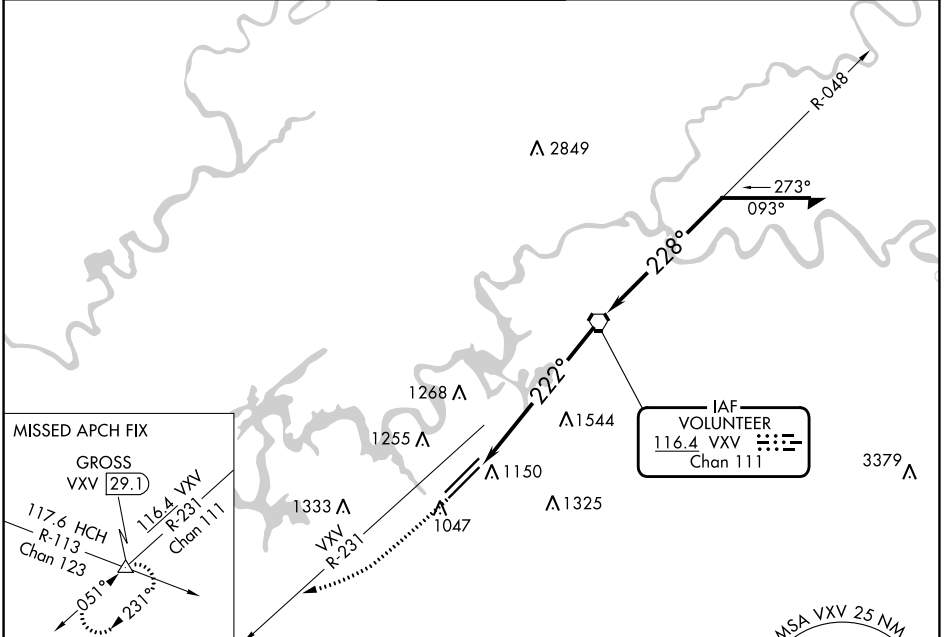
VOR/DME VVX <b>116.4</b> Chan <b>111</b>	APP CRS <b>222°</b>	Rwy Idg TDZE Apt Elev	<b>8600</b> <b>965</b> <b>986</b>
--	------------------------	-----------------------------	---

# VOR RWY 23L

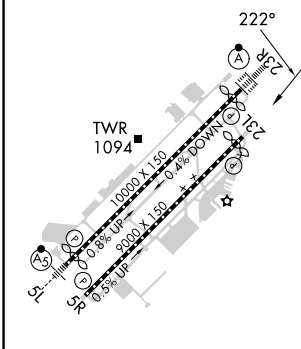
MC GHEE TYSON (T'YS)

**⚠** MISSED APPROACH: Climb to 3000 via VVX R-231 to GROSS INT/29.1 DME and hold.

ATIS <b>128.35</b>	KNOXVILLE APP CON <b>123.9 360.8</b>	KNOXVILLE TOWER <b>121.2 257.8</b>	GND CON <b>121.9 348.6</b>	CLNC DEL <b>121.65</b>
-----------------------	---	---------------------------------------	-------------------------------	---------------------------

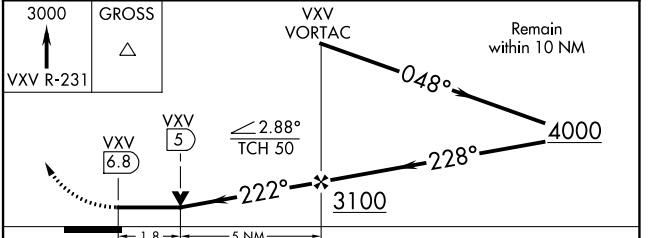
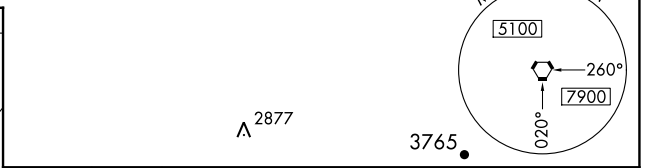


ELEV <b>986</b>	<b>D</b>	TDZE <b>965</b>
-----------------	----------	-----------------



HIRL Rwy 5L-23R and 5R-23L  
REIL Rwy 5R and 23L  
TDZ/CL Rwy 5R and 23R

FAF to MAP 6.8 NM					
Knots	60	90	120	150	180
Min:Sec	6:48	4:32	3:24	2:43	2:16



CATEGORY	A	B	C	D
S-23L	1600-1	635 (700-1)	1600-1¾ 635 (700-1¾)	1600-2 635 (700-2)
<b>C</b> CIRCLING	1600-1 614 (700-1)	1620-1 634 (700-1)	1660-2 674 (700-2)	1900-3 914 (1000-3)

SE-1, 31 OCT 2024 to 28 NOV 2024

SE-1, 31 OCT 2024 to 28 NOV 2024