

LOC/DME I-OXH 110.75 Chan 44 (Y)	APP CRS 231°	Rwy Idg TDZE Apt Elev	8600 965 986
--	------------------------	-----------------------------	---

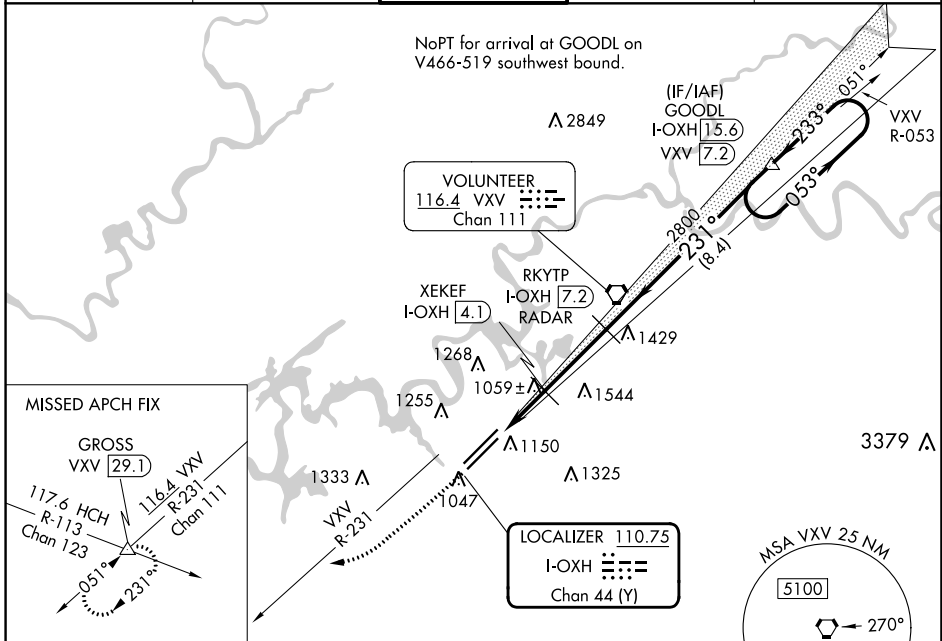
ILS or LOC RWY 23L

MC GHEE TYSON (T'YS)

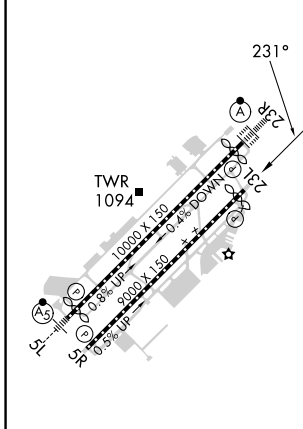
DME or RADAR required.

MISSED APPROACH: Climb to 2000 then climbing right turn to 4000 on heading 240° and VXV VORTAC R-231 to GROSS INT/VXV 29.1 DME and hold.

ATIS 128.35	KNOXVILLE APP CON 123.9 360.8	KNOXVILLE TOWER 121.2 257.8	GND CON 121.9 348.6	CLNC DEL 121.65
-----------------------	---	---------------------------------------	-------------------------------	---------------------------



ELEV 986	D	TDZE 965
-----------------	----------	-----------------



2000	4000	VXV R-231	GROSS	Disregard all marker beacon indications.
↑	hdg 240°	△		GOODL I-OXH (15.6) One Minute Holding Pattern
		RKYTP I-OXH (7.2) RADAR		
		XEKEF I-OXH (4.1)		
		I-OXH (1.6)		
		I-OXH (2.6)		
		2800		
		1800		
		2800		
		053°		
		231°		
		233°		
		3500		
		GS 3.00°		
		TCH 52		
		1 NM		
		1.5		
		3.1 NM		
		8.4 NM		

CATEGORY	A	B	C	D
S-ILS 23L		1165/40	200 (200-3/4)	
S-LOC 23L		1320/55	355 (400-1)	
C CIRCLING	1500-1 514 (600-1)	1620-1 634 (700-1)	1660-2 674 (700-2)	1900-3 914 (1000-3)

HIRL Rws 5L-23R and 5R-23L
REIL Rws 5R and 23L
TDZ/CL Rws 5R and 23R

ILS or LOC RWY 23L

SE-1, 05 SEP 2024 to 03 OCT 2024

SE-1, 05 SEP 2024 to 03 OCT 2024