

HI-VOR or TACAN RWY 23R

VORTAC VXV 116.4 Chan 111	APCH CRS 224°	Rwy ldg TDZE Arpt Elev 9495 984 986
---	-------------------------	---

[USAF]

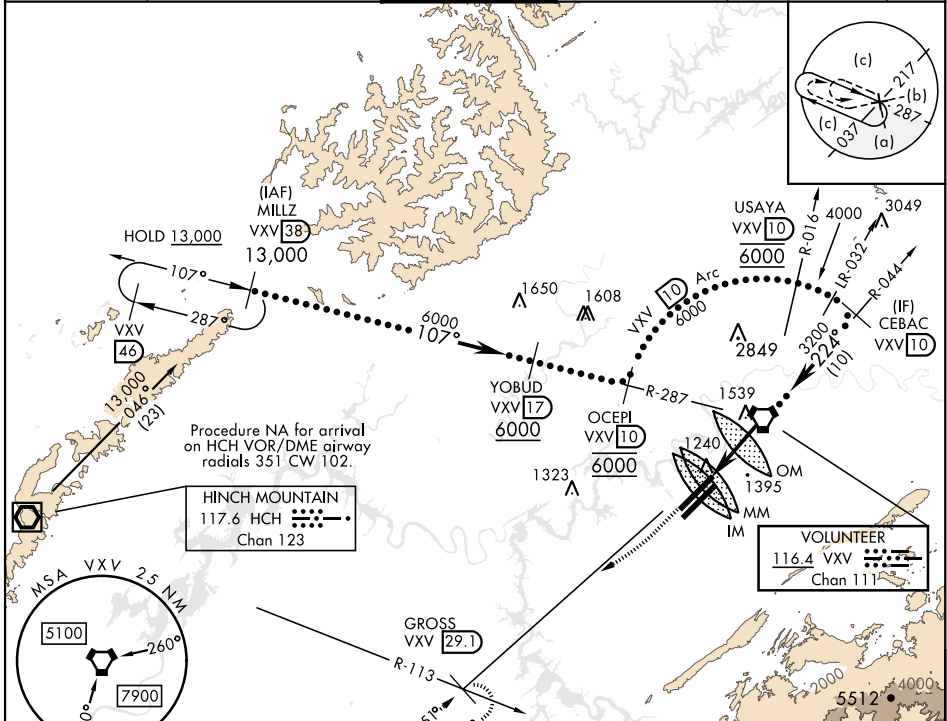
MC GHEE TYSON (KTYS)

DME required
* When ALS inop, increase vis to 1 1/8 miles.



MISSED APPROACH: Climb to 3800 direct on VXV VORTAC R-231 to GROSS/29.1 DME and hold.

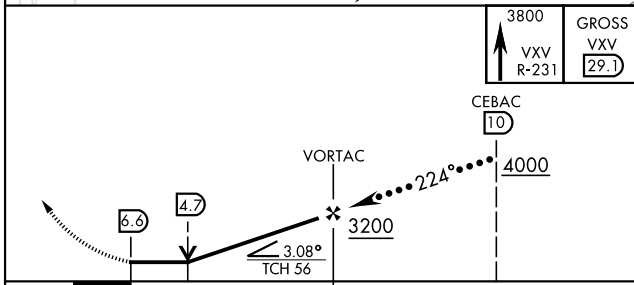
ATIS 128.35	KNOXVILLE APP CON 123.9 360.8	KNOXVILLE TOWER 121.2 257.8	GND CON 121.9 348.6	CLNC DEL 121.65	ASR
-----------------------	---	---------------------------------------	-------------------------------	---------------------------	-----



SE-1, 03 OCT 2024 TO 31 OCT 2024

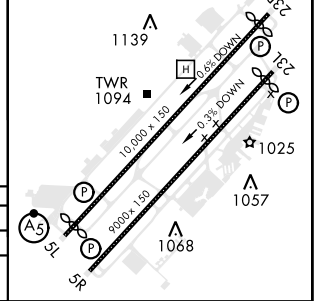
SE-1, 03 OCT 2024 TO 31 OCT 2024

EMERG SAFE ALT 100 NM 8900



ELEV	986	TDZE	984
------	-----	------	-----

Rwy 05L ldg 9508'
Rwy 05R ldg 8600'
Rwy 23L ldg 8600'
Rwy 23R ldg 9495'
HIRL Rwy 5R-23L, 5L-23R
REIL Rwy 5R-23L
TDZL/CL Rwy 5R, 23R



CATEGORY	C	D	E
S-23R*	1640-13/8	656	(700-13/8)
CIRCLING	1660-2	1900-3	
	674 (700-2)	914 (1000-3)	

HI-VOR or TACAN RWY 23R